



HOW TO USE RFVR database



01 1.1 Directly to

- www.seafdec.or.th/rfvr/index.php
- www.seafdec.or.th and select RFVR banner

1.2 Searching via www.google.com



02

Searching for vessel information

such as Vessel Flag, Vessel Type, Registration Number, Vessel Name, IRCS and etc.

For more information:
please contact at
td@seafdec.org



www.seafdec.or.th

TRAINING DEPARTMENT

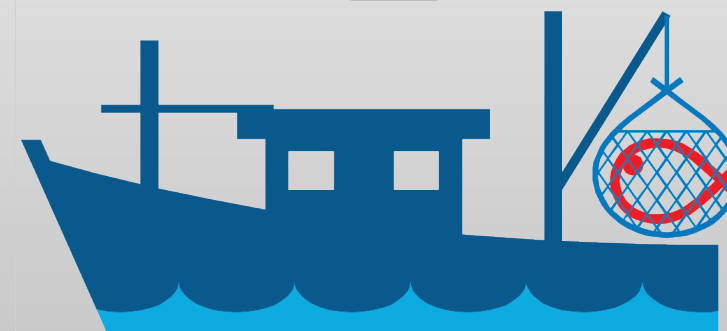
SOUTHEAST ASIAN FISHERIES DEVELOPMENT CENTER



RFVR

Regional Fishing Vessels Record

A primary tool to **REDUCE THE IUU FISHING** in Southeast Asian Region



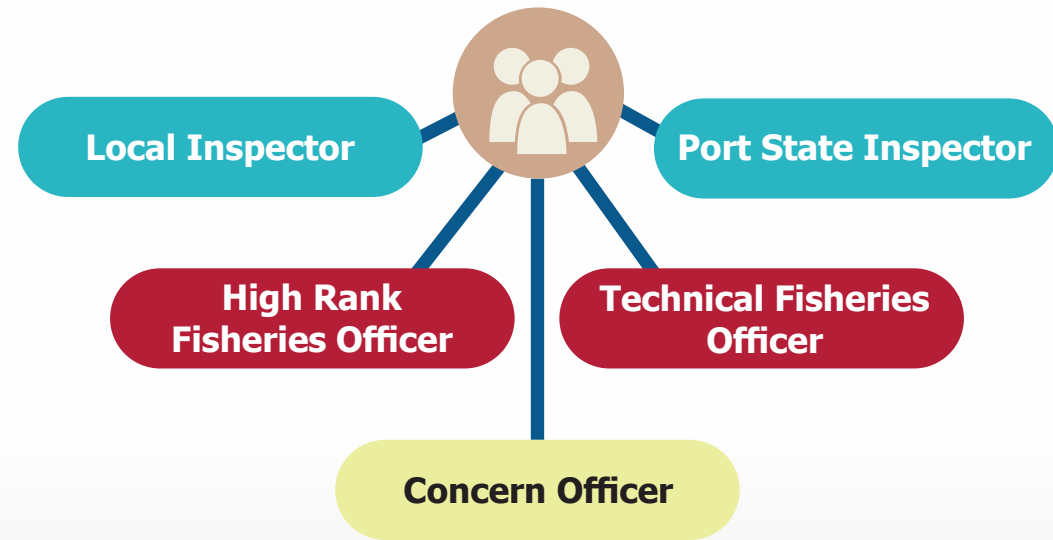
INTRODUCTION

The Regional Fishing Vessels Record (RFVR) Database is an online system collaboratively established by the ASEAN Member States (AMSs) under the ASEAN-SEAFDEC Strategic Partnership (ASSP) mechanism.

The RFVR Database is a basic information required effective tools to support the fishing vessel inspection to reduce the Illegal, Unreported and Unregulated (IUU) fishing vessels. It is expected that RFVR will work as a practical tool for related authorities of the ASEAN Member States (AMSs) in checking and taking corrective actions against inappropriate behavior of its fishing vessels, thereby supporting the elimination of IUU fishing in the Southeast Asian Region.

For example, AMSs can take appropriate actions against “Stateless Vessels, IUU fishing vessels, pouching” by sharing information and identifying problematic vessels through the RFVR database. Moreover, the information in RFVR Database is planned to update time to time by AMSs that means AMSs emphasize to share information on fishing vessels for combat and eliminate IUU fishing in the region.

who is main USERS?



28 KDEs Key Data Elements for RFVR-24m

Name of Vessel	Vessel Registration Number	Owner Name	Type of Fishing Method/Gear
Fishing License Number	Expiration Date of Fishing Licenses	Port of Registry	Gross Tonnage
Length (L)	Breadth (B)	Depth (D)	Engine Power (Kilowatt)
Shipyard/Ship Builder	Date of Launching/ Year of Built/ Year of Purchase	International Radio Call Sign	Engine Brand
Serial Number of Engine	Hull Material	Date of Registration	Area of Fishing Operation
Nationality of Vessel (Flag)	Previous Name	Previous Flag	Name of Captain/Master
Nationality of Captain/Master	Number of Crew	Nationality of Crew	IMO Number

INITIATIVE of RFVR database

