



Strategies for Trawl Bycatch Management (REBYC-II CTI)  
GCP /RAS/269/GFF

---

Report on the  
**Project Steering Committee Meeting**

Windsor Suites, Bangkok, May 13, 2013

## **1. Introduction**

The REBYC-II CTI project is aiming to contribute to the more sustainable use of fisheries resources and healthier marine ecosystems in the Coral Triangle and Southeast Asia waters by reducing bycatch, discards and fishing impact by trawl fisheries. It is executed by the Southeast Asian Fisheries Development Center (SEAFDEC), based in Bangkok, Thailand, and the governments in the participating countries Indonesia, Papua New Guinea, Philippines, Thailand and Viet Nam in partnership with the private sector and relevant national, regional and international organisations. SEAFDEC is hosting the Regional Facilitation Unit (RFU) to which the PRC is attached. The Food and Agriculture Organization of the United Nations (FAO) is the Global Environment Facility (GEF) agency for the project that will be funded jointly by GEF and the implementing and executing partners. The project is for four years with a total budget including co-financing of USD 11.2 M – the GEF contribution is US\$ 3 M.

Building on the lessons and experiences from REBYC-I and following the “International Guidelines on Bycatch Management and Reduction of Discards”, REBYC-II CTI includes a wide range of stakeholders, comprising national and regional policy makers, fishing and fishmeal industry as well as NGO’s.

The 1<sup>st</sup> Project Steering Committee (PSC) meeting took place at Windsor Suites Hotel in Bangkok, Thailand, on 13 May 2013. The participants are listed in Appendix 1 and the Agenda is included as Appendix 2.

The meeting was hosted by the Thai DOF and chaired by Mr. Manoch Roongratri (Director of the Marine Fisheries Research and Development Bureau) and co-chaired by Mr. Petri Suuronen (FAO Lead Technical Officer of the project).

## **2. Conclusions and recommendations of the PSC Meeting**

The Project Regional Coordinator (PRC) a.i. presented the main elements of the Report (Appendix 3), including progress, status and work plans of the project. Some delays have been caused by among other slow progress with operational arrangements between FAO and the partner countries as well as the unsuccessful negotiations with CIM for co-financing of the Project Regional Coordinator (PRC). The latter issue has caused a budget shortfall of some US\$ 300,000, which in turn has prevented the recruitment of the foreseen full-time PRC.

The bullets below summarize the conclusions and recommendations agreed by the 1<sup>st</sup> PRC Meeting.

#### **Project Regional Coordinator (PRC)**

- Although a fulltime PRC is clearly defined in the Project Document, sustained efforts over the past 1.5 years have been unable to secure a co-financing agreement with CIM. This is considered a major change to the agreed project document and should be mitigated as a matter of priority. The lack of a fulltime coordinator has contributed to the delays experienced in starting up project activities. The proposed 150 days of PRC inputs between June 2013 and April 2014 corresponds to slightly more than 70% of a full time position.
- The proposal is accepted with the reservation that FAO actively seek additional funding for a full-time PRC until end of the project<sup>1</sup>.

#### **Mid-term review (MTR)**

- The PSC considers that the mid-term review, planned for November 2013, would have been more usefully carried out in the first half of 2014. However, as explained by the LTO, this is not possible due to GEF rules.
- The PSC noted that an MTR in 2013 would offer the opportunity for timely advice for the national programmes.
- It is agreed that the TOR for the MTR is drafted and circulated by E-mail for comments and endorsement by PSC members.

#### **Project Implementation Report (PIR)**

- The PSC agrees to the proposal that the PIR is circulated for comments latest in early July 2013. Further, the subsequent approval of the PIR will be agreed via E-mail, before the end of July 2013.

#### **Co-financing**

- The PSC recommends that the project establish standard rates for calculation of co-financing. The rates and calculation may follow the principles established by BOBLME and other GEF projects, but should reflect the project's specific needs.

#### **APFIC Regional Expert Workshop for guidance on trawl management**

- The PSC supports that REBYC-II CTI takes part in this process to establish regional guidance for management of tropical trawl fisheries. The guidance should be based on the International Guidelines on Bycatch Management, and should be complemented by case studies from the region. As explained by the APFIC Secretary, REBYC-II CTI RFU will form part of the workshop steering committee.
- It is expected that REBYC-II CTI National and Regional technical counterparts will participate in this workshop.

#### **Request for IFFO/SFP roundtable meeting on fishmeal**

- The PSC acknowledges that the project partners IFFO and SFP provide critical inputs for the involvement of the private sector, including fishing as well as processing and marketing industry.
- The PSC requests that IFFO/SFP assist in organizing a public/private roundtable meeting in 2013.

---

<sup>1</sup> The TOR for the Project Regional Coordinator is included as Annex 2 in Appendix 3.

**Adoption of project work plan and budget**

- The PSC recommends that GIS training is considered for inclusion in the national work plan, where justified.
- The implementation of the project needs to be speeded up, especially the recruitment of national consultants.
- The work plan and budget as presented at the meeting, and considering above comments, is adopted.

**Next PSC**

- The next PSC could be held back-to-back with the SEAFDEC council meeting, which will take place in Singapore in 2014. However, it was recommended to find out if GEF would object to that the PSC is held in a non-project member country. The advantages would be that senior representatives for the project member countries are already present at the SEAFDEC council meeting.
- As an alternative, if the above fails, Vietnam offered to host the next PSC in Ho Chi Minh City.
- In either case, Vietnam will chair the next PSC meeting.

## Appendix 1. List of Participants



### REBYC-II CTI Project Steering Committee Meeting 13 May 2013, Bangkok, Thailand

.....

#### List of Participants

<b>INDONESIA</b>	
Mr. Ir. Endroyono, SE, MM.	Deputy Director of Fishing Gear Construction and Feasibility Directorate General of Capture Fisheries Ministry of Marine Affairs and Fisheries Jl. Medan Merdeka Timur No. 16 Jakarta 10110, Indonesia Tel: +62 21 351 9070 E-mail : <a href="mailto:endroyono.semm@gmail.com">endroyono.semm@gmail.com</a>
<b>PAPUA NEW GUINEA</b>	
Mr. Leban Gisawa	Inshore Fishery Manager National Fisheries Authority 11th Floor, Deloitte Tower, Port Moresby P.O.Box 2046, Papua New Guinea Tel : +675 309 0444 Fax : +675 320 2061 E-mail: <a href="mailto:lgisawa@fisheries.gov.pg">lgisawa@fisheries.gov.pg</a>
<b>PHILIPPINES</b>	
Mr. Rafael Ramiscal	National Marine Fisheries Development Center Bureau of Fisheries and Aquatic Resources 4/F PCA Bldg Annex, Elliptical Road Diliman 1100, Quezon City Philippines Tel: +632 929 6668 Fax: +632 929 4296

	Cell phone: +632 91 9269 3757 E-mail: rv_ram55@yahoo.com
<b>THAILAND</b>	
Mr. Manoch Roongratri Director	Marine Fisheries Research and Development Bureau Department of Fisheries 6 <sup>th</sup> Floor Plodprasop bld., Kasetklang Bangkokhen, Chatuchak , Bangkok Tel: +662-5620542 Fax: 662-5620542 E-mail: <a href="mailto:manochroo@yahoo.com">manochroo@yahoo.com</a>
<b>VIETNAM</b>	
Mr. Nguyen Viet Manh Director	International cooperation Department Fisheries Administration of Vietnam 10 Nguyen Coong Hoan Badinh-Hanoi, Vietnam Tel: +84-4 37345120 E-mail: manhnv.htqt@mard.gov.vn
<b>FAO/RAP</b>	
Dr. Simon Funge-Smith Senior Fisheries Officer	FAO Regional Office for Asia and Pacific (FAO/RAP) Maliwan Mansion, 39 Phra Athit Road Bangkok 10200 Thailand Tel: +66 2697 4149 Fax: +66 2697 4445 E-mail: <a href="mailto:simon.fungesmith@fao.org">simon.fungesmith@fao.org</a>
Mr. Liao Chongguang	FAO Regional Office for Asia and Pacific (FAO/RAP) Maliwan Mansion, 39 Phra Athit Road Bangkok 10200 Thailand Tel: +66 2697 4149 Fax: +66 2697 4445 E-mail: <a href="mailto:Liao.Chongguang@fao.org">Liao.Chongguang@fao.org</a>
<b>FAO/HQ</b>	
Mr. Petri Suuronen Lead Technical Officer	Fishing Operations and Technology Service (FIRO) Resources Use and Conservation Division Fisheries and Aquaculture Department Food and Agriculture Organization of the United Nations Viale delle Terme di Caracalla 00153 Rome, Italy Tel: +39 06 5705 5153 Fax: +39 06 5705 5188 E-mail: <a href="mailto:Petri.Suuronen@fao.org">Petri.Suuronen@fao.org</a>

<b>RFU</b>	
Dr. Niklas S. Mattson Project Regional Coordinator, a.i	Tarravägen 7, 269 42 Båstad, Sweden Cell phone: +668 6326 6914 E-mail: <a href="mailto:niklas.mattson@gmail.com">niklas.mattson@gmail.com</a>
Mr. Isara Chanrachkij Fishing Technology Section Head/Project Technical Advisor	Capture Fishery Technology Division Training Department Southeast Asian Fisheries Development Center P.O.Box 97 Phra Samut Chedi Post Office Samut Prakan 10290, Thailand Tel: +66 2425 6211 Fax: +66 2425 6110 or +66 2425 6111 Cell phone: +668 3614 5581 E-mail: <a href="mailto:isara@seafdec.org">isara@seafdec.org</a>
<b>SEAFDEC</b>	
Dr. Chumnarn Pongsri Chief of Training Department And Secretary - General	Training Department Southeast Asian Fisheries Development Center P.O.Box 97 Phra Samut Chedi Post Office Samut Prakan 10290, Thailand Tel: +66 2425 6100 Fax: +66 2425 6110 or +66 2425 6111 E-mail: <a href="mailto:sg@seafdec.org">sg@seafdec.org</a>
Mr. Bundit Chokesanguan Information and Training Division Head	Information and Training Division Training Department Southeast Asian Fisheries Development Center P.O.Box 97 Phra Samut Chedi Post Office Samut Prakan 10290 Thailand Tel: +66 2425 6116 Fax: +66 2425 6110 or +66 2425 6111 E-mail: <a href="mailto:bundit@seafdec.org">bundit@seafdec.org</a>
Dr. Somboon Siriraksophon Policy and Program Coordinator	SEAFDEC Secretariat P. O. Box 1046, Kasetsart Post Office Bangkok, Thailand Tel: +66 2 9406326 Fax: +66 2 9406336 E-mail: <a href="mailto:somboon@seafdec.org">somboon@seafdec.org</a>
<b>Observers</b>	
Mr. Imron Rosyidi, S.Pi.	Staff of Directorate Fishing Vessel and Fishing Gear Directorate General of Capture Fisheries Ministry of Marine Affairs and Fisheries Jl. Medan Merdeka Timur No. 16

	Jakarta 10110, Indonesia Tel: +62 21 352 0726/8935 E-mail : r_impong@yahoo
Mr. Ian Liviko	Fisheries Management Unit (Lobster/Prawns) National Fisheries Authority Papua New Guinea Tel: +675 306 0444 Fax: +675 320 2061 E-mail: iliviko@fisheries.gov.pg
Ms. Myrna Ramos	Bureau of Fisheries and Aquatic Resources Capture Fisheries Division 4th Floor PCA Annex Building Elliptical Road, Diliman, Quezon City Tel. +632-929-4296 E-mail: cfd53@yahoo.com
Mr. Pham Viet Anh Fisheries Officer	Department of Capture and Fisheries Resource Protection 10 Nguyen Cong Hoan, Hanoi, Vietnam Tel: +844 3771 4238 E-mail: phvietanh2003@yahoo.com
Dr. Mala Supongpan	378 Yak 16 Onnut Suan Loung Village Sukhumvit 77 Bangkok 10250 Thailand Cell phone: +668 5649-9654 E-mail: m.supongpan@gmail.com
Mr. Suchart Sangchan Director	Chumphon Marine Fisheries Research and Development Center 408 Moo 8, Paknam Sub-district, Muang District, Chumphon Province, Thailand Tel: +66 7752 2006, +66 7752 0185 Fax: +66 7752 2006 Cell phone: +668 9872 8771 E-mail: sangchansu@gmail.com
Ms Chintana Nettasna	Researcher, 50/87 M. Sirinda, Rama II Rd., Samaedum, Bangkhunthien, Bangkok, 10150 Thailand
<b>SECRETARIAT of Meeting</b>	
Ms. Sampan Panjarat	Fisheries Biologist, Andaman Sea Fishery Research and Development Center Phuket, 77 Sakdidej Rd., Vichit Sub- District, Muang, Phuket, 83000 Thailand

	E-mail: <a href="mailto:spanjarat@yahoo.com">spanjarat@yahoo.com</a>
Ms. Nathacha Sornvaree Administrative Officer	Capture Fishery Technology Division Training Department Southeast Asian Fisheries Development Center P.O.Box 97 Phra Samut Chedi Post Office Samut Prakan 10290 Tel: +66 2425 6137 Cell phone: +668 1451 4925 E-mail: natha@seafdec.org
Ms. Kanokwan Thobphuk Audio-Visual Assistant	Information and Training Division Training Department Southeast Asian Fisheries Development Center P.O.Box 97 Phra Samut Chedi Post Office Samut Prakan 10290 Thailand Tel: +66 2425 6112 Fax: +66 2425 6110 or +66 2425 6111 E-mail: kanokwan@seafdec.org



## Appendix 2. PSC Agenda



### Strategies for Trawl Bycatch Management (REBYC-II CTI) GCP /RAS/269/GFF

---

#### PROVISIONAL AGENDA **Project Steering Committee Meeting**

Windsor Suites, Bangkok, May 13, 2013

TIME	PROGRAM
08:30-09:00	Registration
09:00-09:30	<b>1. Opening of the meeting</b> <ul style="list-style-type: none"><li>• Opening remarks by the PSC Chair and Co-Chair</li><li>• Adoption of the Agenda</li><li>• Group photograph</li></ul>
09:30-09:45	Coffee break
09:45-12:00	<b>2. Project implementation and status</b> <ul style="list-style-type: none"><li>• Progress and Results (RFU)</li><li>• Review of the proposed work plan, targets, outputs and budget (RFU) <u>Action: Adopt project work plan and budget</u></li><li>• Partner implementation reports – brief verbal updates from PSC members on Project Implementation</li><li>• Discussion</li></ul>
12:00-13:30	Lunch
13:30-15:00	<b>3. Wrap-up and Conclusions</b> <ul style="list-style-type: none"><li>• Any other business</li><li>• Adoption of meeting conclusions <u>Action: Confirm the endorsements and recommendations arising from the meeting</u></li></ul>
15:00-15:15	Coffee break
15:15-16:00	<b>3. Wrap-up and Conclusions (continued)</b> <ul style="list-style-type: none"><li>• Agree on date and location for the next PSC</li><li>• Closure of the meeting</li></ul>
18:00-20:00	Dinner Reception

## Appendix 3. Report to the PSC



Strategies for trawl fisheries bycatch management  
(REBYC-II CTI)

### REPORT TO THE PSC ON THE PERIOD APRIL 2012 TO MAY 2013

Prepared by the RFU

#### Table of Contents

1	Progress and Outputs	3
1.1	Progress with respect to the project targets (as of April 2013)	3
1.2	Events diary - April 2012 – May 2013	5
1.3	Details of completed activities by component	6
1.4	Proposed Work Plan – Targets / Milestones	8
2	Risk Assessment	9
3	Project finances	10
4	Issues for consideration by the Project Steering Committee	11
4.1	Part-time PRC	11
4.2	Project Implementation Report (PIR)	11
4.3	Calculation of co-financing	11
4.4	Mid-Term Review	12
5	List of REBYC-II CTI documents	12
	Annex 1: Project Activities, Year 1	13
	Annex 2. Draft TOR for PRC	20

### Abbreviations and Acronyms

APFIC	Asia-Pacific Fishery Commission
BFAR	Bureau of Fisheries and Aquatic Resources, Philippines
BRD	Bycatch Reduction Device
CIM	Centre for International Migration and Development
CTI	Coral Triangle Initiative
FAO	Food and Agriculture Organization of the United Nations
FIRO	Fishing Operations and Technology Service (FAO)
GEF	Global Environment Facility
GEO	Global Environment Objective
GIZ	Deutsche Gesellschaft für Internationale Zusammenarbeit
ICES	International Council for the Exploration of the Sea
IEC	Information, Education, and Communication (materials)
LOA	Letter of Agreement (a form of FAO Contract)
LTO	Lead Technical Officer
LTU	Lead Technical Unit
MCS	Monitoring, Control and Surveillance
MTR	Mid-Term Review
NPC	National Project Coordinator
NTEP	National Technical Execution Partners
NTO	National Technical Officer
PDO	Project Development Objective
PIR	Project Implementation Report
PRC	Project Regional Coordinator
PRC a.i.	PRC ad interim
PSC	Project Steering Committee
PTA	Project Technical Advisor
PY	Project Year
REBYC-II CTI	Strategies for Trawl Fisheries Bycatch Management
RFU	Regional Facilitation Unit
SEAFDEC	Southeast Asian Fisheries Development Center
SWOT	Strengths, Weaknesses, Opportunities, and Threats
UNDP	United Nations Development Programme

# 1 Progress and Outputs

## 1.1 Progress with respect to the project targets (as of April 2013)

Formally, the project started in November 2011, and hence year one ended in October 2012. However, in practice project activities commenced in late April 2012, and for the purposes of reporting, the effective start-date is interpreted as the end of April 2012. Consequently, the work plan for the coming year (Sections 1.4 and Annex 1) covers the period May 2013 to April 2014.

Progress has been slower than expected, which is partly due to the complexity associated with negotiating and preparing the project funding agreements with the participating countries as well as difficulties in reaching an agreement with CIM on the financing of the Project Regional Coordinator (PRC). In the Project Document it was foreseen that 50% of the PRC post would be paid by CIM while 50% would come from the GEF grant. Meanwhile a part-time consultant has covered the key functions of the PRC.

Of the 15 targets for year one, 5 have been completed, while for 10 targets completion is expected within the next few months (see also section 1.4).

Key:

<b>ok</b>	Completed
<b>(ok)</b>	Completion expected within 3 months
<b>→</b>	Ongoing
<b>⊙</b>	Target expected to be achieved

Note: all the year one targets from the Project Results Framework are reflected below (marked with green) while for subsequent years only selected key targets are included. PY = Project Year.

	PY 1	PY 2	PY 3-4
<b>Global Environment Objective (GEO):</b> Responsible trawl fisheries that result in sustainable fisheries resources and healthy marine ecosystems in the Coral Triangle and Southeast Asian waters by reduced bycatch, discards and fishing impact on biodiversity and the environment			
<b>Project Development Objective (PDO):</b> Effective public and private sector partnership for improved trawl and bycatch management and practices that support fishery dependent incomes and sustainable livelihoods			
Institutional arrangements and processes for public and private sector partnerships are in place and supporting trawl fisheries bycatch management in all project countries. (ongoing)	→	→	→
The role of bycatch in trawl profitability is understood and measures for how to ensure long-term economic sustainability of trawl fisheries are identified and incorporated into trawl fisheries bycatch management plans in all project countries. (ongoing)	→	→	→
Incentives for trawl operators to reduce bycatch are defined and implemented in all project countries and best practices communicated within relevant regional frameworks.	→	→	→
<b>Outcome 1 (Project Component 1):</b> Regional bycatch priorities agreed and bycatch management			

	PY 1	PY 2	PY 3-4
plans for trawl fisheries in project areas are established and supported by appropriate legislation and institutional arrangements for public and private sector collaboration.			
Regional workshop agreeing on intention and work plan	ok		
Draft regional policy/strategy available.	→	→	⊙
Management needs assessment for each fishery/area	(ok)		
Policy, legal and institutional framework reviews complete in all project countries	→	⊙	
Temporary consultative groups for project management and stakeholder preparation set up; Stakeholder analyses and institutional assessments completed for all fisheries/areas	(ok)		
Project partners (countries and SEAFDEC) have agreed on regional bycatch priorities and these have been formally presented to the SEAFDEC membership and other relevant regional organizations.	→	→	⊙
All selected trawl fisheries in project areas are covered by comprehensive trawl fisheries bycatch management plans.	→	→	⊙
Institutional arrangements and processes for public and private sector collaboration on management are in place and the trawl fisheries bycatch management plans have been formally approved by representatives from central and local governments and the private sector/fishers.	→	→	⊙
<b>Outcome 2: (Project Component 2):</b> Management measures, including environmentally friendly fishing gears and practices that reduce bycatch, discards and the impact on biodiversity and the environment, are identified, developed and adapted for project areas. Incentives for trawl operators to reduce bycatch are defined in the project areas			
Potential gear modifications identified and trial/development plan drawn up.	(ok)		
Modified gear introduced to all trawlers through demonstrations and training.	→	→	⊙
Priorities for mapping fishing effort and sensitive areas identified.	(ok)		
Recommendations for spatial-temporal closures agreed by project partners and presented to competent authorities for at least 2 project areas/countries.	→	→	⊙
Existing vessel registry systems reviewed and criteria for registration of project area trawlers defined.	(ok)		
Potential types of incentive packages identified through desk study of other fisheries/regions.	(ok)		
Incentive packages have been identified.	→	→	⊙
Improved management measures are implemented for at least 25% of all trawlers in the project countries.	→	→	⊙
Bycatch of selected fleets reduced by 20% compared to baseline data in year 1 of the project.	→	→	⊙
<b>Output 3 (Project Component 3):</b> Improved data on bycatch and potential fishing ground impact information – collected through standardized methods across all project countries – are available from project areas and inform national/specific area trawl fisheries bycatch management plans. The role of bycatch in trawl profitability is understood and measures identified for how to ensure long-term economic sustainability of trawl fisheries in the project areas.			
TOR for data collection drawn up and standardized methods for all project countries (observer programs, logbook systems, landing site surveys, mapping of fishing grounds) agreed with project partners/ stakeholders	(ok)		
Key indicators identified and baseline data collected from sample trawlers/fishers	→	⊙	
Report on likely impacts based on sample trawler information and including recommendations for continued monitoring.	→	→	⊙
Project website functional	ok		

	PY 1	PY 2	PY 3-4
Initial IEC materials produced and distributed	(ok)		
IEC material based on lessons learnt and project results produced and distributed in the project region	→	→	⊙
Data available for at least 3 indicators and lessons learnt reflected in regional bycatch policy/strategy	→	→	⊙
<b>Outcome 4 (Project Component 4):</b> Private sector/fishers, fisheries managers, local governments and other stakeholders have better knowledge on bycatch issues and participate in developing and implementing national/specific area bycatch management plans.			
Training needs assessment completed (Two Outputs: 4.1 and 4.3)	(ok)		
80 persons trained in each project country. An additional 30 persons have benefited from study tours and participation in project activities	→	→	⊙
20 participants from the project region have been sensitized about trawl fisheries bycatch management and the project	ok		
Trawl fisheries bycatch management plans have been developed in consultation with key stakeholders	→	→	⊙
Higher degree of agreement by fishers to existing regulations.	→	→	⊙
<b>5: Project Management.<sup>2</sup></b>			
LOA with SEAFDEC signed	ok		
RFU established and staffed	ok		
First funding proposals and LOA's with all partner countries signed	(ok)		
Technical and operational support provided to partner countries	→	→	⊙

## 1.2 Events diary - April 2012 – May 2013

2012	
April	
	National Project Coordinators (NPC's) nominated (by April 2012)
30	Private sector roundtable meeting, Bangkok, Thailand
May	
1-4	Project Inception Workshop, Bangkok, Thailand
June	
	Project Regional Coordinator (PRC a.i.) is recruited and Project Technical Advisor (PTA) is nominated
26	Vietnam National Steering Committee meeting
July	
2	Operational and financial meeting with FAO Representative, Hanoi, Vietnam,
3-4	Operational and financial meetings with NPC, Nha Trang, Vietnam
5-6	Operational and financial meetings with BFAR staff and FAO Representative, Manila, Philippines
11-13	Operational and financial meetings with Thai NPC, Chumpon, Thailand
17-19	Operational and financial meetings with NPC at Directorate General of Capture Fisheries, Jakarta, Indonesia
17-19	Operational and financial meeting with FAO Representative, Jakarta, Indonesia
August	
6-10	Operational and financial meetings with NPC and NTO, Port Moresby, Papua New Guinea
6-10	Operational and financial meeting with UNDP Resident Representative, Port Moresby, Papua New Guinea
September	

<sup>2</sup> Project Management is not identified as a separate component in the Project Result Framework and targets are additional

7	LOA with SEAFDEC signed and Project Regional Facilitation Unit (RFU) established and functional. Regional Administrative Assistant seconded by SEAFDEC
17-19	APFIC Consultative Meeting, Da Nang, Vietnam
October	
30	REBYC-II CTI website ( <a href="http://www.rebyc-cti.org">www.rebyc-cti.org</a> ) operational
November	
6-9	Regional Workshop on Work Planning Year I for REBYC-II CTI, Bangkok, Thailand
26-28	SEAFDEC Program Committee Meeting, Chiang Mai, Thailand
December	
	Start of the preparatory work for the regional workshop on data collection.
<b>2013</b>	
January	
	Negotiations with GIZ/CIM finalized (with no positive results)
February	
	LOAs and other financial arrangements with Indonesia, Vietnam and Philippines finalized (ready for signing)
March	
	LOA for Thailand finalized (ready for signing)
13	FAO Task Force Meeting
14-16	LTO and PTA mission to Thailand project site at Chumphon (meetings with the national project team and key stakeholders on data collection procedures and other start-up matters in the project).
19-22	Indonesian REBYC-II CTI project Stakeholder Workshop in West Java (Royal Hotel Bogor). Workshop title " <i>Parameters and indicators of habitats to be expressed in map of trawl fishing gear management in Arafura Sea</i> ".
April	
8-11	LTO, PRC a.i., PTA and Regional Consultant - mission to Vietnam project site at Kien Giang province (meetings with the national project team and key stakeholders on data collection procedures and other start-up matters).
15-18	LTO, PRC a.i., PTA and Regional Consultant - mission to Indonesia project site at Ambon City (meetings with the national project team and key stakeholders on data collection procedures and other start-up matters).
29 Apr – 2 May	LTO - mission to the Philippines project site at Catbalogan (meetings with the national project team and key stakeholders on data collection procedures and other start-up matters).
May	
8	Participation in FAO-ICES "SHRIMP" Mini-Symposium
9-11	Regional Technical Workshop On Data Collection – Trawl Fisheries Management Information And Data Requirements

### 1.3 Details of completed activities by component

**Component 1.** Regional bycatch priorities agreed and bycatch management plans for trawl fisheries in project areas are established and supported by appropriate legislation and institutional arrangements for public and private sector collaboration.

#### Meetings

- Private Sector Roundtable meeting
- Regional Workshop on Work Planning Year 1

#### Outputs

- Report of the GEF/FAO Regional Workshop on Work Planning Year 1 for REBYC-II

<p>CTI. Bangkok, Thailand, 6-9 November 2012.</p> <ul style="list-style-type: none"> <li>• Private Sector Roundtable meeting report (Annexed to Inception Report)</li> </ul>
<p><b>Component 2.</b> Management measures, including environmentally friendly fishing gears and practices that reduce bycatch, discards and the impact on biodiversity and the environment, are identified, developed and adapted for project areas. Incentives for trawl operators to reduce bycatch are defined in the project areas</p>
<p><b>Meetings</b></p> <ul style="list-style-type: none"> <li>• Field missions to Facilitate start-up of Project Activities at Pilot Sites of REBYC-II CTI, Thailand, Viet Nam, Indonesia, Philippines</li> </ul> <p><b>Outputs</b></p> <ul style="list-style-type: none"> <li>• Reports of field missions</li> </ul>
<p><b>Component 3.</b> Improved data on bycatch and potential fishing ground impact information – collected through standardized methods across all project countries – are available from project areas and inform national/specific area trawl fisheries bycatch management plans. The role of bycatch in trawl profitability is understood and measures identified for how to ensure long-term economic sustainability of trawl fisheries in the project areas.</p>
<p><b>Meetings</b></p> <ul style="list-style-type: none"> <li>• Regional Technical Workshop On Data Collection – Trawl Fisheries Management Information And Data Requirements (9-11 May 2013)</li> </ul> <p><b>Outputs</b></p> <ul style="list-style-type: none"> <li>• Website of REBYC-II CTI</li> <li>• REBYC-II CTI Brochure</li> <li>• National Information Materials</li> </ul>
<p><b>Component 4.</b> Private sector/fishers, fisheries managers, local governments and other stakeholders have better knowledge on bycatch issues and participate in developing and implementing national/specific area bycatch management plans.</p>
<p><b>Meetings</b></p> <ul style="list-style-type: none"> <li>• APFIC Consultative Meeting, Da Nang, Vietnam</li> <li>• Thirty-fifth Meeting of the Program Committee Southeast Asian Fisheries Development Center, Chiang Mai, Thailand 26-28 November 2012</li> <li>• ICES-FAO “SHRIMP” Mini-Symposium, Samut Phrakarn, Thailand</li> </ul> <p><b>Outputs</b></p> <ul style="list-style-type: none"> <li>• Presentation by PTA at APFIC Consultative Meeting in Da Nang “REBYC-II CTI: The Way Forward for Trawl Fisheries Management in Southeast Asia and Coral Triangle Region”</li> <li>• Presentation by PTA at SEAFDEC Program Committee Meeting</li> <li>• Presentation by PTA/RFU at ICES-FAO “SHRIMP” Mini-Symposium</li> <li>• Project overview presentations by LTO to NTEP’s and local stakeholders in Indonesia, Philippines, Thailand and Vietnam.</li> </ul>
<p><b>5: Project Management</b></p>
<p><b>Meetings</b></p> <ul style="list-style-type: none"> <li>• Inception Workshop on Strategies for Trawl Fisheries Bycatch Management</li> <li>• Meetings with FAO/UNDP Representatives in partner countries</li> <li>• Meetings with NTEP’s in partner countries</li> </ul> <p><b>Outputs</b></p> <ul style="list-style-type: none"> <li>• Report of the GEF/FAO/SEAFDEC Inception Workshop on Strategies for Trawl Fisheries Bycatch Management</li> <li>• Completed and signed Letters Of Agreement and other financial arrangements for</li> </ul>



all countries, except Papua New Guinea (expected in May/June 2013)

## 1.4 Proposed Work Plan – Targets / Milestones

As part of the Regional Workshop on Work Planning Year 1 (November 2012), each partner country proposed activities for their respective work plans. The full list is presented in Annex 1. The Table below summarises the targets foreseen to be achieved within 12 months from now, and includes the remaining Year 1 targets from Section 1.1. In terms of the project Results Framework, both Year 1 and Year 2 targets are included. The numbering in parenthesis refers to the respective Output in the project's Results Framework.

Main Responsibilities - Key: R=Regional Facilitation Unit, C=Countries, F=FAO

Component/Targets	2013			2014	
	Q2	Q3	Q4	Q1	Q2
<b>Component 1: Policy, legal and institutional frameworks</b>					
Draft <i>priorities</i> for regional policy/strategy (O1.1)					R
Management needs assessment for each fishery/area (O1.2)	C				
Two or more trawl management plans drafted (O1.2)			C		
Policy, legal and institutional framework reviews completed in all project countries (O1.3)			C/R		
Temporary consultative groups for project management and stakeholder preparation set up; Stakeholder analyses and institutional assessments completed for all fisheries/areas (O1.4)	C				
Rules, action plans, membership rules and other institutional definitions drafted for all project fisheries/areas (O1.4)				C	
<b>Component 2: Resource management and fishing operations</b>					
Potential gear modifications identified and trial/development plan drawn up (O2.1)	C/R				
Suitable gear modifications tested and selected (O2.1)					C/R
Priorities for mapping fishing effort and sensitive areas identified (O2.2)	C				
Maps of fishing effort distribution and location of sensitive areas are developed for at least 2 of the project areas/countries (O2.2)				C/R	
Existing vessel registry systems reviewed and criteria for registration of project area trawlers defined (O2.3)		C/R			
50% of all trawlers of selected fleets in project areas included in vessel inventory (O2.3)					C/R
Potential types of incentive packages identified (O2.4)	R				
SWOT analysis for all pilot areas (O2.4)					C
<b>Component 3: Information management</b>					
Regional Technical Workshop On Data Collection Trawl Fisheries Management Information And Data Requirements (O3.1)	R				
Data collected from sample trawlers in at least 3 pilot sites (O3.1)				C	
Monitoring system and data collection processes designed (O3.2)		R/C			
Initial IEC materials produced (O3.4)	R/C				
<b>Component 4: Awareness and Knowledge</b>					
Training Needs Assessment (O4.1, O4.3)	R/C				

Component/Targets	2013			2014	
	Q2	Q3	Q4	Q1	Q2
Training, 20+20 persons in each country (O4.1, O4.3)			R/C		
<b>5: Project Management</b>					
First funding proposals and LOA's with all partner countries signed	R				
Renew LOA between FAO and SEAFDEC		F/R			
Technical and operational (including funding arrangements) support provided to partner countries	R	R	R	R	R

## 2 Risk Assessment

The Risks identified in the Project Document are considered valid. The risk mitigation measures column has been updated to reflect the current assessment of the risks, and the Rating has been increased in one case\*.

Risks (from Project Doc.)	Rating	Risk mitigation measures
<i>Change in key policy and decision makers or other events beyond the control of the project lead to changes in policies and/or support for bycatch management and the project.</i>	<i>M*</i>	<p>The agreement with CIM to co-finance 50% of the Project Regional Coordinator was delayed due to protracted negotiations between FAO and CIM. To mitigate, a part-time, interim PRC was recruited in June 2012. By early 2013 it was evident that an agreement could not be reached, and that the part-time PRC approach need to be continued. In order to optimize the use of the limited budget for the PRC it is proposed to continue with a PRC based in the region, to minimize travel costs and response times. The contract would be initially for a total of 150 days of input over a period of 11 months. Meanwhile, the project and FAO will continue to pursue additional funding for a full-time PRC (See also section 4.1).</p> <p>Recent missions to the countries provided opportunity to exchange updated information on national and regional concerns and policies; the missions have reconfirmed that there is support for the project. The preparation and eventual signing of the Letters of Agreement with three of the countries, and the activity-based funding agreements with two of the countries also serves to ensure support for the project objectives. Through stakeholder participation, local, national and regional ownership will be promoted and maintained during implementation.</p>
<i>There is insufficient capacity to support management changes proposed by the project, e.g. with regard to institutional and administrative support, and MCS and enforcement.</i>	<i>M</i>	Suitable management measures will be agreed based on local needs and capacity. Consensus will be sought on what constitutes feasible levels of management changes, using a co-management approach whenever necessary. Capacity building needs will be assessed and suitable training made available by the project,
<i>Fishers and other private sector actors are reluctant to collaborate with the project.</i>	<i>M</i>	By taking an adaptive co-management approach the project aims to give local stakeholders a say in how the project is implemented. Further, expansion and strengthening of international certification schemes

Risks (from Project Doc.)	Rating	Risk mitigation measures
		provides a strong financial incentive for the private sector to improve trawl fisheries management (e.g. the new EU eco-labelling system for fisheries products, as of 1 January 2015).
<i>Disagreements or conflicts among resource users, different government agencies/ departments – or central-local levels – or other stakeholder groups with regard to project priorities and implementation mechanisms.</i>	<i>L</i>	The risk is real that resource users will disagree on what management measures are possible and/or can achieve resource sustainability. Differing views will be considered and where necessary conflict resolution techniques will be applied. Project implementation will be guided by principles of equitable development and gender equality.
<i>Technical solutions (gear modifications and management measures) are not available that provide the desired environmental and sustainable fishing effects and at the same time are acceptable to fishers and other stakeholders in the context of current livelihoods, food security and poverty.</i>	<i>M</i>	Information on a wide range of management measures is available, including BRD's gear modifications and area-based management. It is expected that co-management approaches will ensure that viable management measures are selected and promoted. The present fishing pressure on the selected pilot areas varies widely, but generally the management options become fewer with increasing fishing pressure, and in these cases it will be necessary to carefully analyze and mitigate possible negative impact on current livelihoods.
<i>Market-based incentives are difficult to identify and implement because of a lack of demand and niche markets for existing products,</i>	<i>M</i>	Market based incentives are on the rise globally, including certification schemes coupled with increasing consumer awareness. In collaboration with partners the project will actively seek to facilitate linkages between markets and improved trawl fisheries management.

### 3 Project finances

The mechanisms for transferring funds to the National Technical Execution Partners vary by country. All countries will receive all or part of the funding administered by the FAO or UNDP Country Office (in particular this applies for the following Budget Codes: 5570 Consultants, 5650 Contracts and 6100 Non-Expendable Equipment). For three of the countries, Philippines, Thailand and Vietnam, the respective NTEP will administer part of the funds using national procedures, i.e. will receive funds into NTEP accounts, and disburse budgeted amounts as per signed Letters of Agreement (LOA's) and in accordance with national audit rules.

Since the LOA's and other arrangements were agreed and signed at different times, the start and end dates of the work plans (and LOA's) do not coincide in time. The current LOA's are valid for 12 months (LOA's can not be more than 18 months). Therefore, work plans and agreements will be renegotiated/ renewed at different times. A disadvantage is that it makes it relatively demanding to keep track of the budget. However, it was not practically feasible to establish the LOA's and work plans for five different partners in parallel. Of the total GEF budget (USD 3 million), USD 1.4 million have been either already spent or allocated into the existing partner work plans (Figure 1). Since the current agreements mostly run until

early 2014, this is considered a balanced use of the funds. As can be seen, the Project Management budget has been slightly overspent, which is related to the failed agreement regarding co-financing for the PRC. A budget revision will need to be carried out to rectify this imbalance, unless additional co-financing can be found.

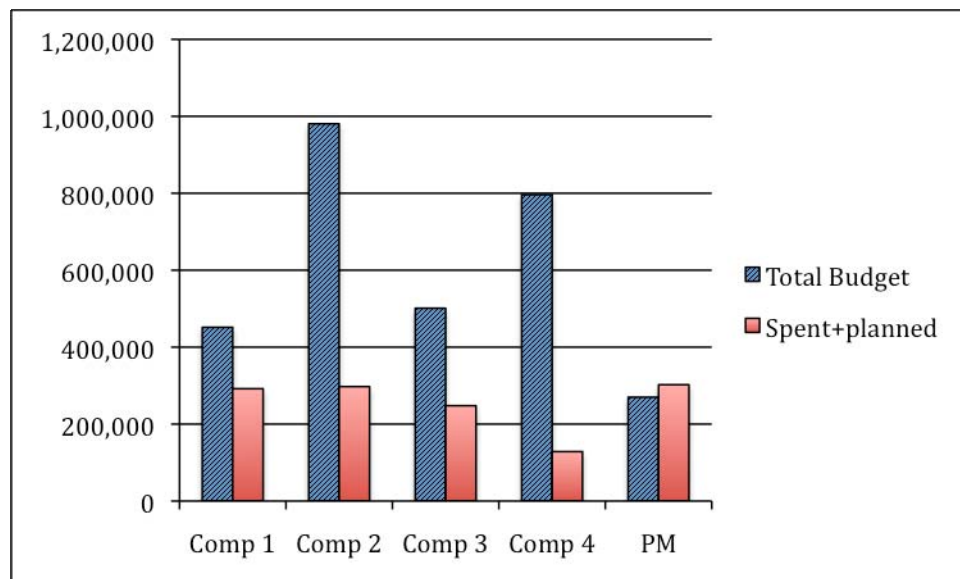


Figure 1. The project budget (in USD) for the four Project Components and Project Management. The red columns represent the sum of the funds that that have already been spent and the funds that form part of the current LOA's and agreements with partners.

## 4 Issues for consideration by the Project Steering Committee

### 4.1 Part-time PRC

To mitigate the lack of coordination until an agreement with CIM regarding cash co-financing of a Project Regional Coordinator was reached, a part-time international consultant coordinator was recruited in June 2012. However, early in 2013 it became clear that the chances of reaching an agreement were close to zero (see also Section 2). The existing GEF budget covers only 50% of the PRC, making a full time PRC, as originally intended, impossible without additional cash co-financing. As an interim solution it is proposed to recruit a part-time consultant based in the region, initially for 150 days over a period of 11 months. The draft TOR is included as Annex 2. Meanwhile the project and FAO will continue to seek additional funding for a full-time coordinator.

### 4.2 Project Implementation Report (PIR)

The first yearly report, or Project Implementation Report (PIR), covering the period 1 July 2012 through 30 June 2013 is due in July 2013 (deadline is 31 July). Since the next PSC meeting is not foreseen before that date, the PSC is asked to approve that the RFU obtains clearance of the report by circulating the draft PIR by E-mail to the respective NTEP. The PIR will be based on the current report but also include and changes and progress until 30 June 2013.

### 4.3 Calculation of co-financing

The PIR (see 4.3, above) will include calculations of the co-financing. Initial work has identified the need to standardize the rates used to calculate co-financing from the participating countries. For comparison the table below is based on standard average rates

for corresponding national staff from another regional GEF project, the Bay of Bengal Large Marine Ecosystem (BOBLME).

Description	Day(s)- /Year*	Rate (US\$)	Compo- nents**	Per Component	
				Daily Rate	1 Year rate
NTO/PTA salary 223 days x \$137	223	137	5	27.40	6,110
NPC/PC salary 10% 223 days x \$164	22.3	164	5	32.80	731
NPC/RAA Secretary 50% 223 days x \$42	111.5	42	5	8.40	937
Overheads for positions (@100%)			5		7,778
Meeting Salary for International		800			
Meeting salary or other people		110			

\*, estimate of actual number of working days in a year

\*\* , the fifth component = project management

The PSC is requested to review and provide general comments on these standard rates as well as the approach. The rates are based on data from BOBLME participating countries, and may hence differ substantially from the average among REBYC-II CTI countries.

For other, non-standard, co-financing (including workshop, trainings, and private sector co-financing such as vessel time) the RFU will request standardized information from all partners. Co-financing may be as cash or in-kind (c.f. the Project Document) and should be incremental, i.e. represent services or goods that would not otherwise have been available for achieving the objectives of the project. For example, the recent trawl survey of the pilot area in the Philippines will be considered as cash co-financing to the project.

At this point it is not possible to determine if the co-financing commitments will be met, but the RFU will collect the relevant information over the next 1-2 months, and all partners will be requested to supply relevant data for this purpose.

#### 4.4 Mid-Term Review

A Mid-Term Review (MTR) of the project will be carried out by the end of 2013. Terms of Reference for this activity is being prepared and will be shared with the PSC members for review and endorsement in due course.

### 5 List of REBYC-II CTI documents

Report of the GEF/FAO/SEAFDEC Inception Workshop on Strategies for Trawl Fisheries Bycatch Management (REBYC II - CTI). Bangkok, Thailand, 1-4 May 2012 (including Industry Round Table meeting).

Report of the GEF/FAO Regional Workshop on Work Planning Year 1 for REBYC-II CTI. Bangkok, Thailand, 6-9 November 2012.

Strategies for trawl fisheries bycatch management: Socio-economic and gender considerations in REBYC II CTI. Working paper prepared by Susana Siar (FAO, FIRO).

Project Progress Report November 2011-June 2012.

Project Progress Report July 2012-December 2012.

## Annex 1: Project Activities, Year 1

The list below comprises the activities agreed by the respective NTEP representatives at the Regional Workshop on Work Planning for Year 1, held in November 2012. Additional detail and timing is available in the workshop report as well as in the respective Letter of Agreement and/or Terms of Agreement. Note that most of these activities have just been started or will be started soon.

(Key: RFU=Regional Facilitation Unit, SEAFDEC; INS=Indonesia; PNG=Papua New Guinea; PHI=Philippines; THA=Thailand; VIE=Vietnam).

Component 1: Policy, legal and institutional frameworks	Notes
<b>Output 1.1: The International Guidelines on Bycatch Management and Reduction of Discards adopted by all five project countries and regional bycatch priorities agreed by project partners and presented in published policy/strategy document.</b>	
<i>Project target year 1: Regional workshop agreeing on intention and work plan.</i>	<i>Completed</i>
RFU 1.1.1: Conduct regional workshop to agree on detailed, consolidated work plan	
INS 1.1.1: Participate in and contribute to Regional Workshop	
PNG 1.1.1: Participation on the regional workshop to develop a regional guidelines on bycatch management and reduction of discards	
PHI 1.1.1: Participate and contribute to Regional Workshop	
THA 1.1.1: Participate and contribute to Regional Workshop.	
VIE 1.1.1: Participation on the regional workshop to develop a regional guidelines on bycatch management and reduction of discards	
<b>Output 1.2: At least 3 national or area specific trawl fisheries bycatch management plans in the project areas agreed by stakeholders and adopted by relevant authorities.</b>	
<i>Project target year 1: Management needs assessment for each fishery/area.</i>	
RFU 1.2.1: Conduct regional WS on management needs for selected fisheries/areas (TWS 1)	
INS 1.2.1: Assessment of management needs/targets [#4 and #5]	
PNG 1.2.1: Desk top study on GOPP fishery including biophysical and socio-economic attributes,	
PNG 1.2.2: Undertake studies/surveys to fill in gaps identified in 1.2.1,	
PNG 1.2.3: Conduct national multi-stakeholder meeting to convey results from activities in 1.2.1 and 1.2.2	
PHI 1.2.1: Establish Technical Working Group (TWG) in the selected pilot project site	
PHI 1.2.2: TWG formulates pilot project implementation plan (that will lead to pilot trawl bycatch management plan) in consultation with stakeholders	
THA1.2.1: Undertake the formulation of trawl fishing gear management measure in project area (Fishing gear selectivities)	
THA1.2.2: Undertake the formulation of trawl fishing ground management measure in project area (Zoning)	
VIE 1.2.1: Conduct a field trips in Kien Giang to gather relevant information and management need assessment	
VIE 1.2.2: Prepare field trip report	
<b>Output 1.3: Legal and regulatory frameworks relevant for trawl fisheries bycatch</b>	

<b>management reviewed and recommendations for adjustments developed with and agreed in principle by the competent national authorities.</b>	
<i>Project target year 1: Policy, legal and institutional framework reviews completed in 2 project countries.</i>	
RFU 1.3.1: Policy, legal and inst. Review in two countries (consultancy)	
INS 1.3.1: Review of policy, legal and institutional framework of Arafura Sea fishery [#6]	
PNG 1.3.1: Undertake policy review to determine if by catch management in GOP requires specific management plan or should it form an integral part of GOP fishery management plan	
PNG 1.3.2: Conduct multi-stakeholder meeting to develop management plan for by catch based on recommendations from 1.3.1	
PNG 1.3.3: Develop monitoring and data collection mechanisms	
PNG 1.3.4: Management Plan revised incorporating results from activities undertaken in year 1 and presented to stakeholders for further consultation and eventual certification.	
PHI 1.3.1: Engagement of National consultant (Comp1)	
PHI 1.3.2: Seminar/-consultation in pilot area (project brief; review status of fisheries current policies / regulations	
THA 1.3.1: Consultancy revised the national existing law and regulation for trawl fisheries	
VIE 1.3.1: Review of legal, policy and institutional frameworks for trawl fisheries management in Vietnam to produce a checklists of compliance shortfalls with international guidelines for bycatch management and reduction of discards of FAO and regional	
VIE 1.3.2: Initial development of national circular for trawl fishery management in Vietnam	
VIE 1.3.3: Circulate the first drafted circular to relevant authorities, fishing industries, and local stakeholders for their consultations	
VIE 1.3.4: Convene a national WS to review and evaluate drafted circular	
<b>Output 1.4: Institutional arrangements (Management Councils) for collaborative trawl fisheries bycatch management established and functioning in accordance with agreed bycatch management plans (output 1.2).</b>	
<i>Project targets year 1:</i>	
<i>Temporary consultative groups for project management and stakeholder participation set up.</i>	<i>Completed</i>
<i>Stakeholder analyses and institutional assessments completed for all fisheries/areas.</i>	<i>Ongoing</i>
RFU 1.4.1: -	
INS 1.4.1: Establish national working groups (NWG) [#1]	
INS 1.4.2: Meeting of NWG to finalize national work plan and budget [#1]	
INS 1.4.3: Establish local project area consultative groups (LCG) for project management and stakeholder participation [#2]	
INS 1.4.4: NWG [or other entity, e.g. LCG or consultant #6] leads/carries out stakeholder analysis and local institutional assessment	
PNG 1.4.1: Establish project management group to oversee the implementation of the project;	
PNG 1.4.2: Undertake stakeholder analysis and institutional assessment to identify composition of possible MAC members	
PNG 1.4.3: Develop TOR for MAC members	
PNG 1.4.4: Formalise MAC representation	
PHI 1.4.1: Orientation/Consultation with National Advisory Group (NAG);	
PHI 1.4.3: Establish consultative groups for stakeholder participation	

PHI 1.4.4: NCs lead/carry out policy/institutional and trawl fisheries review	
THA: 1.4.1: Meeting of stakeholders to establish the Advisory Groups and Steering Committee Members	
VIE 1.4.1: Establish a local/national working group on bycatch mitigation and management	
<b>Component 2: Resource management and fishing operations</b>	
<b>Output 2.1: More selective trawl gear or alternative (e.g. including actions in 2.2 and/or 2.3) fishing practices used by at least half of the trawlers in project areas.</b>	
<i>Project target year 1: Potential gear modifications identified and trial/development work plan drawn up.</i>	
RFU 2.1.1: Conduct regional technical WS on selective trawl gear (TWS 1)	
INS 2.1.1: Identify potential gear modifications [#4, #5, #6; this may also be part of support/advice from RFU]	
INS 2.1.2: Prepare a trial/development plan [#4, #5, #6]	
PNG 2.1.1: Undertake gear selectivity assessment and identify appropriate specifications for GOPPF if required	
PNG 2.1.2: Identify a licensed operator to trial the gear, including trial plan	
PNG 2.1.3: Conduct meetings to seek expert opinion and stakeholder views on the trial result	
PNG 2.1.4: Report and document results to contribute to policy formulation on by catch management	
PHI 2.1.1: Identify potential gear modifications [new; this may also be provided by/through advice from RFU] / alternative fishing gears	
PHI 2.1.2: Prepare a trial/development plan [new]	
THA: 2.1.1: Conduct trawl fishing trial of Mesh size selectivity: Two experiment (Otter board trawl and pair trawl) 4 fishing boats (private sector) will be hired for each experiment. Data collection will be conduct analysis and report.	
THA: 2.1.2: Two Stakeholder consultation workshops: Pre-experiment for announcement and post-experiment for result dissemination	
THA: 2.1.3: Formulation of management plan in process	
VIE 2.1.1: Development and trial the appropriate selective fishing gear types (BRD) to reduce bycatch and juvenile of trawl fisheries for Kien Giang's fishing fleets	
<b>Output 2.2: Selection criteria and recommendations for demarcating fishing zones and areas for spatial-temporal closures are identified in at least 2 project areas/countries.</b>	
<i>Project target year 1: Priorities and methods for seabed, fishing effort and sensitive areas/habitats mapping identified.</i>	
RFU 2.2.1: Conduct regional technical WS on Zonation/fishing areas (TWS 1)	
INS 2.2.1: Identification of priorities for mapping to support management [#4, #5 and #7]	
INS 2.2.2: Mapping of Critical areas [#5 workshop, #7]	
PNG 2.2.1: Undertake annual survey/research in an attempt to review and make recommendations relating to fishing closed area/season (field trip, workshop and mapping)	
PNG 2.2.2: Undertake habitat mapping for GOPPF including and three mile zone	
PNG 2.2.3: Recommendations put forward for consideration during management planning	
PHI 2.2.1: Fish larval survey	
PHI 2.2.2: Critical habitat mapping (coral reef, sea grass, seabed)	
THA 2.2.1: Review existing data related with project area (data: fisheries, economic social environment and etc.)	



THA 2.2.2: Stakeholder consultation (Pre activities of data collection activity for announcement)	
THA 2.2.3: Collecting data strengthened on the recruitment, fish larvae, fishing gear type, catch, Dominant Species, Social economic aspect. Monthly collection (1 year)	
VIE 2.2.1: Investigation of priorities for fishing closed area/season	
VIE 2.2.2: Participate in regional study tour	
<b>Output 2.3: Inventory of selected trawl fleets in project areas drawn up and recommendations for fishing effort and capacity management strategy communicated to competent national authorities.</b>	
<i>Project target year 1: Existing vessel registry systems reviewed and criteria for registration of project areas trawlers defined.</i>	
RFU 2.3.1: Review of existing frameworks for managing fishing capacity (consultancy)	
RFU 2.3.2: Conduct regional technical WS on Vessel registration systems (TWS 1)	
INS 2.3.1: Review of existing vessel registry systems [#4]	
INS 2.3.2: Identify criteria for registration of project area trawlers [#4, #5, #6]	
PNG 2.3.1: Review current VMS registry for all fleets	
PNG 2.3.2: Revise all current license conditions to reflect changes	
PHI 2.3.1: Training of field officers on inventory procedures & registration/licensing, registry/database systems	
PHI 2.3.2: Inventory of trawl fishing fleet in pilot site	
THA 2.3.1: Validate existing data and inventory of trawl fishing fleets in the project areas. (Pilot area of mesh size selectivity experiment: Prachuab Khirikhan and Chumporn Province)	
THA 2.3.1: Validate existing data and inventory for mapping in the project areas. (Pilot area of Zoning: Trat Province)	
VIE 2.3.1: In desk study for development of term of reference for consultant(s)	
VIE 2.3.2: Review of status of trawl fisheries and vessel registration system in Kien Giang Province to recommend effective and sufficient fishing capacity management solutions (this revision is included review of national vessel registration system)	
<b>Output 2.4: Agreement has been reached on any appropriate incentive packages.</b>	
<i>Project target year 1: Potential types of incentive packages identified through desk study of other fisheries/regions.</i>	
RFU 2.4.1: Desk study on incentives packages (consultancy)	
INS 2.4.1: Identify potential incentives packages [#8; study of "other regions" may be primarily a regional activity under RFU responsibility]	
PNG 2.4.1: Undertake further research to assess the feasibility of allowing trawl activities within 3 mile area in an attempt to allow resource owners to utilize bycatch and prawns under formal benefit sharing arrangement	
PNG 2.4.2: As an incentive, trial licenses can be made available for operators to do mid water trawl for finfish outside the management area during prawn closure season as an incentive for installation of bycatch device on trawlers.	
PHI 2.4.1: -	
THA 2.4.1:-	
VIE 2.4.1: -	
<b>Component 3: Information management</b>	
<b>Output 3.1: Data and data collection methods for bycatch, discards and seabed impact in project areas available and published in relevant national and regional information</b>	

<b>systems.</b>	
<i>Project target year 1: TOR for data collection drawn up and standardized methods for all project countries (observer programs, logbook systems, landing site surveys, mapping of fishing grounds) agreed with project partners/ stakeholders.</i>	
RFU 3.1.1: Conduct regional technical WS on Monitoring and data collection methods and key project indicators (TWS 1)	
INS 3.1.1: Participate in regional training/workshop to standardize methodologies (bycatch/biological assessment /surveys including fish larvae)	
INS 3.1.2: Standardize data collection [#9]	
PNG 3.1.1: Review/revise Observer programs to develop protocols/forms for trawl fishery data collection	
PNG 3.1.3: Develop, update and management database for data entry with trawl fishery	
PNG 3.1.4: Review and revise Logbooks, sampling forms/species guides /sampling protocols for data collection in an effort to improve knowledge on bycatch species composition in GOPFF	
PNG 3.1.5: Implement trawl fishery logbook data collection program and develop a database for bycatch monitoring and management in GOP.	
PHI 3.1.1: Coordination with collaborators (local academe, LGUs, BFAR field units, boat operators) and preparation of proposals	
THA 3.1.1: Data collection, analysis, size composition, proportion of catch, bycatch from mesh size expansion (area of data collection in Prachaub Khirikarn and Chumporn province)	
THA 3.1.2: Data collection, analysis, size composition, proportion of catch, bycatch from zonation (area of data collection in Trat province)	
VIE 3.1.1: Develop protocols/forms for trawl fishery data collection	
VIE 3.1.2: Conduct training WS for trawl fishery data collection training	
VIE 3.1.3: Develop, update and management database for data entry with trawl fishery	
VIE 3.1.4: Implement trawl fishery port sampling data collection program in Kien Giang	
VIE 3.1.5: Implement trawl fishery logbook data collection program in Kien Giang	
VIE 3.1.6: Support working facilities for local project staffs	
<b>Output 3.2: System set up for monitoring of bycatch reduction (volume) as a result of modified gear and improved management and its likely impact on incomes (bycatch value).</b>	
<i>Project target year 1: Key indicators identified and baseline data collected from sample trawlers/fishers.</i>	
RFU 3.2.1: -	
INS 3.2.1: Training of enumerators / observers to collect data for indicators identifies in Activity 3.1.2. [#10]	
PNG 3.2.1: Data collectors to be deployed onto sample trawlers/fishers during fishing season.	
PNG 3.2.2: Logbooks and landing data collection	
PHI 3.2.1: Training of enumerators for trawl catch/bycatch landing survey; researchers/divers for critical area mapping & fish larvae	
PHI 3.2.2: Trawl catch & bycatch landing surveys	
THA 3.2.1: conduct field survey activities data analysis and annual report Year1	
VIE 3.2.1: Make a contractual service to develop baseline, indicators for M&E system	
VIE 3.2.2: Conduct field trip to carry out M&E activities (for staffs of NPSC, three staffs x 3 trips)	

VIE 3.2.3: Convene a workshop for evaluation of M&E system (baselines and indicators). This activity will be combined with inception workshop	
<b>Output 3.3: Project website set up in Year 1 and developed into a regional information sharing mechanism for information on trawl fisheries bycatch management by end of project.</b>	
<i>Project target year 1: Website functional.</i>	<i>Completed</i>
RFU 3.3.1: Setup and maintenance of project website	
INS 3.3.1: Develop and maintain national project webpage [#11]	
PNG 3.3.1: Collate and formalize all relevant information such as progress reports etc... to be sent for publishing.	
PNG 3.3.2: As project rolls on, provide updates regularly for uploading on to website	
PHI 3.3.1: Development of national project webpage	
THA 3.1.3: Develop project webpage through the official website of Central Marine Fisheries Development Center (CMDEC)	
VIE 3.3.1: Development of national project webpage	
<b>Output 3.4: Project IEC material available.</b>	
<i>Project target year 1: Initial IEC material produced and distributed.</i>	
RFU 3.4.1: Produce IEC materials	
INS 3.4.1: -	
PNG 3.4.1: All line agencies and stakeholders involved in this exercise. Share project information through mass media and brochures distribution on bycatch management activities	
PHI 3.4.1: Production and distribution of IEC materials (posters, flyers, t-shirts, etc)	
THA 3.4.1: Postpone for the second year (after finalized result of Activities 2.1.2, 2.2.2)	
VIE 3.4.1: Share project information through mass media and brochures distribution on bycatch management activities	
<b>Component 4: Awareness and Knowledge</b>	
<b>Output 4.1: Fishers and other relevant stakeholders (fisheries managers, local government officials, etc) in project areas have improved their knowledge on bycatch, sustainability issues and collaborative management through training, project information and/or participation in project activities.</b>	
<i>Project target year 1: Training needs assessment completed.</i>	
RFU 4.1.1: TNA for fishers and other relevant stakeholders	
INS 4.1.1: Carry out training needs assessment for fishers [#2]	
PNG 4.1.1: Consultative workshop for stakeholders and fishing community, resource owners ( an inception workshop to introduce project's information and enhance awareness of relevant stakeholders in GOP fishery)	
PHI 4.1.1: Consultative meetings of the TWG in pilot project site	
THA 4.1.1: same as Activity 2.1.2	
THA 4.1.2: same as Activity 2.2.3	
VIE 4.1.1: -	
<b>Output 4.2: Regional and national policy and decision-makers have been sensitized with regard to responsible trawl fisheries management through project information and workshops.</b>	
<i>Project target year 1: 20 participants from the project region have been sensitized about trawl fisheries bycatch management and the project</i>	<i>Completed (c.f. presentations at regional events)</i>

RFU 4.1.2: Carry out training on co-management and locally based approaches to responsible fisheries, including selective fishing gears	
INS 4.2.1: Identify national policy and decision makers for sensitization [#1]	
PNG 4.2.1: Combined with 4.1.1	
PHI 4.2.1: Same as Activity 1.4.1	
THA 4.2.1: Same as Activity 1.4.1	
VIE 4.2.1: -	
<b>Output 4.3: Private sector/fisher 'champions', technical officers and extension workers (government and NGOs) have improved their knowledge on BRDs and other management measures through training (250 persons trained).</b>	
<i>Project target year 1: Training needs assessment completed.</i>	
RFU 4.3.1: TNA for Private sector/fisher champions etc	
INS 4.3.1: Carry out training needs assessment [#2]	
PNG 4.3.1: Combined with 4.1.1	
PHI 4.3.1: Training / Seminar on BRDs & other management measures	
THA: 4.3.1: Same as Activity 1.4.1	
THA: 4.3.2: Same as Activity 2.1.2	
THA: 4.3.3: Same as Activity 2.2.3	
VIE: 4.3.1: Convene an inception workshop to introduce project's information and enhance awareness of relevant stakeholders in Kien Giang. (The workshop will be combined with activity 2.3.2)	

## Annex 2. Draft TOR for PRC



### Food and Agriculture organization of the United Nations Terms of Reference

<b>Name:</b>	N.N.		
<b>Job Title:</b>	Project Regional Coordinator (PRC)		
<b>Division/Department:</b>			
<b>Programme/Project Number:</b>	GCP/RAS/269/GFF - Strategies for Trawl Fisheries Bycatch Management (FSP)		
<b>Location:</b>	Bangkok Thailand (130 days) and Home station (20 days), with travel in project countries as required		
<b>Expected Start Date of Assignment:</b>	1 June 2013 – 30 April 2014 (extendable)	<b>Duration:</b>	WAE 150 days in total
<b>Reports to:</b>	P. Suuronen, LTO/FIRO (technical supervision) L. Chongguang, BH/FAO-RAP (operation supervision)	<b>Title:</b>	LTO/FAO-FIRO Field Programme Officer / FAORAP

#### General Description of task(s) and objectives to be achieved

#### ***In support of the implementation of the Strategies for trawl fisheries bycatch management (REBYC-II CTI) project - GCP/RAS/269/GFF***

The PRC will be under the overall guidance of ADG/RR RAP, operational supervision of the Budget Holder (RAPR) and overall Technical Supervision of the LTU (Fishery Industry Officer, FIRO) and receive technical advice from the Senior Fishery Officer (RAP), and work closely with the project team in SEAFDEC (the project's Regional Facilitation Unit, RFU, is hosted at SEAFDEC Training Department).

The REBYC-II CTI project was approved by GEF in July 2011 and signatures of all five participating countries were obtained by January 2012. A regional inception workshop was held on 1-4 May 2012 in Bangkok, Thailand, bringing together all the executing partners (representatives of SEAFDEC and the participating countries: Indonesia, Papua New Guinea, Philippines, Thailand and Vietnam), FAO and other partners. A regional workshop for the detailed planning of the activities in year 1 was conducted 6-9 November 2012 to form the basis for Letters of Agreement (LOA) to be signed between the partner countries and FAO.

The PRC is required to ensure the smooth implementation of the "Strategies for trawl fisheries bycatch management" (REBYC-II CTI) project - GCP/RAS/269/GFF. The agreed activities over the next 11 months include missions to the participating countries to verify and if necessary modify, in close cooperation with the national partners, the selected methods and approaches to ensure that these are implementable and appropriate for achieving and adequately monitor the intended project outcomes. In particular, the PRC will:

#### **1. As the Project Coordinator, work closely with the RFU/SEAFDEC project staff, FAO-RAP and HQ staff, ensuring implementation of project activities guided by the project document.**

- Provide oversight and ensure that all operational aspects and overall implementation of the project are in accordance with FAO and GEF rules and procedures at the regional level;
- Ensure that technical activities implemented in the project are consistent with the Code of Conduct for Responsible Fisheries and related instruments;
- Continue as necessary the monitoring of and assistance to the set-up of necessary project activities and arrangements, including formulation of Letters of Agreements and/or alternative arrangements;
- Assist the project in arranging and maintaining a framework for tracking of budget and project co-financing;

- Follow up the nomination of national working groups, PSC members, NPCs; and others as appropriate;
- Assist in the identification and recruitment project staff and consultants, as required.

**2. Monitor and support the activities and achievement of Outputs as described in the Project Results Framework**

- Facilitate the implementation of the LOA signed between FAO and the implementation partner SEAFDEC and with the partner countries (LoA's or similar);
- Provide backstopping to the preparations and execution of implementation support missions to the countries and as necessary, participate in the missions;
- Provide inputs for the preparations and execution of the 2<sup>nd</sup> project Steering Committee Meeting foreseen to be held in the contract period.
- Review and amend, as required, the revised results framework produced by the inception workshop and other project meetings, taking GEF tracking tool indicators into account;

**3. Support processes for establishing a project monitoring and reporting system**

- In accordance with project document provisions
- Ensure relevant project indicators are included as part of the data collection/compilation processes at regional and national levels
- Prepare FAO 6-monthly reports;
- Prepare the yearly Project Implementation Progress (PIR) Report

**4. Facilitate the project communication component**

- Maintain dialogue on initiatives already taken with regard to project partnerships and initiate other partnerships, as appropriate
- Follow up on the further development of the project website.

**5. Prepare detailed handover report at the end of the assignment, describing activities undertaken, listing actions that need to be taken and providing other recommendations for continued effective project management.**

**Key performance indicators**

- Timely communication with the project team on project progress and issues
- Effective coordination of project activities
- Submission of a comprehensive report by the end of the assignment.

Required Completion Date: **30 April 2014**

WAE 150 days total, comprising:

- 130 days at RFU (including country visits if needed);
- 20 days home based, spread over the contract period

**Required Competencies**

**Academic Qualifications:** University degree in Fishery Science/Marine Biology or related discipline.

**Technical Competencies and Experience Requirements:**

- 10 years of relevant experience in the field of implementation of regional fishery related programmes, including experience in GEF programme development.
- Experience in FAO Regular Programme and field programme.
- Proven ability to provide rapid and quality technical advice and support for development projects in the Asia Pacific Region.
- Proven ability to prepare project management documentation and reports to a high standard.
- Proven experience in FAOs rules and regulations, manual sections and instruments (contracts, LoAs, Grant Agreements etc.) and in their application.
- Ability to establish effective working relationships in a multicultural environment with respect for others.

**Language skills:** excellent writing and communication skills in English are pre-requisites for adequate completion of

these tasks.

**Other:** Experience of working in the Asian region would be desirable.