



**SOUTHEAST ASIAN FISHERIES DEVELOPMENT CENTER  
TRAINING DEPARTMENT**

# M.V. SEAFDEC



**FISHERIES  
TRAINING  
VESSEL**





Naming of M.V. SEAFDEC  
by His Imperial Highness Prince Akishino



H.E. Mr. Hiroaki Fujii, the Ambassador of Japan to Thailand and H.E. Mr. Sawat Suebsaiprom, Deputy Minister of Agriculture, Thailand, attended the welcoming ceremony for the arrival of M.V. SEAFDEC at the Training Department, Southeast Asian Fisheries Development Center.



Launching M.V. SEAFDEC



# PRINCIPAL PARTICULARS

Length over all..... 65.02 m  
 Length between perpendiculars..... 57.00 m  
 Breadth, molded..... 12.00 m  
 Depth to superstructure deck, molded  
 ..... 7.10 m  
 Depth to upper deck, molded..... 4.70 m  
 Draft, molded..... 4.658 m  
 Service speed at 4.50 m draft..... 14.3 knots  
 Maximum sea trial speed (measured)  
 ..... 16.640 knots  
 Deadweight..... 744.42 t  
 Classification..... NK, NS\*, MNS\*,  
 Fisheries Training and Research Vessel  
 Official number..... 35 09 0085 5  
 Call sign..... HSHE  
 Flag..... Kingdom of Thailand  
 Port of registry..... Bangkok, Thailand  
 Gross tonnage..... 1178 t  
 Net tonnage..... 354 t

Total complement..... 63 P  
 Ship operation part..... 33 P  
 Researcher..... 2 P  
 Instructor..... 2 P  
 Trainee..... 26 P  
 Fish hold capacity (bale)..... 145. 38 m<sup>3</sup>  
 Freezing room capacity (grain)..... 20.48 m<sup>3</sup>  
 Freezing ability (brine)..... 20t/day  
 (air blast)..... 1.6t/36h  
 Tank capacity fuel oil..... 428.96 m<sup>3</sup>  
 drink water..... 45.86 m<sup>3</sup>  
 fresh water..... 92.23 m<sup>3</sup>  
 lubricating oil..... 15.92 m<sup>3</sup>  
 Keel laying..... 17<sup>th</sup> July 1992  
 Launching..... 7<sup>th</sup> Dec. 1992  
 Delivery..... 10<sup>th</sup> Feb. 1993  
 Consultant  
 ..... Fishing Boat Association of Japan  
 Builder..... Miho Shipyard Co., Ltd.





## Nautical instrument

Radar JMA-8513.9CA	1 set	JRC
JMA-8613CA	1 set	JRC
GPS navigation system JLR-6000	3 sets	JRC
NOAA (APT) receiving system NPS-1A	1 set	Nippon Hakuyo
Scientific echo sounder FQ-70	1 set	Furuno
Fish finder FCV-140ET	1 set	Furuno
FE-W822S	1 set	Furuno
Doppler sonar current indicator CI-30	1 set	Furuno
Color scanning sonar CSH-20/80	1 set	Furuno
CSH-80	1 set	Furuno
Radio direction finder FD-120/FD-160	2 sets	Furuno
General weather observation system		
FWS-9800-CD	1 set	Nippon Electric
Gyro-compass and auto-pilot		
PR-2502-SP-W13	1 set	Tokimec

## Deck machinery and fishing equipment

Windlass 6.5t x 11m/min	1 set	Uchida Marine
Capstan 3.5t x 13m/min	1 set	Sumitomo Heavy
Hoist 0.9t x 30m/min	1 set	Mitsubishi Electric
Steering gear 8.5tm 65°/28 sec	1 set	Tokimec
Rudder flap rudder	1 set	Kamome
Deck crane 7.7tm	1 set	Hiab
Purse winch 12t x 32m/min	1 set	Uchida Marine
Power block 6t x 70m/min	1 set	Uchida Marine
Line hauler KH-18BF-ET	1 set	Izui Iron Work
Bran reel BA-30-F-3A	1 set	Izui Iron Work
Deep sea pot winch 2.5t x 45m/min	1 set	Uchida Marine
Vertical line reel 50kg x 30m/min	6 sets	Moriyama
Ball roller HB-300	1 set	Uchida Marine
Skiff boat L=9.0 m 400ps	1 set	Miho Shipyard
Work boat L=6.2m 55ps	2 sets	Miho Shipyard

## Observation system

CTD system with 2500 m winch	1 set	SEA Corp.
GEK system RIKEN Type	1 set	Honchigo
Salinometer 3-G	1 set	Tsurumi Seiki
XBT MX-30	1 set	Sippican
Survey computer system	1 set	Sena
Underwater TV camera system	1 set	Kowa
Scientific echo sounder system FQ-70	1 set	Furuno
Oceanographic winch	1 set	Tsurumi Seiki
Depth meter RND-5220	1 set	Rigosha

## Engine room machinery

Main engine		
6N330-UN 2800ps x 620 rpm	1 set	Yanmar Diesel
Reduction gear YX-3500C	1 set	Yanmar Diesel
Generator engine		
M200AL-UN 720ps x 1000 rpm	2 sets	Yanmar Diesel
generator AC385V 600kVA	2 sets	Shinko Electric
Emergency generator engine		
MDG-40 46ps x 1500 rpm	1 set	Mitui
generator AC385V 35kVA	1 set	Taiyo Electric
Bow thruster CPP type	1 set	Kamome Propeller
Hot water boiler KSA-63SW	1 set	Takuma
Refrigerating system R-22	1 set	Nissin Refrigeration
Ref, machine SF-42	2 sets	Mayekawa
Ref, machine motor 75kW	2 sets	Fuji Electric
Marine growth preventing plant		
ND-50up	1 set	Nippon corrosion Engineering
Sewage treatment unit TF-80	1 set	Goko Seisakusho

## Radio equipment

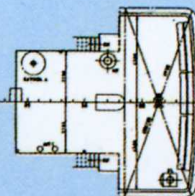
MF/HF radio system JSS-710	1 set	JRC
Transmitter NSD-71		JRC
Receiver NRD-740		JRC
DSC receiver NRD-720		JRC
All wave receiver with scanning unit		
NRD-93, NDH-93	1 set	JRC
VHF radio JHS-31	2 sets	JRC
SSB radio JSB-410A	1 set	JRC
JSB-176	1 set	JRC
Two way VHF radio telephone JHS-7	3 sets	JRC
No.3 VHF radio telephone JHM-202S25	1 set	JRC
DSB radio telephone JHV-1152	5 sets	JRC
CB radio telephone	2 sets	Icom
Inmarsat A JUE-45AM II	1 set	JRC
Inmarsat C JUE-75A	1 set	JRC
Weather facsimile JAX-90	2 sets	JRC
Public addresser NVA-1920	1 set	JRC
NAVTEX receiver NCR-300A	1 set	JRC

## Other equipment

Computer LAN system	1 set	Sena
Monitoring TV camera system	3 sets	Sony



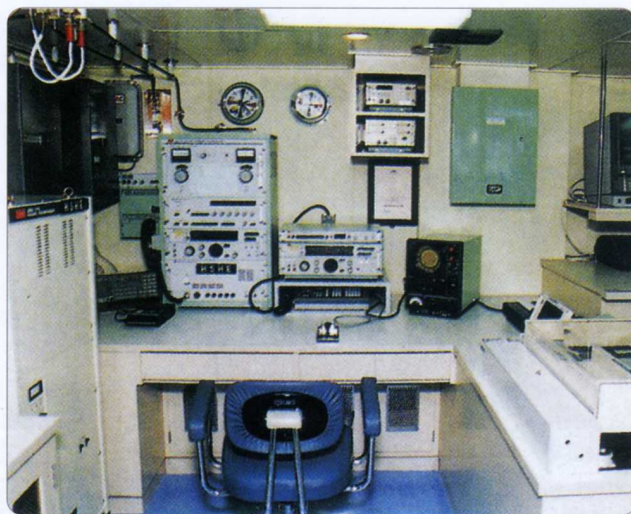
# M.S. SEAFDEC GENERAL ARRANGEMENT



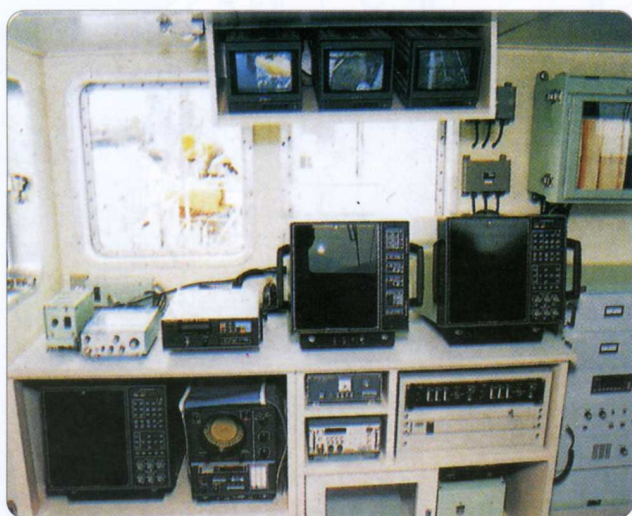




Wheelhouse



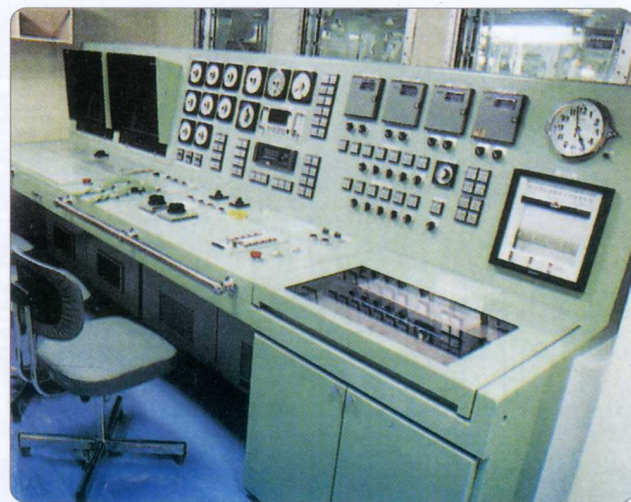
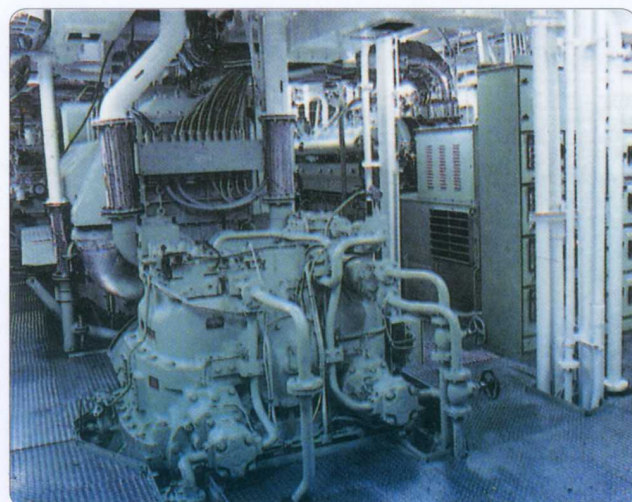
Wheelhouse (Radio space)



Fishing equipments



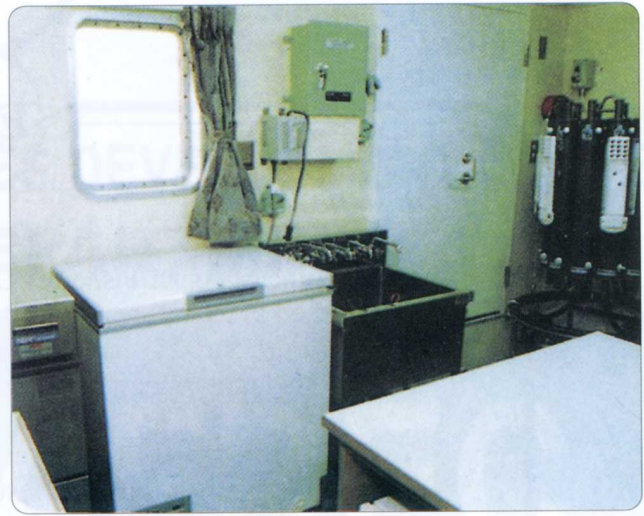
Captain's room







Trainee mess room



Wet laboratory



Saloon



Galley





The Southeast Asian Fisheries Development Center (SEAFDEC) was established as an autonomous intergovernmental body on 28 December 1967, for the purpose of promoting fisheries development in Southeast Asia by mutual cooperation among the Member Countries of the Center.

To fulfill this purpose, the Center's activities cover training and research in marine fisheries, post-harvest technology, aquaculture, marine and inland fishery resources development and management which are respectively conducted at the five departments, namely, the Training Department in Thailand, the Marine Fisheries Research Department in Singapore, the Aquaculture Department in the Philippines, the Marine Fishery Resources Development and Management Department in Malaysia and the Inland Fishery Resources Development and Management Department in Indonesia.

The Secretariat of the Center located in Bangkok, Thailand, serves as the executive arm of the Center. It performs a variety of functions ranging from the implementation of the policies and programmes adopted by the Council, to compiling and disseminating information about the Center.

At present, the Member Countries of the Center are Brunei Darussalam, Cambodia, Indonesia, Japan, Lao PDR, Malaysia, Myanmar, the Philippines, Singapore, Thailand and Viet Nam. Membership of the Center is also open to other Southeast Asian countries.

*For more information, please contact :*

**TRAINING DEPARTMENT**

P.O. Box 97, Phrasamutchedi, Samut Prakan 10290, Thailand

Tel. : (662) 425-6100, Fax. : (662) 425-6110, 425-6111

E-mail : [td@seafdec.or.th](mailto:td@seafdec.or.th)

<http://www.seafdec.or.th>