

# TRAWLED FISHES OF THE SOUTHEAST ASIAN WATERS-II (300 to 1,200m)

Scale bar 20 mm

## CARCHARHINIFORMES



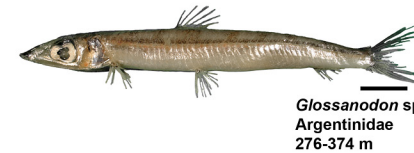
## CENTROPHORIFORMES



## STOMIIFORMES



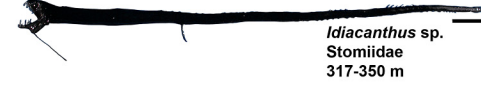
## ARGENTINIFORMES



## DALATIIFORMES



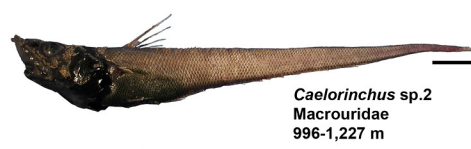
## SQUALIFORMES



## MYXINIFORMES



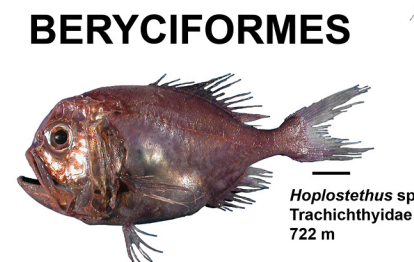
## GADIFORMES



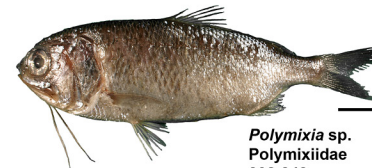
## ALBULIFORMES



## ANGUILLIFORMES



## POLYMIXIIFORMES



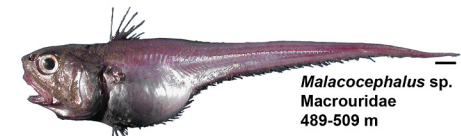
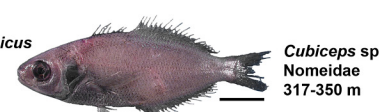
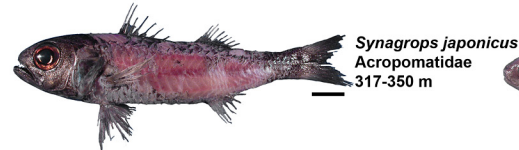
## ATELEPODIFORMES



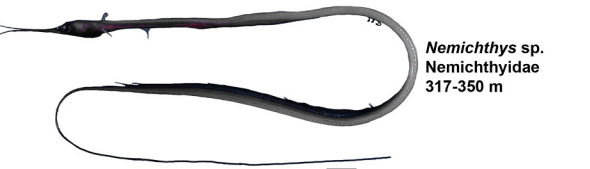
## ZEIFORMES



## PERCIFORMES



## PERCIFORMES



## OPHIDIIFORMES

