



SOUTHEAST ASIAN FISHERIES DEVELOPMENT CENTER  
TRAINING DEPARTMENT

# M.V. SEAFDEC 2





### M.V. SEAFDEC 2



In June 2002, the Government of Japan approved the construction of a Fishery Research and Training Vessel capable of conducting fishery surveys and training operations in coastal ASEAN waters, along with procurement of the requisite fishing gear, fishing machinery, and survey equipment. This was in response to resolutions passed at the ASEAN-SEAFDEC Millennium Conference which highlighted the need for investigation of the potential of fisheries resources, and establishment and implementation of comprehensive policies for innovative fisheries management in the region. The construction of the new vessel, M.V. SEAFDEC 2, was completed in the fall of 2003 and it was officially launched at Niigata, Japan on 6 December 2003.

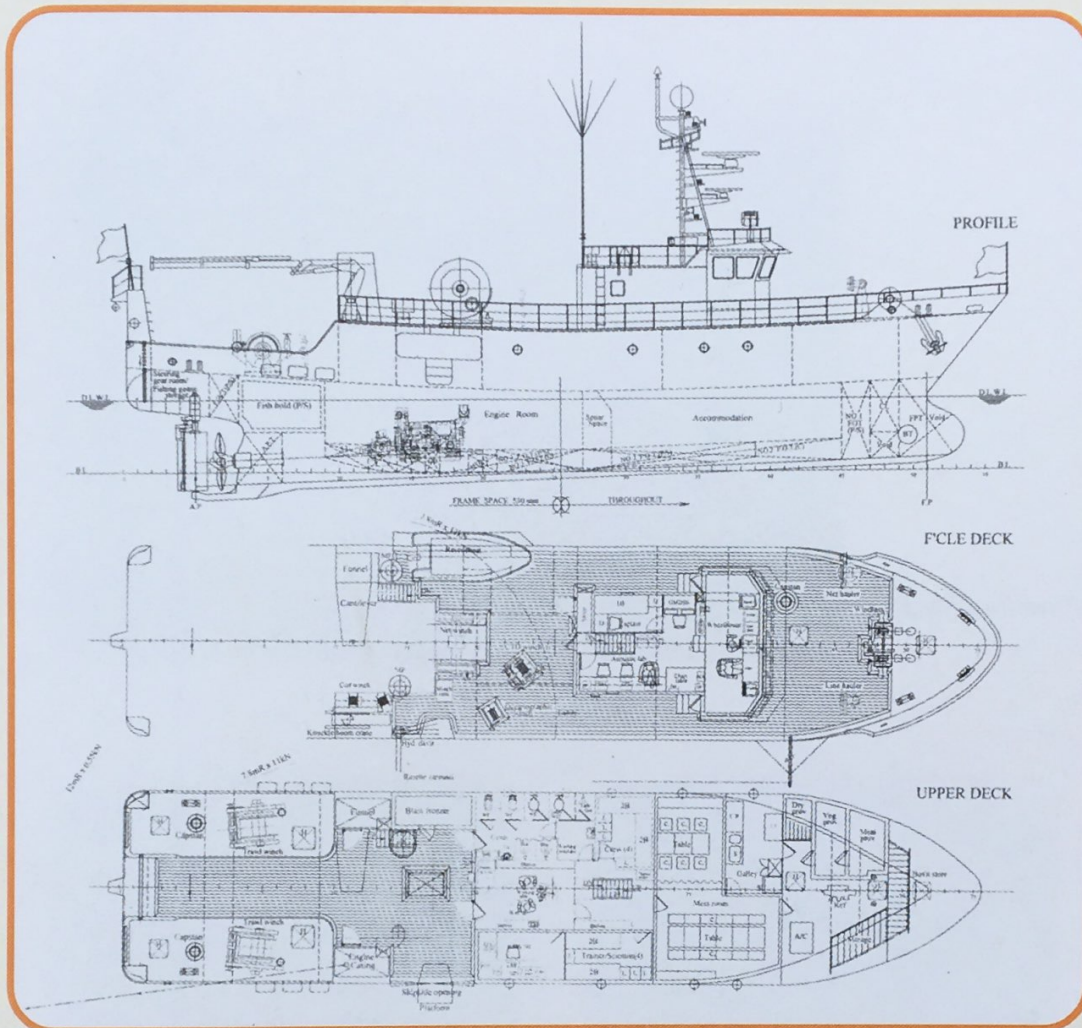
The M.V. SEAFDEC 2 will be used to assess the utilization of fishery resources in grant aid eligible countries (Cambodia, Indonesia, Myanmar, the Philippines, and Vietnam) and other SEAFDEC Member Countries by means of extensive scientific surveys of their coastal resources. The vessel will also be used to implement fishery training programs for resource management and fisheries personnel. In a broader sense, the acquisition of M.V. SEAFDEC 2 will help strengthen technical cooperation and effective fisheries and environmental management in the ASEAN region through the enhancement of research and training capability.

Vessel activities will focus on three specific areas:

1. Fishing Research and Training
2. Oceanographic Surveys
3. On-Board Navigation and Engine Training



# VESSEL LAYOUT



## :::Vessel Specifics:::

Classification	Nippon Kaiji Kyokai (NK) NS* MNS* Fisheries Research and Training Vessel	Capacity	
Flag	Kingdom of Thailand	○ Fish hold	20 m <sup>3</sup>
IMO	9296937	○ Fuel oil tank	55 m <sup>3</sup>
Call sign	HSU	○ Fresh water tank	13 m <sup>3</sup>
Port of registry	Bangkok, Thailand	○ Lubricating oil tank	2.3 m <sup>3</sup>
Overall length	32.5 m	○ Hydraulic oil tank	1.1 m <sup>3</sup>
Length bp	27.0 m	○ Sludge tank	1.0 m <sup>3</sup>
Breadth, molded	7.20 m	○ Drain tank	1.3 m <sup>3</sup>
Depth, molded	3.00 m	Complement	37 persons
Gross tonnage	211 tons (International)	○ Crew	15 persons
Main engine	736 kW x 1 set	○ Instructor/scientist	4 persons
Service speed	12.0 knots	○ Trainee	18 persons



# BRIDGE DECK

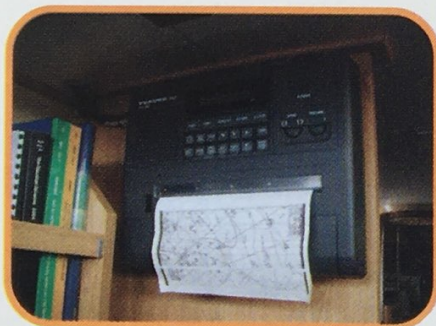
Wheel house ▶



▲ Engine control stand



▲ Weather observation and pelagic longline indicator



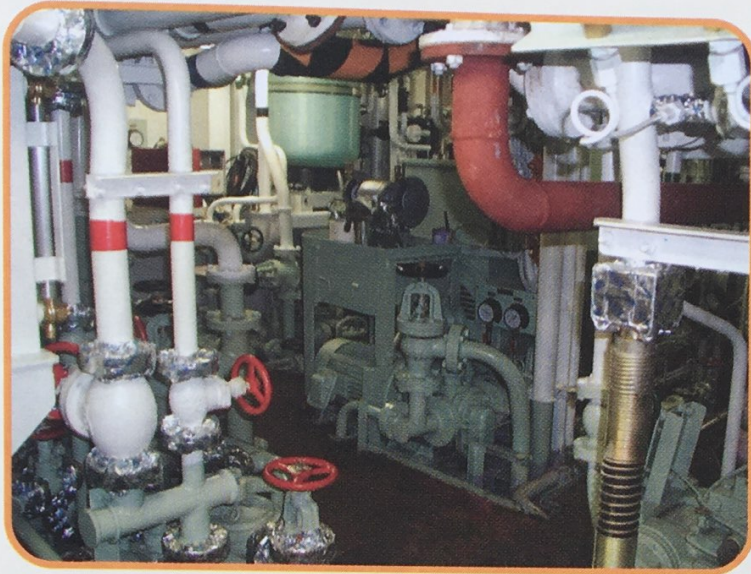
▲ Facsimile



▲ Radio space



# ENGINE ROOM



◀ Engine room



▲ Indicator



▲ Main switch board



▲ Main engine



▲ Engine control console



# FISHING GEARS

## :::Fishing Gears:::

Bottom and pelagic trawl gears  
Bottom and pelagic longline gears  
Deep sea pots

- ⊗ Crab pots (100)
- ⊗ Shrimp pots (100)

Squid jigging machines (4)

- ⊗ Fishing lights
- ⊗ Gears

Drift gillnet and gears



▲ Gill net



▲ Bottom trawl



▲ Squid jigging



▲ Bottom trawl



▲ Pelagic Trawl



▲ Gillnet conveyer



## :::Fisheries Research and Environmental Survey Equipment:::

- CTD system
- Digital XCTD
- Plankton/larvae net
- Water sampler
- Reflectance radiometer
- Reversing thermometers
- Core sampler
- Bottom sampler
- Ship data server
- Echo sounder
- Current observation unit
- Laboratory equipment
- Auto analyzer
- Thermosalinograph
- Fluorometer
- Temperature and depth recorder
- NOAA information receiver
- Seabed mapping sonar
- Onboard computers
- CTD winch
- Oceanographic winch
- Electronic fishing equipment
  - Ⓞ GPS buoys
  - Ⓞ Underwater TV
  - Ⓞ Toripole streamer



▲ Thermosalinograph



▲ CTD system



▲ Mapping sonar



▲ Scientific echo sounder



▲ Bottom sampler





### **What is SEAFDEC ?**

The Southeast Asian Fisheries Development Center (SEAFDEC) is an autonomous intergovernmental body established as a regional treaty organization in 1967 to promote fisheries development in Southeast Asia.

### **Objectives**

SEAFDEC aims specifically to develop fishery potentials in the region through training, research and information services in order to improve food supply through rational utilization of fisheries resources in the region.

### **Membership**

SEAFDEC membership is open to all Southeast Asian Countries. The Member Countries of SEAFDEC at present are Brunei Darussalam, Cambodia, Indonesia, Japan, Laos, Malaysia, Myanmar, the Philippines, Singapore, Thailand and Vietnam.

#### **THE SECRETARIAT**

P.O. Box 1046, Kasetsart Post Office,  
Bangkok 10903,  
Thailand

Tel : (662) 940-6326

Fax : (662) 940-6336

E-mail : [secretariat@seafdec.org](mailto:secretariat@seafdec.org)

Internet : <http://www.seafdec.org>

#### **TRAINING DEPARTMENT (TD)**

P.O. Box 97, Phrasamutchedi,  
Samut Prakan 10290,  
Thailand

Tel : (662) 425-6100

Fax : (662) 425-6110, 425-6111

E-mail : [td@seafdec.org](mailto:td@seafdec.org)

Internet : <http://td.seafdec.org>