



REPORT

FISHERIES REFUGIA INDONESIA
GEOGRAPHIC INFORMATION SYSTEM

JATILUHUR, INDONESIA

Prepared by
**THE AGENCY FOR MARINE AND FISHERIES RESEARCH
AND HUMAN RESOURCES (AMFRHR)**
MINISTRY OF MARINE AFFAIRS AND FISHERIES
REPUBLIC OF INDONESIA

SOUTHEAST ASIAN FISHERIES DEVELOPMENT CENTER
TRAINING DEPARTMENT



**Southeast Asian Fisheries
Development Center**



**United Nations
Environment**



**Global Environment
Facility**

First published in Phrasamutchedi, Samut Prakan, Thailand in September 2022 by the SEAFDEC-UNEP-GEF Fisheries Refugia Project, Training Department of the Southeast Asian Fisheries Development Center

Copyright © 2022, SEAFDEC-UNEP-GEF Fisheries *Refugia* Project

This publication may be reproduced in whole or in part and in any form for educational or nonprofit Purposes without special permission from the copyright holder provided acknowledgement of the source is made. The SEAFDEC-UNEP-GEF Fisheries *Refugia* Project would appreciate receiving a copy of any publication that uses this publication as a source.

No use of this publication may be made for resale or for any other commercial purpose without prior permission in writing from the SEAFDEC Secretary-General at.

Southeast Asian Fisheries Development Center
Training Department
P.O.Box 97, Phrasamutchedi, Samut Prakan, Thailand
Tel: (66) 2 425 6100
Fax: (66) 2 425 6110
<https://fisheries-refugia.org> and
<https://seafdec.or.th>

DISCLAIMER:

The contents of this report do not necessarily reflect the views and policies of the Southeast Asian Fisheries Development Center, the United Nations Environment Programme, and the Global Environment Facility.

For citation purposes this document may be cited as:

AMFRHR/Indonesia, 2022. Establishment and Operation of a Regional System of Fisheries Refugia in the South China Sea and Gulf of Thailand, Indonesian Fisheries Refugia: GEOGRAPHIC INFORMATION SYSTEM. Southeast Asian Fisheries Development Center, Training Department, Samut Prakan, Thailand. FR/REP/ID55, 4 p.

**AGENCY FOR MARINE AND FISHERIES RESEARCH AND HUMAN RESOURCES
MINISTRY OF MARINE AFFAIRS AND FISHERIES
INDONESIA
2022**

Information activities in 2022 of Indonesia fisheries Geographic Information System

Comprehensive studies conducted to identify recommended fisheries refugia areas in Indonesia have been produced for both locations (Bangka Belitung Province and West Kalimantan Province). To enhance public information access, it has been developed a Geographic Information System (GIS) could be accessed through the Indonesian Fisheries Refugia official website (fisheries-refugia-indonesia.org) (Figure 1).

This GIS feature on the Indonesian fisheries refugia website is accessible at <https://fisheries-refugia-indonesia.org/index.php/data>. This URL contained access to both fisheries refugia target sites. To be more specific on one of the targeted sites, the users can access it by clicking on the main tab menu *Peta* (map). This tab will bring the user into two options representing both sites' GIS information (Figure 2). By selecting one of them, the GIS user will be brought to a web window with the GIS interface which has been supplemented by several histograms area (Figure 3).

To access detailed information regarding the areas, the users may click on the area of the certain histogram to show an additional sidebar that informs detailed information about the selected location. The information may provide the local name of the areas based on the local fishermen's knowledge, coordinate the potential fisheries refugia or recommended zonation, as well as existing conservation areas (Figure 4).

Figures



Figure 1. The official fisheries refugia website for Indonesia to access the GIS system

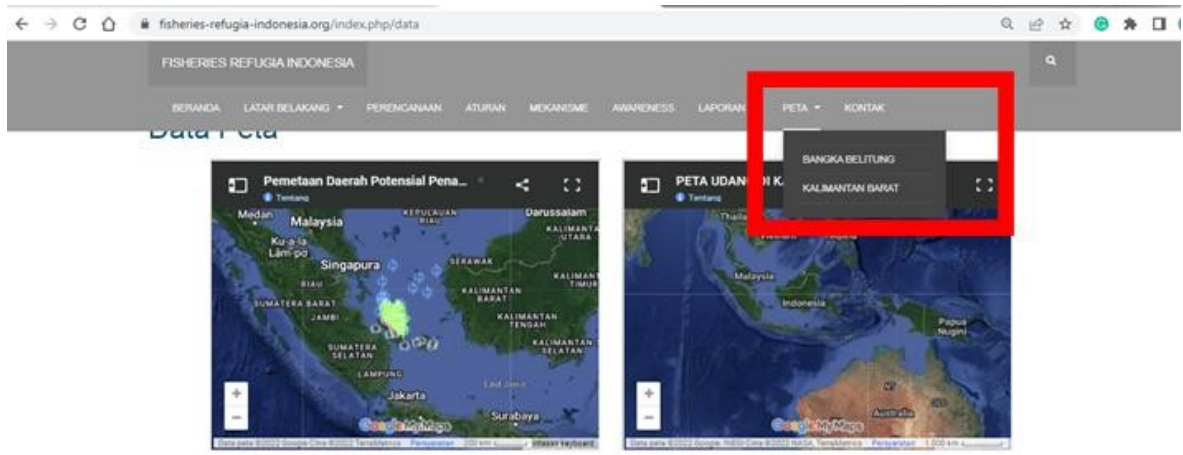


Figure 2. The FrontPage of the GIS system is available online. The detailed information for both refugia sites can be accessed through the tab menu (red square)

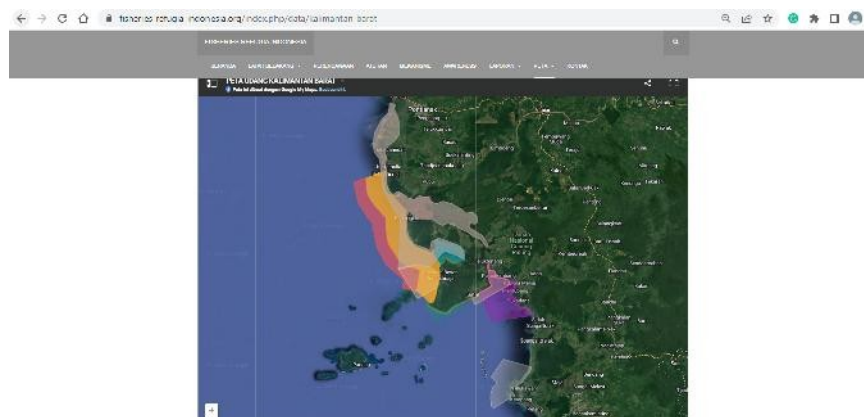


Figure 3. The histogram on the online GIS systems showed several areas representing the recommended fisheries refugia areas.

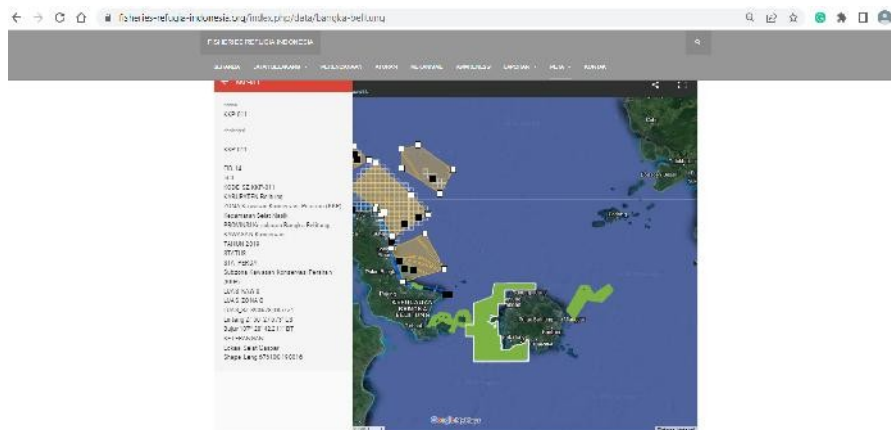


Figure 4. Detail information viewed on the pop-up sidebar will be shown if the users click on a histogram area