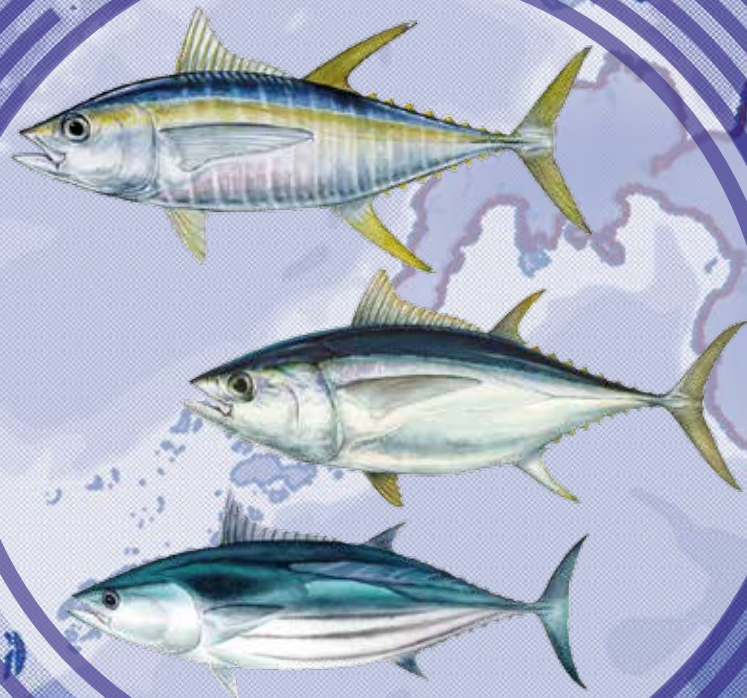


Technical Report on Inventory of Fish Aggregating Devices (FADs)/Payao in Sulu-Sulawesi Seas



Joint Research Program on Tuna Resources in Sulu and Sulawesi Seas

Technical Report

on

**Inventory of
Fish Aggregating Devices (FADs)/*Payao*
in Sulu-Sulawesi Seas**



Southeast Asian Fisheries Development Center

Preparation and Distribution of this Document

This Technical Report on Inventory of Fish Aggregating Devices (FADs)/Payao in Sulu-Sulawesi Seas was prepared by the Training Department of the Southeast Asian Fisheries Development Center (SEAFDEC/TD) in collaboration with the Scientific Working Group of the Joint Research Program on Tuna Resources in Sulu and Sulawesi Seas. This Report is distributed to the SEAFDEC Member Countries and Departments, partner agencies and other fisheries-related organizations, and to the public to make them aware of the activities of SEAFDEC and promote the visibility of the Center.

Bibliographic Citation

SEAFDEC. 2017. Technical Report on Inventory of Fish Aggregating Devices (FADs)/Payao in Sulu-Sulawesi Seas. Southeast Asian Fisheries Development Center/Training Department, Samut Prakan, Thailand. 20 pp.

Notice of Copyright

Reproduction of this publication, in whole or in part, by any method or process, without written permission from the copyright holder is prohibited. Applications for such permission with a statement of the purpose and extent of the reproduction desired should be made in writing to:

SEAFDEC Training Department
P.O. Box 97, Phrasamutchedi
Samut Prakan 10290, Thailand.

All rights reserved

©SEAFDEC 2017

Inventory of Fish Aggregating Devices (FADs)/*Payao* in Sulu-Sulawesi Seas

**Rafael V. Ramiscal, Joeren S. Yleaña, Napoleon Salvador J. Lamarca,
Remar P. Asuncion¹, Asep Priatna², and Sayan Promjinda³**

¹Bureau of Fisheries and Aquatic Resources – Capture Fisheries Division
PCA Compound, Elliptical Road, Diliman, Quezon City, 1101, Philippines

²Research Institute for Marine Fisheries (RIMF), Ministry of Marine Affairs and Fisheries
JLN Muara Baru Ujung, Jakarta, 14440, Indonesia

³Southeast Asian Fisheries Development Center, Training Department (SEAFDEC/TD)
Samut Prakan, 10290, Thailand

Abstract

As part of Joint Research Program on Tuna Resources in Sulu-Sulawesi Sea, an inventory of Fish Aggregating Devices (FADs)/*Payaos* along oceanographic survey track was carried out onboard M.V.SEAFFDEC2 during October to December 2014 and March to May 2015. This is to determine the extent of FADs distribution and density in this sub-region. Using scanning radar and verification using binoculars/telescopes, a total of 510 FADs/*Payaos* were observed and inventoried along survey tracks in the study area. Majority of FADs/*Payaos* are anchored type and made of steel type buoys. Most dense FADs/*Payaos* observation is located outside Sarangani Bay, North of Manado in Indonesia and at about Latitude 4° N Longitude 122° E with mean density of 12-15 *Payaos*/36 sq.NM.

Keywords: *Payao*, Fish Aggregating Devices (FADs), Sulu-Sulawesi Seas

Contents

| | Page |
|---------------------------------------|------|
| Abstract | i |
| List of Figures | iv |
| Introduction..... | 1 |
| Objective | 2 |
| Methodology | 2 |
| Material | 2 |
| Method | 3 |
| Area of the inventory | 4 |
| Data Acquisition and Processing | 4 |
| Results and Discussion | 5 |
| Conclusion | 7 |
| Acknowledgement | 7 |
| References | 8 |
| Appendices..... | 9 |
| Appendix 1 | 9 |
| Appendix 2 | 10 |
| Appendix 3 | 16 |

List of Figures

| | Page |
|--|------|
| Figure 1 Material used in FADs/ <i>Payaos</i> inventory | 2 |
| Figure 2 Process of FADs/ <i>Payaos</i> survey | 3 |
| Figure 3 Location of Sulu and Sulawesi Sea, Oceanographic Stations and Navigation route of M.V.SEAFFDEC2 surveyed in Sulu and Sulawesi Sea | 4 |
| Figure 4 Plotted reference points/center positions of 36 sq. NM Grid. | 4 |
| Figure 5 Plotted FADs/ <i>Payaos</i> . Red dots - 2014 inventory, Yellow dots - 2015 inventory | 5 |
| Figure 6 Three (3) major types of FADs/ <i>Payaos</i> found around Sulu and Sulawesi Sea..... | 5 |
| Figure 7 Color-scaled concentration map of FADs/ <i>Payaos</i> around SSS | 6 |

Inventory of Fish Aggregating Devices (FADs)/*Payao* in Sulu-Sulawesi Seas

**Rafael V. Ramiscal, Joeren S. Yleaña, Napoleon Salvador J. Lamarca,
Remar P. Asuncion¹, Asep Priatna², and Sayan Promjinda³**

¹ Bureau of Fisheries and Aquatic Resources – Capture Fisheries Division
PCA Compound, Elliptical Road, Diliman, Quezon City, 1101, Philippines

² Research Institute for Marine Fisheries (RIMF), Ministry of Marine Affairs and Fisheries
JLN Muara Baru Ujung, Jakarta, 14440, Indonesia

³ Southeast Asian Fisheries Development Center, Training Department (SEAFDEC/TD)
Samut Prakan, 10290, Thailand

Introduction

The **Joint Research Program on Tuna Resources in Sulu-Sulawesi Sea (SSS)** was conducted in year 2014 and 2015. It was supported by Japanese Government through the Japanese Trust Fund program entitles “Offshore Fisheries Resources Exploration in the Southeast Asian Region”. Further, the research activity is one of the priority commitments of the Philippines to the SEAFDEC Council in this sub-regional. The results of the research program will benefit the tuna fishing sector. As agreed by the three participating countries, one of the focus of this research program was to assess the use of Fish Aggregating Devices (FADs) on tuna fisheries in SSS. Thus, this study covers survey of FADs/*Payaos*. In particular, the Sulu-Sulawesi Sea area will be determined of tuna stock status as well as the survey on the use of FADs/*Payaos* in this Sub-Region. The Capture Fisheries Division in coordination with the National Fisheries Research Development Institute (NFRDI), the National Marine Fisheries Development Center (NMFDC) and Training Department of SEAFDEC facilitated smooth implementation of the research survey and other activities as stated under the Program.

Fish Aggregating Devices (FADs) or locally known as *Payao* is considered as one of the most effective fishing technology developed that significantly contributed to the increase on Philippines’ marine fishery production (Dickson and Pastoral, 1995). In the year 1988, some big Filipino commercial fishing companies had seek access in some South Pacific countries thereby deploying *Payaos* in the international waters. Its utilization spread the vast waters in areas of South China Sea, Sulu Sea, Pacific Seaboard, Davao Gulf, Moro Gulf and Celebes Sea. These Waters, particularly the Philippines Waters are important as spawning and nursery grounds from where juveniles start to migrate when they reach about 30 cm fork length (FL) (Aprieto, 1991). Juvenile tunas have found to have associative behavior with the FADs/*Payaos* (Babaran, 2011). Composed of four functional parts, the float, anchor, mooring/anchor line and the attractant or “*Habong*”, its classification is determined by the kind of design and material used in the floating section. It may also be classified as free-floating/drifted or stationary/anchored. Believed to have been gradually developed due to the local experiences/observations of the aggregating tendencies of fishes underneath floating debris, FADs/*Payaos* were utilized from coastal or near shore waters for municipal and sustenance fishing to offshore or deep seas for commercial fisheries. The proliferation on the utilization of FADs/*Payaos* particularly in offshore waters supposed that caused an annual mean growth rate of 70.8% within a ten-year period of 1970 (9,054 metric ton: MT) – 1980 (200,810 MT) and in 1994 it reached to 300,000 MT level (Dickson & Pastoral, 1995; Philippine Fisheries Profile, 1993).

The introduction of FADs/*Payaos* in tuna fishing in early 70s triggered the sudden and rapid tuna fishery development but though still increasing in production until early 80s, it is already unstable due to limited and even lack of management strategies (Dickson and

Natividad, 2000). One of the arising issues on the utilization of the technology is on its contribution on depletion of tuna population because of higher juvenile tuna catches by purse seine in FADs/*Payaos* associated sets compared to other types of set (Anon. 2005 as cited by Babaran. 2005). Thus, this study aims to determine relative concentration extent of distribution of FADs/*Payaos* in the SSS through ocular observation and radar recordings during the collaborative survey using the M.V.SEAFFDEC2 under this research program. This is hoped to provide necessary recommendations for a sound management measure on the use of FADs in this sub-region.

This paper attempts to signify the extent of distribution and density (number/per unit area) of FADs/*Payaos* along the Sulu-Sulawesi Seas. This paper limits only on the number of FADs/*Payaos* observed along cruise track/stations as basis in density calculation in terms of number per unit area.

Objective

Study on the use of FADs/*Payaos* in the Sulu-Sulawesi Seas by

- 1) Study of Distribution and relative dense of FADs/*Payaos* in SSS waters.
- 2) Study of Types of FADs/*Payaos* deployed around the Sulu-Sulawesi Seas

Methodology

Material

The study was conducted onboard M.V.SEAFFDEC2 (Figure 1). M.V.SEAFFDEC2 is a research vessel constructed in Japan and granted to Southeast Asia Countries through of Southeast Asian Fisheries Development Center (SEAFFDEC). She is equipped with the modern oceanographic and fishing equipments, capable of undergoing offshore resource assessment surveys. List of inventory material used in FADs/*Payaos* inventory;

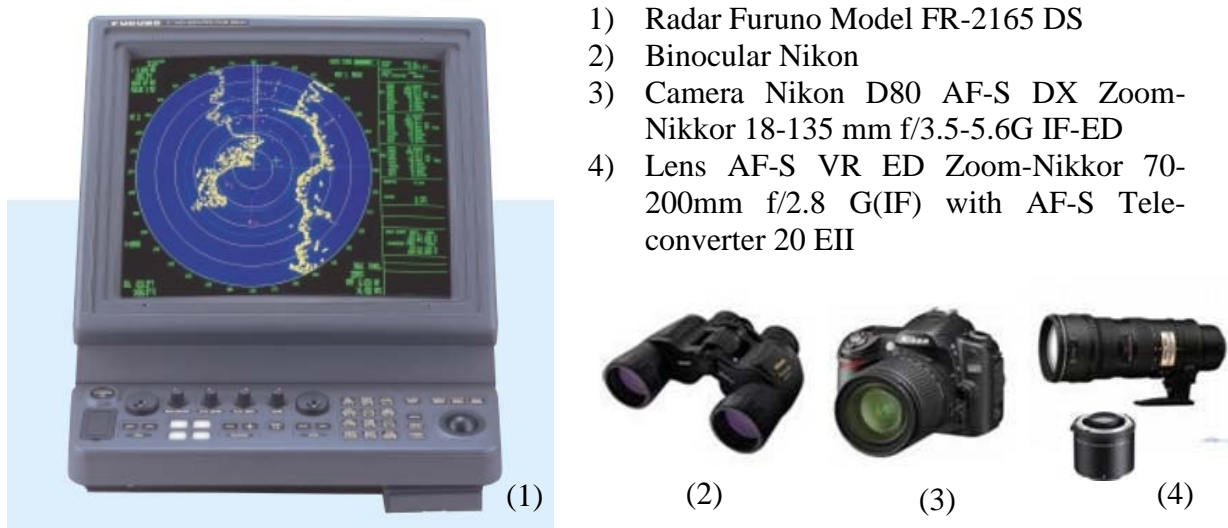


Figure 1 Material used in FADs/*Payaos* inventory

(1) Source: <http://www.furunousa.com> (2)-(4) Photo by Sayan Promjinda

Method

Navigators and duty officers on wheelhouse play the most important role to daily monitor the possibility objects on Radar screen. Determining the relative concentration of FADs/*Payaos* in SSS will be conducted along cruise track using binocular observation (daytime only) and scanning RADAR of M.V.SEAFFDEC2 (Model FR-2165 DS) by following step;

1) The scanning RADAR will be used as the primary tool for the survey and the data recording will be confirm by using binocular.

2) In case of severe weather, the FADs/*Payaos* observation will be confirmed.

3) Log sheet will be provided to record pertinent will be listed such as vessel's position when the FADs/*Payaos* was sited, FADs/*Payaos* relative position to the vessel, its type, associated electronics, etc., and the Inventory of FADs Scanned floating objects were determined whether if boat, FADs/*Payaos* or others and plotted using Plotting Software e.g. MAXSEA software, Google Earth, etc. (Recommended free software)

4) Type of FADs/*Payaos* (man-made FADs: Anchored FADs and Drifting FADs) will be recorded.

5) Visual observation by binoculars will be used to confirm the type of FADs/*Payaos*.

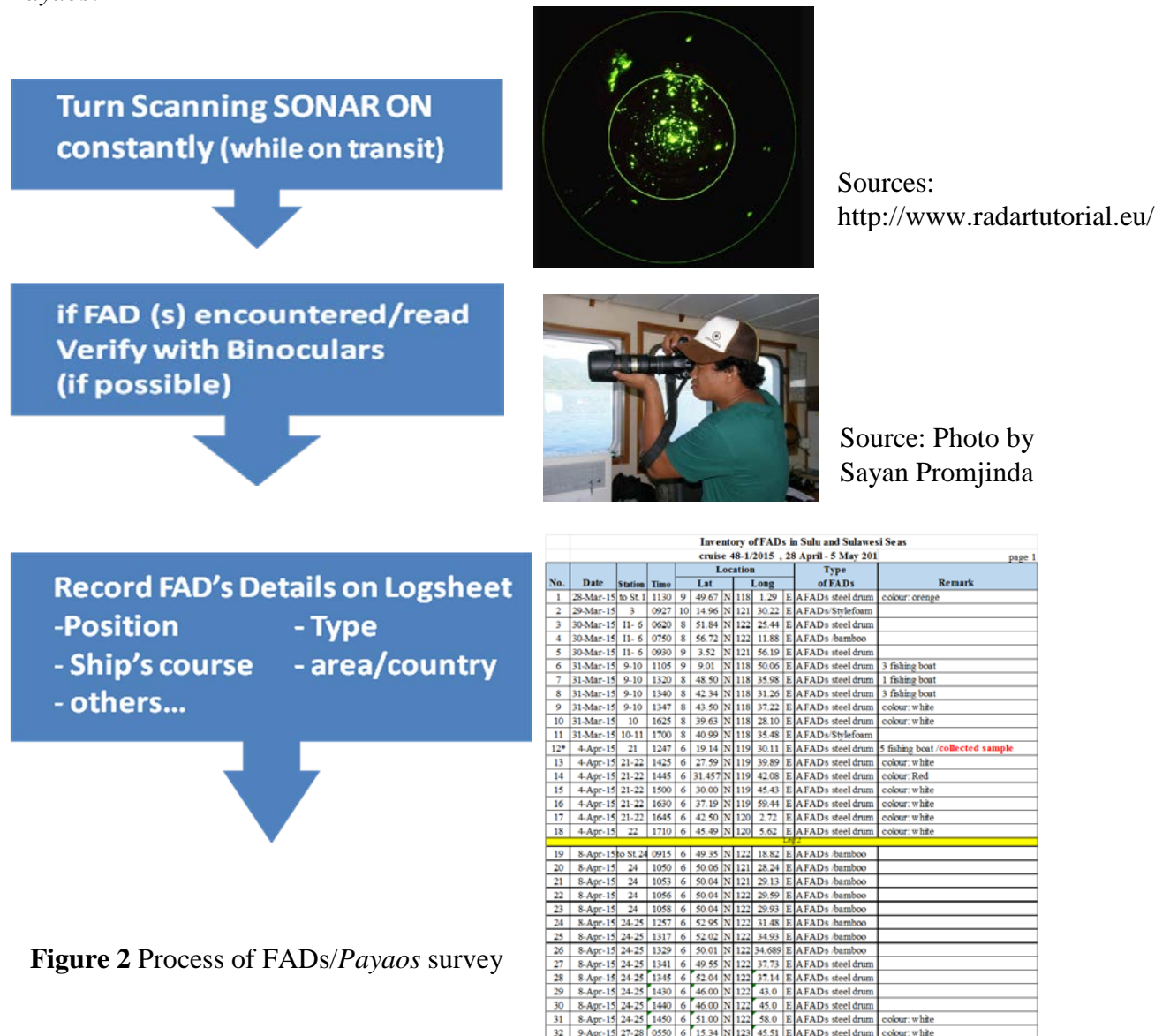


Figure 2 Process of FADs/*Payaos* survey

Area of the inventory

The inventory covered the areas along the oceanographic track/station of Cruise of M.V.SEAFFDEC2 from a period of 25 October to 1 December 2014 and 28 March to 1 May 2015. During Cruise, the Sulu Sea area which was covered by M.V.SEAFFDEC2 is bounded within the coordinates: from Latitude 6.25° N to 10.5° N and Longitude 117.75° E to 122.75° E while Celebes Sea area in bounded by Latitude 1° 05' N to 7° 00' N and Longitude 119.5° E to 125.5° E (Figure 3).



Figure 3 (Up) Location of Sulu and Sulawesi Sea, (Down) Oceanographic Stations and Navigation route of M.V.SEAFFDEC2 surveyed in Sulu and Sulawesi Sea

Data Acquisition and Processing

Inventory of FADs was conducted from one station to another along cruise track using scanning radar (Furuno Model FR-2165 DS). The radar is capable of tracking/scanning at varied radius. Cruise Plan was carefully designed to suit that scanning is only during broad daytime to assure verification using binoculars onboard. A log sheet was provided wherein scanned FADs/Payaos were listed. Other pertinent data such as vessel's position when the FADs/Payaos was sighted, FADs/Payaos relative position to the vessel, its type and date it was sighted were also noted. Scanned floating objects were determined whether if boat, FADs/Payaos or others and plotted using MAXSEA Plotting Software. Duplication of sighted FADs/Payaos during both cruise periods was checked using Google Earth® software (google.com). Plotted FADs/Payaos

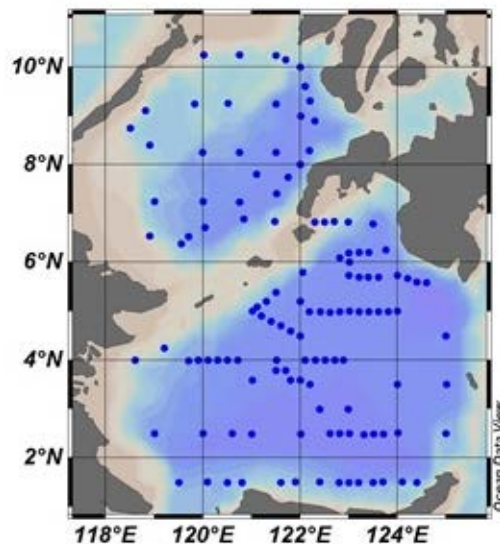


Figure 4 Plotted reference points/center positions of 36 sq. NM Grid.

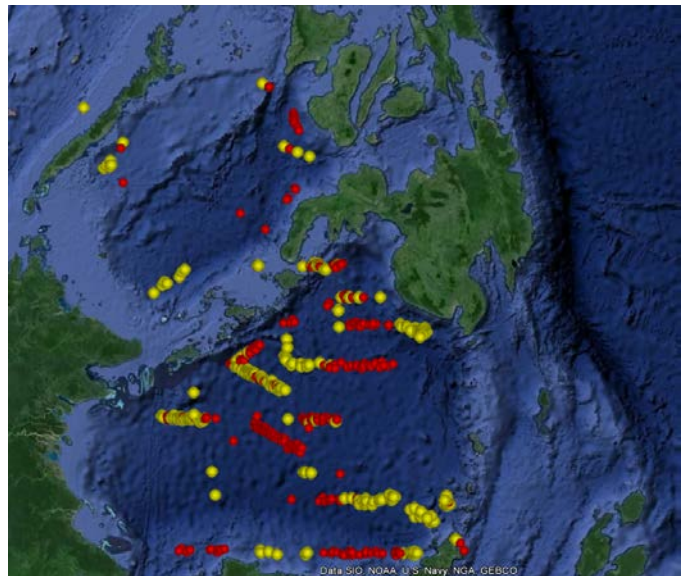
within one nautical mile radius was corrected for duplication.

Accumulated FADs/*Payaos* positions sighted and scanned were plotted using SURFER32 plotting software and Ocean Data View (ODV) Software. ODV plot of FADs/*Payaos* was zoomed up to 36 square nautical miles (NM) (0.1 degree = 6 NM each side) along the Cruise track. The center of each 36 square NM grid was determined of position and number of Payao within it was noted (Figure 4).

Results and Discussion

After two sampling cruises, a total of 510 FADs/*Payaos* were observed and inventoried along the oceanographic track of M.V.SEAFFDEC2. The first cruise was 287 FADs/*Payaos*. The second cruise was 223 FADs/*Payaos*. See Appendix 1 for total list of FADs observed by M.V.SEAFFDEC2.

Figure 5 Plotted FADs/*Payaos*. Red dots - 2014 inventory, Yellow dots – 2015 inventory



All observed FADs/*Payaos* are anchored type which is common in this region. In terms of types, majority or about 87% are of Steel-type buoys followed by Bamboo raft FADs/*Payaos* (6.5%) and some Styrofoam floaters (3%).



Steel-type buoys



Bamboo raft



Styrofoam floaters

Figure 6 Three (3) major types of FADs/*Payaos* found around Sulu and Sulawesi Sea

As observed, FADs/*Payaos* concentration is most at the outer Sarangani Bay, North of Manado in Indonesia and at about Latitude 4° N Longitude 122° E. Average concentration values in these areas was observed from 12-15 FADs/*Payaos* per 36 square NM. In comparison, the Celebes Sea area has denser concentration of FADs/*Payaos* than Sulu Sea. Observed highest concentration in Sulu Sea area is just 3 FADs/*Payaos* per 36 square NM of area while highest value in Celebes sea was at 17 FADs/*Payaos* per 36 Square NM. See Figure 7 for color-scaled concentration map using Ocean Data View (ODV) of FADs/*Payaos* observed during Cruise. Further, calculated mean density throughout the Celebes Sea area is at 4.50 FADs/*Payaos* /36 sq. NM while only 1.1 FADs/*Payaos* per 36 sq. NM in Sulu Sea.

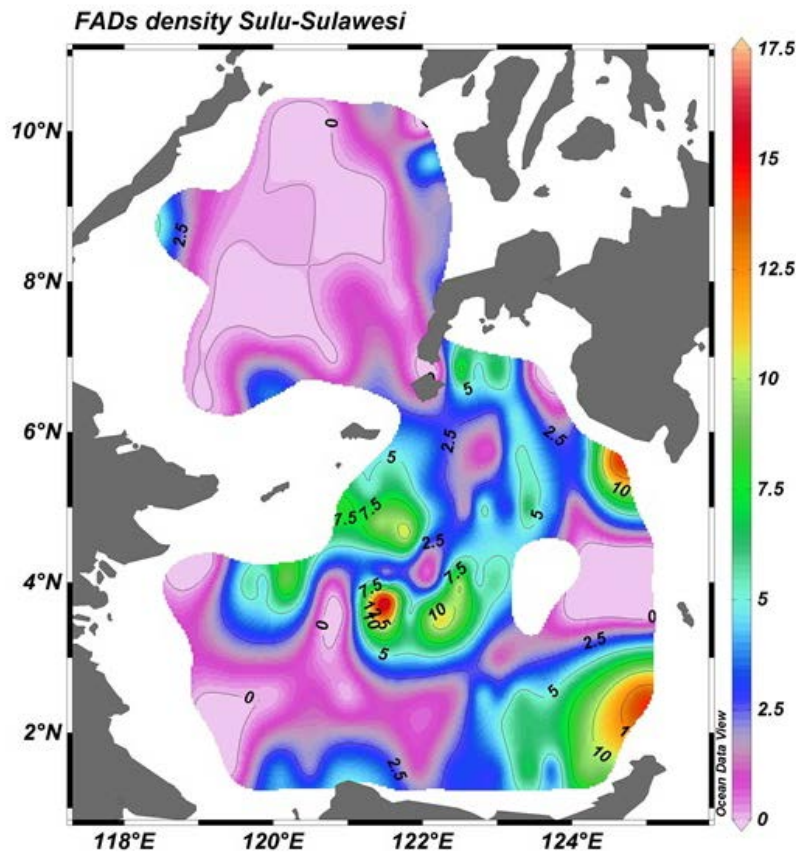


Figure 7 Color-scaled concentration map of FADs/*Payaos* around SSS

Most dense area situated just outside of Sarangani Bay, North of Manado in Indonesia and at about Latitude 4° N Longitude 122° E is possibly due to proximity to ports and other landing areas. Economically and efficiency wise, factors such as location of immediate/nearest fishing area is very vital in fishing proficiency. Dense FADs/*Payaos* concentration is also for the purpose of easy monitoring from poachers and other deliberate destruction. These are some of the conflicts confronting unguarded offshore FADs/*Payaos*. Conflicts also arise on the accidental destruction caused by other fishing methods such as drift gillnets and tuna longlines (Dickson & Pastoral, 1995). In addition, tuna seining fleets in the country deploys FADs/*Payaos* watcher boats to easily monitor their respective FADs/*Payaos* clusters/chain. FADs/*Payaos* density may also suggest good site for fishing thus competition on the right to occupy such areas also arises (Dickson & Pastoral, 1995).

Tagging data results indicated that exploitation of tuna with FADs/*Payaos* is very high in Philippine waters (Primex, 1993 as cited by Dickson & Pastoral, 1995). Further, based on the South Pacific Commission study in Solomon Waters, the probability of skipjack exiting a particular half degree (30 NM) square can be reduced by about half with the presence of about five (5) FADs/*Payaos*. Importance of data on the purpose of deployed FADs/*Payaos* in the study area is also vital to assess different impact by various fishing methods. In catch data presented by Babaran (2006) among three (3) fishing gears (purse seine, ring net and handline) unloading tuna catch in General Santos City Fish Port Complex, indicates that the size range of tuna species captured by ring nets and purse seines is wide and suggests that that these two gears are capturing small sized tuna.

Conclusion

Distribution of FADs/*Payaos* is very much apparent along Celebes Sea area. Most dense Payao observation is located outside Sarangani Bay, North of Manado in Indonesia and at about Latitude 4° N Longitude 122° E is possibly due to proximity to ports and other landing areas with value of 12-15 FADs/*Payaos* per 36 sq NM. Mean Payao density in the entire Celebes Sea area is 4.5 FADs/*Payaos* per 36 sq. N.M. while only about 1.1 in Sulu Sea Area. Majority or about 87% are of Steel-type buoys followed by Bamboo raft FADs/*Payaos* (6.5%) and some Styrofoam floaters (3%) It is supposed that dense distribution along outer Sarangani Bay and near shore areas is due to the proximity of fish landing site and for the purpose of monitoring.

Acknowledgement

Authors would like to express my sincere thanks to the team survey lead by Master of M.V.SEAFFDEC2, Captain Vudhirat Vudthipanyo, all researchers and crews of M.V.SEAFFDEC2, for their invaluable support throughout the cruise survey of this research. Authors would not have achieved this research and this report would not have been completed without all the support that I have always received from the team survey.

In addition, I am grateful for the Japanese Government through Japanese Trust Fund of SEAFFDEC that partly provides funding support and research vessel to the program and survey. Finally, I most gratefully to all Member Countries of Joint Research Program on Tuna Resources in Sulu-Sulawesi Sea (SSS), Sub-Regional Technical Working Group on Fish Aggregating Devices, namely Dr. Alma C. Dickson, Mr. Napoleon Lamarca, Mr. Raja Bidin Raja Hassan, Mr. Lawrence Kissol, and Mr. Mahiswara, and senior staff of SEAFFDEC namely Dr. Chumnarn Pongsri, Mr. Hajime Kawamura and Dr. Worawit Wanchana.

References

- Aprieto VL (1991) Payao Tuna aggregating device in the Philippines. In: Pietersz VLC (ed) Symposium on artificial reefs and fish aggregating devices as tools for the management and enhancement of marine fishery resources. FAO of United Nations, Bangkok, pp 1–15
- Babaran, R. P.; “*Payao* fishing and its impacts to tuna stocks: A preliminary analysis”, - Draft Paper presented to the WCFC Scientific Committee Meeting 2nd Regular Session, Aug. 2006, Manila Philippines; Institute of Marine Fisheries and Oceanography, College of Fisheries and Ocean Sciences, University of the Philippines in the Visayas, Miagao, Iloilo 5023 Philippines.
- Babaran, R.B., Anraku, K., Selorio C. Jr., Endo, C. and Mitsunaga, Y. 2011. Association of early juvenile yellowfin tuna *Thunnus albacares* with a network of payaos in the Philippines. *Fish. Sci.* 78:15–22.
- Bureau of Agriculture Statistics (BAS) Fisheries Statistics
- Dickson, J. O. and Pastoral, P.C.; “Technology Advances in Fish Aggregating Devices for Tuna Fishing with particular reference to *Payao*” – Paper presented to the Tuna Conference Manila, 1995; Bureau of Fisheries and Aquatic Resources – Capture Fisheries Division, PCA Compound, Ellip. Rd., Diliman, Q.C., Philippines.
- Dickson, J. O. and Natividad, A.C.; “Tuna Fishing and a Review of *Payao* in the Philippines”, Bureau of Fisheries and Aquatic Resources – Capture Fisheries Division, PCA Compound, Ellip. Rd., Diliman, Q.C., Philippines.
- SEAFDEC Training Department, 2014, Cruise Report M.V.SEAFDEC2 No.47-3/2014 (TD/RP/181). SEAFDEC Training Department, Samutprakarn, Thailand.
- SEAFDEC Training Department, 2015, Cruise Report M.V.SEAFDEC2 No.48-1/2015 (TD/RP/182). SEAFDEC Training Department, Samutprakarn, Thailand.

Appendix 2 FADs/*Payaos* inventory in Sulu and Sulawesi Seas the second cruise survey in 22 October to 28 November 2014

| No. | Date | Station | Time | Location | | | | | | | Type of FADs | Remark | |
|-------|-----------|---------|------|----------|----|----|------|-----|----|----|--------------|--------------------|------------------------|
| | | | | Lat | | | Long | | | | | | |
| 1 | 26-Oct-14 | 3 | 0740 | # | 15 | 20 | N | 121 | 29 | 30 | E | AFADs/Foam | |
| 2 | 26-Oct-14 | 3 | 1036 | # | 10 | 96 | N | 121 | 38 | 11 | E | AFADs/Plastic drum | distance 0.43 nm/ 190° |
| 3 | 26-Oct-14 | 3 | 1034 | 9 | 10 | 96 | N | 121 | 38 | 11 | E | AFADs/Plastic drum | distance 1.54 nm/ 025° |
| 4 | 26-Oct-14 | 4-5 | 1644 | 9 | 40 | 97 | N | 122 | 06 | 28 | E | AFADs/Foam | |
| 5 | 26-Oct-14 | 4-5 | 1652 | 9 | 38 | 20 | N | 122 | 06 | 70 | E | AFADs/Foam | |
| 6 | 26-Oct-14 | 4-5 | 1700 | 9 | 37 | 40 | N | 122 | 07 | 70 | E | AFADs steel drum | |
| 7 | 26-Oct-14 | 4-5 | 1709 | 9 | 35 | 50 | N | 122 | 06 | 90 | E | AFADs/Foam | |
| 8 | 26-Oct-14 | 4-5 | 1712 | 9 | 33 | 79 | N | 122 | 05 | 90 | E | AFADs/Foam | |
| 9 | 26-Oct-14 | 4-5 | 1718 | 9 | 32 | 04 | N | 122 | 08 | 36 | E | AFADs/unidentified | |
| 10 | 26-Oct-14 | 4-5 | 1730 | 9 | 29 | 00 | N | 122 | 07 | 90 | E | AFADs/unidentified | 3 fishing boat |
| 11 | 26-Oct-14 | 4-5 | 1810 | 9 | 25 | 10 | N | 122 | 11 | 60 | E | AFADs/unidentified | 3 fishing boat |
| 12 | 26-Oct-14 | 4-5 | 1835 | 9 | 21 | 03 | N | 122 | 12 | 99 | E | AFADs/unidentified | 4 fishing boat |
| 13 | 27-Oct-14 | 11-6 | 0635 | 9 | 00 | 43 | N | 122 | 02 | 63 | E | AFADs steel drum | |
| 14 | 28-Oct-14 | 9-10 | 0834 | 9 | 02 | 16 | N | 118 | 47 | 92 | E | AFADs steel drum | colour : orange |
| 15 | 28-Oct-14 | 10-11 | 1548 | 8 | 23 | 20 | N | 118 | 51 | 70 | E | AFADs steel drum | |
| 16 | 29-Oct-14 | 12 | 0611 | 8 | 16 | 27 | N | 122 | 09 | 17 | E | AFADs steel drum | |
| 17 | 29-Oct-14 | 12 | 1616 | 8 | 14 | 90 | N | 122 | 09 | 95 | E | AFADs /bamboo | distance 1.8 nm/ 180° |
| 18 | 29-Oct-14 | 12-15 | 0930 | 8 | 04 | 97 | N | 122 | 01 | 52 | E | AFADs /bamboo | |
| 19 | 29-Oct-14 | 12-15 | 0940 | 8 | 03 | 57 | N | 122 | 00 | 36 | E | AFADs /bamboo | distance 2.0 nm/ 240° |
| 20 | 29-Oct-14 | 12-15 | 1125 | 7 | 48 | 36 | N | 121 | 88 | 00 | E | AFADs /bamboo | |
| 21 | 29-Oct-14 | 15-16 | 1507 | 7 | 30 | 30 | N | 121 | 36 | 50 | E | AFADs steel drum | colour: white |
| Leg 2 | | | | | | | | | | | | | |
| 22 | 5-Nov-14 | 24 | 1017 | 6 | 49 | 58 | N | 122 | 26 | 99 | E | AFADs /bamboo | |
| 23 | 5-Nov-14 | 24 | 1020 | 6 | 49 | 95 | N | 122 | 28 | 59 | E | AFADs /bamboo | |
| 24 | 5-Nov-14 | 24 | 1022 | 6 | 48 | 42 | N | 122 | 29 | 28 | E | AFADs /bamboo | |
| 25 | 5-Nov-14 | 24 | 1025 | 6 | 50 | 28 | N | 122 | 30 | 53 | E | AFADs /bamboo | |
| 26 | 5-Nov-14 | 24-25 | 1310 | 6 | 50 | 62 | N | 122 | 33 | 74 | E | AFADs steel drum | |
| 27 | 5-Nov-14 | 24-25 | 1330 | 6 | 49 | 28 | N | 122 | 37 | 90 | E | AFADs steel drum | |
| 28 | 5-Nov-14 | 24-25 | 1330 | 6 | 51 | 84 | N | 122 | 37 | 30 | E | AFADs steel drum | |
| 29 | 5-Nov-14 | 24-25 | 1500 | 6 | 50 | 93 | N | 122 | 53 | 14 | E | AFADs steel drum | |
| 30 | 5-Nov-14 | 24-25 | 1510 | 6 | 47 | 48 | N | 122 | 55 | 67 | E | AFADs steel drum | |
| 31 | 5-Nov-14 | 24-25 | 1515 | 6 | 48 | 87 | N | 122 | 57 | 21 | E | AFADs steel drum | |
| 32 | 5-Nov-14 | 24-25 | 1535 | 6 | 51 | 11 | N | 122 | 58 | 02 | E | AFADs steel drum | |
| 33 | 5-Nov-14 | 24-25 | 1540 | 6 | 51 | 38 | N | 123 | 01 | 62 | E | AFADs steel drum | |
| 34 | 5-Nov-14 | 24-25 | 1750 | 6 | 51 | 29 | N | 123 | 01 | 86 | E | AFADs steel drum | |
| 35 | 5-Nov-14 | 24-25 | 1755 | 6 | 52 | 38 | N | 123 | 03 | 33 | E | AFADs steel drum | |
| 36 | 6-Nov-14 | 27-28 | 0600 | 6 | 14 | 98 | N | 123 | 26 | 73 | E | AFADs steel drum | distance 0.1 nm/ 000° |
| 37 | 6-Nov-14 | 27-28 | 0640 | 6 | 14 | 99 | N | 123 | 19 | 31 | E | AFADs steel drum | distance 0.5 nm/ 000° |
| 38 | 6-Nov-14 | 27-28 | 0705 | 6 | 14 | 98 | N | 123 | 14 | 74 | E | AFADs steel drum | distance 0.1 nm/ 000° |
| 39 | 6-Nov-14 | 27-28 | 0705 | 6 | 14 | 98 | N | 123 | 14 | 74 | E | AFADs steel drum | distance 1.8 nm/ 000° |
| 40 | 6-Nov-14 | 27-28 | 0725 | 6 | 17 | 79 | N | 123 | 09 | 21 | E | AFADs steel drum | |
| 41 | 6-Nov-14 | 27-28 | 0727 | 6 | 14 | 93 | N | 123 | 10 | 15 | E | AFADs steel drum | |
| 42 | 6-Nov-14 | 27-28 | 0738 | 6 | 17 | 00 | N | 123 | 04 | 70 | E | AFADs steel drum | with fishing boat |
| 43 | 6-Nov-14 | 27-28 | 0739 | 6 | 13 | 42 | N | 123 | 06 | 77 | E | AFADs steel drum | with fishing boat |
| 44 | 6-Nov-14 | 27-28 | 1135 | 6 | 08 | 82 | N | 122 | 48 | 45 | E | AFADs steel drum | with fishing boat |
| 45 | 6-Nov-14 | 27-28 | 1150 | 6 | 05 | 63 | N | 122 | 46 | 75 | E | AFADs steel drum | with fishing boat |
| 46 | 6-Nov-14 | 27-28 | 1525 | 5 | 47 | 74 | N | 122 | 10 | 04 | E | AFADs steel drum | with fishing boat |
| 47 | 6-Nov-14 | 27-28 | 1530 | 5 | 50 | 58 | N | 122 | 07 | 56 | E | AFADs steel drum | |

| No. | Date | Station | Time | Location | | | | | | | | Type of FADs | Remark |
|-----|----------|---------|------|----------|----|----|---|------|----|----|---|------------------|-----------------------|
| | | | | Lat | | | | Long | | | | | |
| 48 | 6-Nov-14 | 27-28 | 1550 | 5 | 46 | 82 | N | 122 | 05 | 50 | E | AFADs steel drum | |
| 49 | 6-Nov-14 | 27-28 | 1625 | 5 | 46 | 29 | N | 121 | 57 | 93 | E | AFADs steel drum | with fishing boat |
| 50 | 7-Nov-14 | 30-31 | 1200 | 5 | 45 | 83 | N | 123 | 11 | 29 | E | AFADs steel drum | distance 1.7 nm/ 130° |
| 51 | 7-Nov-14 | 30-31 | 1200 | 5 | 42 | 70 | N | 123 | 11 | 93 | E | AFADs steel drum | distance 2.9 nm/ 160° |
| 52 | 7-Nov-14 | 30-31 | 1220 | 5 | 46 | 47 | N | 123 | 16 | 37 | E | AFADs steel drum | distance 2.9 nm/ 040° |
| 53 | 7-Nov-14 | 30-31 | 1242 | 5 | 47 | 47 | N | 123 | 17 | 97 | E | AFADs steel drum | distance 2.5 nm/ 010° |
| 54 | 7-Nov-14 | 30-31 | 1250 | 5 | 46 | 26 | N | 123 | 20 | 68 | E | AFADs steel drum | distance 1.9 nm/ 050° |
| 55 | 7-Nov-14 | 30-31 | 1250 | 5 | 43 | 45 | N | 123 | 22 | 02 | E | AFADs steel drum | distance 2.9 nm/ 125° |
| 56 | 7-Nov-14 | 30-31 | 1310 | 5 | 42 | 72 | N | 123 | 23 | 60 | E | AFADs steel drum | distance 2.3 nm/ 185° |
| 57 | 7-Nov-14 | 30-31 | 1330 | 5 | 45 | 95 | N | 123 | 27 | 12 | E | AFADs steel drum | distance 1.1 nm/ 010° |
| 58 | 7-Nov-14 | 30-31 | 1418 | 5 | 44 | 80 | N | 123 | 32 | 99 | E | AFADs steel drum | distance 1.3 nm/ 100° |
| 59 | 7-Nov-14 | 30-31 | 1427 | 5 | 44 | 35 | N | 123 | 36 | 25 | E | AFADs steel drum | distance 1.4 nm/ 130° |
| 60 | 7-Nov-14 | 30-31 | 1440 | 5 | 46 | 08 | N | 123 | 37 | 74 | E | AFADs steel drum | distance 1.3 nm/ 010° |
| 61 | 7-Nov-14 | 30-31 | 1455 | 5 | 45 | 70 | N | 123 | 40 | 83 | E | AFADs steel drum | distance 1.2 nm/ 030° |
| 62 | 7-Nov-14 | 30-31 | 1520 | 5 | 45 | 76 | N | 123 | 15 | 18 | E | AFADs steel drum | |
| 63 | 7-Nov-14 | 30-31 | 1556 | 5 | 45 | 19 | N | 123 | 23 | 55 | E | AFADs steel drum | |
| 64 | 7-Nov-14 | 30-31 | 1607 | 5 | 44 | 62 | N | 123 | 54 | 31 | E | AFADs steel drum | |
| 65 | 7-Nov-14 | 30-31 | 1612 | 5 | 44 | 76 | N | 123 | 54 | 66 | E | AFADs steel drum | |
| 66 | 7-Nov-14 | 30-31 | 1630 | 5 | 44 | 54 | N | 123 | 54 | 87 | E | AFADs steel drum | |
| 67* | 8-Nov-14 | 33 | 0607 | 5 | 01 | 56 | N | 123 | 59 | 47 | E | AFADs steel drum | collect the sample * |
| 68 | 8-Nov-14 | 33-34 | 0839 | 4 | 59 | 17 | N | 123 | 52 | 91 | E | AFADs steel drum | |
| 69 | 8-Nov-14 | 33-34 | 0925 | 5 | 00 | 02 | N | 123 | 49 | 42 | E | AFADs steel drum | |
| 70 | 8-Nov-14 | 33-34 | 0935 | 5 | 03 | 99 | N | 123 | 47 | 11 | E | AFADs steel drum | |
| 71 | 8-Nov-14 | 33-34 | 0956 | 4 | 57 | 77 | N | 123 | 44 | 83 | E | AFADs steel drum | |
| 72 | 8-Nov-14 | 33-34 | 0948 | 5 | 02 | 59 | N | 123 | 40 | 42 | E | AFADs steel drum | |
| 73 | 8-Nov-14 | 33-34 | 1005 | 5 | 01 | 76 | N | 123 | 39 | 62 | E | AFADs steel drum | |
| 74 | 8-Nov-14 | 33-34 | 1020 | 4 | 58 | 82 | N | 123 | 35 | 10 | E | AFADs steel drum | |
| 75 | 8-Nov-14 | 33-34 | 1046 | 5 | 00 | 36 | N | 123 | 32 | 73 | E | AFADs steel drum | |
| 76 | 8-Nov-14 | 33-34 | 1103 | 5 | 02 | 14 | N | 123 | 27 | 82 | E | AFADs steel drum | |
| 77 | 8-Nov-14 | 33-34 | 1110 | 4 | 58 | 81 | N | 123 | 27 | 42 | E | AFADs steel drum | |
| 78 | 8-Nov-14 | 33-34 | 1115 | 4 | 58 | 64 | N | 123 | 24 | 76 | E | AFADs steel drum | |
| 79 | 8-Nov-14 | 33-34 | 1118 | 4 | 56 | 96 | N | 123 | 25 | 88 | E | AFADs steel drum | |
| 80 | 8-Nov-14 | 33-34 | 1118 | 4 | 56 | 30 | N | 123 | 24 | 13 | E | AFADs steel drum | |
| 81 | 8-Nov-14 | 33-34 | 1148 | 4 | 59 | 23 | N | 123 | 19 | 89 | E | AFADs steel drum | |
| 82 | 8-Nov-14 | 33-34 | 1153 | 5 | 00 | 62 | N | 123 | 18 | 89 | E | AFADs steel drum | |
| 83 | 8-Nov-14 | 33-34 | 1225 | 4 | 59 | 76 | N | 123 | 13 | 28 | E | AFADs steel drum | distance 0.8 nm/ 255° |
| 84 | 8-Nov-14 | 33-34 | 1231 | 4 | 57 | 83 | N | 123 | 10 | 90 | E | AFADs steel drum | distance 2.8 nm/ 221° |
| 85 | 8-Nov-14 | 33-34 | 1247 | 4 | 58 | 20 | N | 123 | 08 | 59 | E | AFADs steel drum | distance 1.9 nm/ 205° |
| 86* | 8-Nov-14 | 33-34 | 1630 | 5 | 03 | 09 | N | 123 | 02 | 11 | E | AFADs steel drum | collect the sample * |
| 87 | 8-Nov-14 | 34-35 | 1655 | 4 | 58 | 54 | N | 122 | 50 | 11 | E | AFADs steel drum | |
| 88 | 8-Nov-14 | 34-35 | 1700 | 4 | 56 | 78 | N | 122 | 55 | 45 | E | AFADs steel drum | |
| 89 | 8-Nov-14 | 34-35 | 1725 | 5 | 00 | 84 | N | 122 | 55 | 15 | E | AFADs steel drum | |
| 90 | 8-Nov-14 | 34-35 | 1725 | 4 | 58 | 27 | N | 122 | 47 | 02 | E | AFADs steel drum | |
| 91 | 8-Nov-14 | 34-35 | 1725 | 4 | 57 | 13 | N | 122 | 49 | 81 | E | AFADs steel drum | |
| 92 | 8-Nov-14 | 34-35 | 1730 | 4 | 58 | 74 | N | 122 | 47 | 62 | E | AFADs steel drum | |
| 93 | 8-Nov-14 | 34-35 | 1810 | 4 | 59 | 98 | N | 122 | 43 | 20 | E | AFADs steel drum | |
| 94 | 9-Nov-14 | 36-37 | 0530 | 5 | 22 | 17 | N | 121 | 31 | 22 | E | AFADs steel drum | |
| 95 | 9-Nov-14 | 36-37 | 0545 | 5 | 22 | 50 | N | 121 | 28 | 96 | E | AFADs steel drum | |
| 96 | 9-Nov-14 | 36-37 | 0552 | 5 | 19 | 17 | N | 121 | 27 | 54 | E | AFADs steel drum | |

| No. | Date | Station | Time | Location | | | | | | | | Type of FADs | Remark |
|-----|-----------|---------|------|----------|----|----|---|------|----|----|---|------------------|------------------------|
| | | | | Lat | | | | Long | | | | | |
| 97 | 9-Nov-14 | 36-37 | 0604 | 5 | 18 | 94 | N | 121 | 24 | 70 | E | AFADs steel drum | |
| 98 | 9-Nov-14 | 36-37 | 0605 | 5 | 16 | 65 | N | 121 | 26 | 58 | E | AFADs steel drum | |
| 99 | 9-Nov-14 | 36-37 | 0605 | 5 | 19 | 50 | N | 121 | 24 | 29 | E | AFADs steel drum | |
| 100 | 9-Nov-14 | 36-37 | 0633 | 5 | 16 | 03 | N | 121 | 20 | 46 | E | AFADs steel drum | |
| 101 | 9-Nov-14 | 36-37 | 0640 | 5 | 12 | 69 | N | 121 | 20 | 28 | E | AFADs steel drum | |
| 102 | 9-Nov-14 | 36-37 | 0649 | 5 | 12 | 73 | N | 121 | 20 | 30 | E | AFADs steel drum | |
| 103 | 9-Nov-14 | 36-37 | 0651 | 5 | 13 | 38 | N | 121 | 16 | 41 | E | AFADs steel drum | |
| 104 | 9-Nov-14 | 36-37 | 0701 | 5 | 11 | 07 | N | 121 | 16 | 74 | E | AFADs steel drum | |
| 105 | 9-Nov-14 | 36-37 | 0715 | 5 | 04 | 42 | N | 121 | 13 | 39 | E | AFADs steel drum | |
| 106 | 9-Nov-14 | 36-37 | 0747 | 5 | 05 | 78 | N | 121 | 10 | 08 | E | AFADs steel drum | |
| 107 | 9-Nov-14 | 36-37 | 0753 | 5 | 03 | 71 | N | 121 | 09 | 60 | E | AFADs steel drum | |
| 108 | 9-Nov-14 | 36-37 | 0821 | 5 | 01 | 69 | N | 121 | 04 | 01 | E | AFADs steel drum | with fishing boat |
| 109 | 9-Nov-14 | 36-37 | 0827 | 5 | 03 | 41 | N | 121 | 02 | 04 | E | AFADs steel drum | |
| 110 | 9-Nov-14 | 36-37 | 0840 | 5 | 02 | 38 | N | 121 | 00 | 00 | E | AFADs steel drum | |
| 111 | 9-Nov-14 | 36-37 | 0844 | 4 | 59 | 53 | N | 121 | 00 | 21 | E | AFADs steel drum | |
| 112 | 9-Nov-14 | 36-37 | 0846 | 5 | 00 | 77 | N | 121 | 57 | 53 | E | AFADs steel drum | |
| 113 | 9-Nov-14 | 37-38 | 1228 | 4 | 54 | 58 | N | 121 | 09 | 94 | E | AFADs steel drum | distance 1.6 nm/ 135° |
| 114 | 9-Nov-14 | 37-38 | 1309 | 4 | 50 | 83 | N | 121 | 14 | 35 | E | AFADs steel drum | distance 2.0 nm/ 196° |
| 115 | 9-Nov-14 | 37-38 | 1320 | 4 | 51 | 54 | N | 121 | 17 | 14 | E | AFADs steel drum | distance 0.6 nm/ 132° |
| 116 | 9-Nov-14 | 37-38 | 1328 | 4 | 48 | 95 | N | 121 | 18 | 04 | E | AFADs steel drum | distance 2.4 nm/ 180° |
| 117 | 9-Nov-14 | 37-38 | 1345 | 4 | 49 | 60 | N | 121 | 22 | 43 | E | AFADs steel drum | distance 1.8 nm/ 107° |
| 118 | 9-Nov-14 | 37-38 | 1346 | 4 | 49 | 16 | N | 121 | 23 | 45 | E | AFADs steel drum | distance 2.2 nm/ 106° |
| 119 | 9-Nov-14 | 37-38 | 1416 | 4 | 45 | 72 | N | 121 | 25 | 38 | E | AFADs steel drum | distance 2.1 nm/ 180° |
| 120 | 9-Nov-14 | 37-38 | 1421 | 4 | 46 | 89 | N | 121 | 27 | 22 | E | AFADs steel drum | distance 1.3 nm/ 118° |
| 121 | 9-Nov-14 | 37-38 | 1442 | 4 | 43 | 52 | N | 121 | 30 | 78 | E | AFADs steel drum | distance 2.8 nm/ 148° |
| 122 | 9-Nov-14 | 37-38 | 1447 | 4 | 46 | 80 | N | 121 | 30 | 44 | E | AFADs steel drum | distance 1.2 nm/ 180° |
| 123 | 9-Nov-14 | 37-38 | 1448 | 4 | 45 | 66 | N | 121 | 30 | 97 | E | AFADs steel drum | distance 0.7 nm/ 076° |
| 124 | 9-Nov-14 | 37-38 | 1449 | 4 | 44 | 67 | N | 121 | 31 | 94 | E | AFADs steel drum | distance 1.7 nm/ 119° |
| 125 | 9-Nov-14 | 37-38 | 1530 | 4 | 41 | 51 | N | 121 | 36 | 15 | E | AFADs steel drum | |
| 126 | 9-Nov-14 | 37-38 | 1540 | 4 | 42 | 58 | N | 121 | 39 | 99 | E | AFADs steel drum | |
| 127 | 9-Nov-14 | 37-38 | 1620 | 4 | 38 | 59 | N | 121 | 42 | 97 | E | AFADs steel drum | with fishing boat |
| 128 | 9-Nov-14 | 37-38 | 1643 | 4 | 37 | 57 | N | 121 | 46 | 88 | E | AFADs steel drum | |
| 129 | 9-Nov-14 | 37-38 | 1643 | 4 | 35 | 60 | N | 121 | 47 | 64 | E | AFADs steel drum | with fishing boat |
| 130 | 9-Nov-14 | 37-38 | 1655 | 4 | 36 | 84 | N | 121 | 49 | 29 | E | AFADs steel drum | colour: white / red |
| 131 | 9-Nov-14 | 37-38 | 1655 | 4 | 35 | 02 | N | 121 | 50 | 14 | E | AFADs steel drum | colour: Orange / white |
| 132 | 9-Nov-14 | 37-38 | 1710 | 4 | 35 | 02 | N | 121 | 52 | 04 | E | AFADs steel drum | colour: Orange / white |
| 133 | 9-Nov-14 | 37-38 | 1736 | 4 | 31 | 80 | N | 121 | 53 | 67 | E | AFADs steel drum | colour: Orange / white |
| 134 | 10-Nov-14 | 38-39 | 1313 | 3 | 59 | 51 | N | 122 | 57 | 35 | E | AFADs steel drum | colour: Orange / white |
| 135 | 10-Nov-14 | 38-39 | 1314 | 4 | 00 | 35 | N | 122 | 57 | 40 | E | AFADs steel drum | colour: Orange / white |
| 136 | 10-Nov-14 | 38-39 | 1315 | 3 | 59 | 00 | N | 122 | 56 | 61 | E | AFADs steel drum | colour: Orange / white |
| 137 | 10-Nov-14 | 38-39 | 1337 | 4 | 00 | 83 | N | 122 | 53 | 85 | E | AFADs steel drum | colour: Orange / white |
| 138 | 10-Nov-14 | 38-39 | 1339 | 3 | 58 | 91 | N | 122 | 50 | 30 | E | AFADs steel drum | colour: Orange / white |
| 139 | 10-Nov-14 | 38-39 | 1351 | 4 | 01 | 19 | N | 122 | 47 | 94 | E | AFADs steel drum | colour: Orange / white |
| 140 | 10-Nov-14 | 38-39 | 1408 | 4 | 02 | 20 | N | 122 | 45 | 21 | E | AFADs steel drum | colour: Orange / white |
| 141 | 10-Nov-14 | 38-39 | 1423 | 4 | 01 | 47 | N | 122 | 42 | 75 | E | AFADs steel drum | colour: Orange / white |
| 142 | 10-Nov-14 | 38-39 | 1434 | 3 | 58 | 21 | N | 122 | 41 | 41 | E | AFADs steel drum | colour: Orange / white |
| 143 | 10-Nov-14 | 38-39 | 1454 | 4 | 01 | 46 | N | 122 | 35 | 75 | E | AFADs steel drum | colour: yellow / green |
| 144 | 10-Nov-14 | 38-39 | 1456 | 3 | 58 | 59 | N | 122 | 36 | 20 | E | AFADs steel drum | colour: Orange / white |
| 145 | 10-Nov-14 | 38-39 | 1513 | 3 | 59 | 54 | N | 122 | 33 | 89 | E | AFADs steel drum | colour: Orange / white |

| No. | Date | Station | Time | Location | | | | | | | | Type of FADs | Remark |
|---------------------------|-----------|---------|------|----------|----|----|---|------|----|----|---|------------------|--------------------------------|
| | | | | Lat | | | | Long | | | | | |
| 146 | 10-Nov-14 | 38-39 | 1513 | 4 | 01 | 34 | N | 122 | 35 | 71 | E | AFADs steel drum | |
| 147 | 10-Nov-14 | 38-39 | 1523 | 4 | 01 | 43 | N | 122 | 30 | 78 | E | AFADs steel drum | |
| 148 | 10-Nov-14 | 38-39 | 1525 | 4 | 02 | 95 | N | 122 | 29 | 20 | E | AFADs steel drum | |
| 149 | 10-Nov-14 | 38-39 | 1535 | 4 | 00 | 59 | N | 122 | 30 | 14 | E | AFADs steel drum | colour: Orange |
| 150 | 10-Nov-14 | 38-39 | 1540 | 3 | 58 | 88 | N | 122 | 28 | 59 | E | AFADs steel drum | colour: Orange |
| 151 | 10-Nov-14 | 38-39 | 1540 | 3 | 58 | 67 | N | 122 | 27 | 62 | E | AFADs steel drum | |
| 152 | 10-Nov-14 | 38-39 | 1552 | 4 | 00 | 45 | N | 122 | 27 | 15 | E | AFADs steel drum | colour: Orange |
| 153 | 10-Nov-14 | 38-39 | 1557 | 3 | 50 | 04 | N | 122 | 26 | 03 | E | AFADs steel drum | colour: Green |
| 154 | 10-Nov-14 | 38-39 | 1605 | 3 | 59 | 15 | N | 122 | 23 | 54 | E | AFADs steel drum | |
| 155 | 10-Nov-14 | 38-39 | 1605 | 3 | 59 | 22 | N | 122 | 23 | 06 | E | AFADs steel drum | colour: Green |
| 156 | 10-Nov-14 | 38-39 | 1610 | 3 | 58 | 03 | N | 122 | 21 | 50 | E | AFADs steel drum | |
| 157 | 10-Nov-14 | 38-39 | 1620 | 4 | 00 | 04 | N | 122 | 20 | 70 | E | AFADs steel drum | colour: Green |
| 158 | 10-Nov-14 | 38-39 | 1622 | 4 | 01 | 38 | N | 122 | 18 | 81 | E | AFADs steel drum | colour: Green |
| 159 | 11-Nov-14 | 40-41 | 0520 | 3 | 59 | 69 | N | 120 | 41 | 60 | E | AFADs steel drum | colour: Orange / yellow |
| 160 | 11-Nov-14 | 40-41 | 0613 | 4 | 00 | 16 | N | 120 | 31 | 06 | E | AFADs steel drum | colour: Orange / yellow |
| 161 | 11-Nov-14 | 40-41 | 0615 | 4 | 00 | 90 | N | 120 | 31 | 01 | E | AFADs steel drum | colour: Orange / yellow |
| 162 | 11-Nov-14 | 40-41 | 0615 | 3 | 59 | 06 | N | 120 | 29 | 56 | E | AFADs steel drum | colour: Orange / yellow |
| 163* | 11-Nov-14 | 41 | 0625 | 4 | 02 | 87 | N | 121 | 28 | 05 | E | AFADs steel drum | collect the sample * |
| 164 | 11-Nov-14 | 41-42 | 1110 | 3 | 58 | 31 | N | 120 | 23 | 75 | E | AFADs steel drum | colour: Orange |
| 165 | 11-Nov-14 | 41-42 | 1130 | 3 | 59 | 94 | N | 120 | 19 | 45 | E | AFADs steel drum | colour: Orange / Red |
| 166 | 11-Nov-14 | 41-42 | 1140 | 3 | 59 | 78 | N | 120 | 17 | 41 | E | AFADs steel drum | colour: Orange / Red |
| 167 | 11-Nov-14 | 41-42 | 1236 | 3 | 59 | 47 | N | 120 | 08 | 39 | E | AFADs steel drum | colour: Yellow /Green |
| 168 | 11-Nov-14 | 41-42 | 1245 | 3 | 59 | 03 | N | 120 | 05 | 09 | E | AFADs steel drum | colour: Yellow /Green |
| 169 | 11-Nov-14 | 41-42 | 1248 | 3 | 01 | 24 | N | 120 | 05 | 24 | E | AFADs steel drum | colour: Yellow /Green |
| 170 | 11-Nov-14 | 41-42 | 1310 | 3 | 59 | 53 | N | 120 | 01 | 13 | E | AFADs steel drum | colour: Yellow /Green |
| 171 | 11-Nov-14 | 41-42 | 1330 | 3 | 59 | 11 | N | 119 | 57 | 95 | E | AFADs steel drum | colour: Yellow /Green |
| 172 | 11-Nov-14 | 41-42 | 1410 | 3 | 59 | 04 | N | 119 | 50 | 05 | E | AFADs steel drum | colour: Orange |
| 173 | 11-Nov-14 | 41-42 | 1426 | 3 | 37 | 49 | N | 119 | 47 | 13 | E | AFADs steel drum | colour: Orange |
| 174 | 11-Nov-14 | 41-42 | 1427 | 3 | 01 | 12 | N | 119 | 46 | 10 | E | AFADs steel drum | colour: Orange |
| 175 | 11-Nov-14 | 41-42 | 1431 | 3 | 59 | 12 | N | 119 | 46 | 72 | E | AFADs steel drum | colour: Orange |
| Leave Sandakan for Bitung | | | | | | | | | | | | | |
| 176 | 18-Nov-14 | | 0545 | 3 | 55 | 22 | N | 121 | 25 | 62 | E | AFADs steel drum | distance 0.3 nm/ 200° / Yellow |
| 177 | 18-Nov-14 | | 0546 | 3 | 55 | 05 | N | 121 | 25 | 80 | E | AFADs steel drum | distance 0.3 nm/ 080°/ Yellow |
| 178 | 18-Nov-14 | | 0550 | 3 | 50 | 68 | N | 121 | 26 | 61 | E | AFADs steel drum | distance 1.5 nm/ 180°/ Yellow |
| 179 | 18-Nov-14 | | 0551 | 3 | 50 | 61 | N | 121 | 26 | 74 | E | AFADs steel drum | distance 1.5 nm/ 175°/ Yellow |
| 180 | 18-Nov-14 | | 0552 | 3 | 50 | 39 | N | 121 | 27 | 10 | E | AFADs steel drum | distance 1.5 nm/ 090°/ Yellow |
| 181 | 18-Nov-14 | | 0555 | 3 | 50 | 16 | N | 121 | 27 | 68 | E | AFADs steel drum | distance 1.5 nm/ 010°/ Yellow |
| 182 | 18-Nov-14 | | 0559 | 3 | 49 | 94 | N | 121 | 28 | 05 | E | AFADs steel drum | distance 2.0 nm/ 160°/ Yellow |
| 183 | 18-Nov-14 | | 0609 | 3 | 53 | 09 | N | 121 | 25 | 35 | E | AFADs steel drum | distance 2.0 nm/ 130°/ Yellow |
| 184 | 18-Nov-14 | | 0622 | 3 | 53 | 27 | N | 121 | 29 | 17 | E | AFADs steel drum | |
| 185 | 18-Nov-14 | | 0624 | 3 | 49 | 62 | N | 121 | 28 | 71 | E | AFADs steel drum | |
| 186 | 18-Nov-14 | | 0635 | 3 | 50 | 86 | N | 121 | 32 | 66 | E | AFADs steel drum | |
| 187 | 18-Nov-14 | | 0636 | 3 | 49 | 93 | N | 121 | 31 | 38 | E | AFADs steel drum | |
| 188 | 18-Nov-14 | | 0641 | 3 | 51 | 47 | N | 121 | 31 | 28 | E | AFADs steel drum | colour: white |
| 189 | 18-Nov-14 | | 0642 | 3 | 51 | 98 | N | 121 | 32 | 26 | E | AFADs steel drum | Purse seine fishing boat |
| 190 | 18-Nov-14 | | 0643 | 3 | 49 | 69 | N | 121 | 31 | 39 | E | AFADs steel drum | colour: Orange / white |
| 191 | 18-Nov-14 | | 0650 | 3 | 47 | 30 | N | 121 | 32 | 59 | E | AFADs steel drum | Purse seine fishing boat |
| 192 | 18-Nov-14 | | 0656 | 3 | 50 | 10 | N | 121 | 33 | 81 | E | AFADs steel drum | colour: white / green |
| 193 | 18-Nov-14 | | 0659 | 3 | 50 | 71 | N | 121 | 36 | 99 | E | AFADs steel drum | Purse seine fishing boat |

| No. | Date | Station | Time | Location | | | | | | | | Type of FADs | Remark |
|--------------|-----------|---------|------|----------|----|----|---|------|----|----|---|------------------|------------------------------------|
| | | | | Lat | | | | Long | | | | | |
| 194 | 18-Nov-14 | | 0700 | 3 | 49 | 10 | N | 121 | 34 | 62 | E | AFADs steel drum | colour: Red / white |
| 195 | 18-Nov-14 | | 0707 | 3 | 47 | 60 | N | 121 | 35 | 72 | E | AFADs steel drum | colour: Red / white No.38 |
| 196 | 18-Nov-14 | | 0715 | 3 | 45 | 67 | N | 121 | 35 | 97 | E | AFADs steel drum | |
| 197 | 18-Nov-14 | | 0720 | 3 | 48 | 48 | N | 121 | 38 | 32 | E | AFADs steel drum | Purse seine fishing boat |
| 198 | 18-Nov-14 | | 0728 | 3 | 46 | 45 | N | 121 | 38 | 23 | E | AFADs steel drum | colour: Red / white |
| 199 | 18-Nov-14 | | 0740 | 3 | 43 | 93 | N | 121 | 42 | 11 | E | AFADs steel drum | Purse seine fishing boat |
| 200 | 18-Nov-14 | | 0740 | 3 | 44 | 27 | N | 121 | 40 | 30 | E | AFADs steel drum | colour: Red / white |
| 201 | 18-Nov-14 | | 0743 | 3 | 43 | 79 | N | 121 | 39 | 40 | E | AFADs steel drum | colour: Red / white |
| 202 | 18-Nov-14 | | 0750 | 3 | 46 | 03 | N | 121 | 42 | 56 | E | AFADs steel drum | colour: Red / white |
| 203 | 18-Nov-14 | | 0800 | 3 | 43 | 49 | N | 121 | 43 | 22 | E | AFADs steel drum | colour: Red / white (NHO 99) |
| 204 | 18-Nov-14 | | 0812 | 3 | 44 | 04 | N | 121 | 46 | 09 | E | AFADs steel drum | colour: Red / white |
| 205 | 18-Nov-14 | | 0818 | 3 | 39 | 83 | N | 121 | 45 | 35 | E | AFADs steel drum | colour: Red / white |
| 206 | 18-Nov-14 | | 0830 | 3 | 41 | 36 | N | 121 | 47 | 46 | E | AFADs steel drum | colour: Red / white |
| 207 | 18-Nov-14 | | 0835 | 3 | 38 | 16 | N | 121 | 49 | 65 | E | AFADs steel drum | Purse seine fishing boat |
| 208 | 18-Nov-14 | | 0900 | 3 | 39 | 64 | N | 121 | 52 | 30 | E | AFADs steel drum | colour: Red / white |
| 209 | 18-Nov-14 | | 0923 | 3 | 35 | 12 | N | 121 | 55 | 81 | E | AFADs steel drum | colour: Red / white |
| 210 | 18-Nov-14 | | 0930 | 3 | 38 | 94 | N | 121 | 55 | 56 | E | AFADs steel drum | colour: Red / white |
| 211 | 18-Nov-14 | | 0940 | 3 | 35 | 54 | N | 121 | 58 | 88 | E | AFADs steel drum | colour: Red / white |
| 212 | 18-Nov-14 | | 0942 | 3 | 38 | 35 | N | 121 | 59 | 17 | E | AFADs steel drum | colour: Red / white / fishing boat |
| 213 | 18-Nov-14 | | 1005 | 3 | 34 | 81 | N | 121 | 01 | 45 | E | AFADs steel drum | colour: Red / white |
| 214 | 18-Nov-14 | | 1010 | 3 | 26 | 88 | N | 122 | 02 | 41 | E | AFADs steel drum | colour: Red / white |
| 215 | 18-Nov-14 | | 1011 | 3 | 31 | 70 | N | 122 | 04 | 55 | E | AFADs steel drum | colour: Red / white |
| 216 | 18-Nov-14 | | 1020 | 3 | 28 | 44 | N | 122 | 05 | 41 | E | AFADs steel drum | colour: Red / white |
| 217 | 18-Nov-14 | | 1031 | 3 | 31 | 68 | N | 122 | 07 | 25 | E | AFADs steel drum | colour: Red / white |
| 218 | 18-Nov-14 | | 1035 | 3 | 28 | 47 | N | 122 | 05 | 27 | E | AFADs steel drum | colour: Red / white |
| 219 | 18-Nov-14 | | 1047 | 3 | 27 | 81 | N | 122 | 08 | 27 | E | AFADs steel drum | colour: Red / white |
| 220 | 18-Nov-14 | | 1049 | 3 | 32 | 09 | N | 122 | 10 | 46 | E | AFADs steel drum | colour: Red / white |
| 221 | 18-Nov-14 | | 1100 | 3 | 29 | 73 | N | 122 | 11 | 21 | E | AFADs steel drum | colour: Red / white |
| 222 | 18-Nov-14 | | 1105 | 3 | 28 | 00 | N | 122 | 13 | 37 | E | AFADs steel drum | colour: Red / white / fishing boat |
| 223 | 18-Nov-14 | | 1108 | 3 | 26 | 49 | N | 122 | 10 | 77 | E | AFADs steel drum | colour: Red / white |
| 224 | 18-Nov-14 | | 1113 | 3 | 25 | 68 | N | 122 | 12 | 60 | E | AFADs steel drum | colour: Red / white |
| 225 | 18-Nov-14 | | 1116 | 3 | 31 | 69 | N | 122 | 13 | 35 | E | AFADs steel drum | colour: Red / white |
| 226 | 18-Nov-14 | | 1120 | 3 | 26 | 24 | N | 122 | 15 | 17 | E | AFADs steel drum | colour: Red / white |
| 227 | 18-Nov-14 | | 1140 | 3 | 27 | 98 | N | 122 | 18 | 50 | E | AFADs steel drum | colour: Red / white / fishing boat |
| 228 | 18-Nov-14 | | 1147 | 3 | 22 | 65 | N | 122 | 16 | 54 | E | AFADs steel drum | colour: Red / white |
| 229 | 18-Nov-14 | | 1647 | 2 | 59 | 16 | N | 123 | 00 | 91 | E | AFADs steel drum | floating hut |
| 230 | 19-Nov-14 | | 0700 | 1 | 41 | 05 | N | 125 | 14 | 55 | E | AFADs/ stylefoam | colour: Yellow / fishing boat |
| 231 | 19-Nov-14 | | 0747 | 1 | 32 | 85 | N | 125 | 18 | 45 | E | AFADs/ stylefoam | colour: Yellow |
| Leg 3 | | | | | | | | | | | | | |
| 232 | 22-Nov-14 | B- 45 | 1621 | 2 | 27 | 17 | N | 125 | 01 | 06 | E | AFADs steel drum | colour: white |
| 233 | 22-Nov-14 | B- 45 | 1621 | 2 | 28 | 70 | N | 124 | 56 | 94 | E | AFADs steel drum | floating hut |
| 234 | 22-Nov-14 | B- 45 | 1622 | 2 | 31 | 65 | N | 124 | 59 | 66 | E | AFADs steel drum | floating hut |
| 235 | 24-Nov-14 | 50-51 | 0621 | 2 | 28 | 45 | N | 123 | 19 | 54 | E | AFADs steel drum | floating hut |
| 236 | 24-Nov-14 | 50-51 | 0621 | 2 | 27 | 81 | N | 123 | 20 | 17 | E | AFADs steel drum | floating hut |
| 237 | 24-Nov-14 | 50-51 | 0622 | 2 | 31 | 64 | N | 123 | 19 | 35 | E | AFADs steel drum | floating hut |
| 238 | 24-Nov-14 | 50-51 | 0820 | 2 | 28 | 62 | N | 123 | 01 | 63 | E | AFADs steel drum | floating hut |
| 239* | 24-Nov-14 | 50-51 | 0820 | 2 | 30 | 23 | N | 122 | 59 | 76 | E | AFADs steel drum | floating hut *EK-60/fish sampling |
| 240 | 24-Nov-14 | 51-52 | 1257 | 2 | 30 | 87 | N | 122 | 51 | 61 | E | AFADs steel drum | colour: Blue |
| 241 | 24-Nov-14 | 51-52 | 1310 | 2 | 30 | 51 | N | 122 | 49 | 54 | E | AFADs /Bamboo | |
| 242 | 24-Nov-14 | 51-52 | 1315 | 2 | 29 | 46 | N | 122 | 48 | 47 | E | AFADs steel drum | colour: white |

| No. | Date | Station | Time | Location | | | | | | | | Type of FADs | Remark |
|------|-----------|---------|------|----------|----|----|---|------|----|----|---|------------------|-----------------------------------|
| | | | | Lat | | | | Long | | | | | |
| 243 | 24-Nov-14 | 51-52 | 1335 | 2 | 28 | 77 | N | 122 | 44 | 53 | E | AFADs steel drum | colour: white |
| 244 | 24-Nov-14 | 51-52 | 1338 | 2 | 27 | 99 | N | 122 | 42 | 64 | E | AFADs steel drum | colour: Red / white |
| 245 | 24-Nov-14 | 51-52 | 1350 | 2 | 32 | 73 | N | 122 | 41 | 38 | E | AFADs steel drum | colour: blue/white / fishing boat |
| 246 | 24-Nov-14 | 51-52 | 1420 | 2 | 28 | 22 | N | 122 | 37 | 39 | E | AFADs steel drum | colour: blue |
| 247 | 24-Nov-14 | 51-52 | 1735 | 2 | 30 | 05 | N | 122 | 06 | 36 | E | AFADs steel drum | colour: blue |
| 248 | 26-Nov-14 | 56-57 | 0705 | 1 | 28 | 80 | N | 119 | 57 | 89 | E | AFADs steel drum | colour: blue |
| 249 | 26-Nov-14 | 56-57 | 0715 | 1 | 31 | 87 | N | 120 | 00 | 67 | E | AFADs steel drum | colour: blue |
| 250 | 26-Nov-14 | 56-57 | 0802 | 1 | 27 | 43 | N | 120 | 07 | 08 | E | AFADs steel drum | floating hut |
| 251 | 26-Nov-14 | 56-57 | 0810 | 1 | 29 | 95 | N | 120 | 10 | 68 | E | AFADs steel drum | fishing boat |
| 252 | 26-Nov-14 | 57-58 | 1155 | 1 | 31 | 06 | N | 120 | 33 | 76 | E | AFADs /stylefoam | colour: white / fishing boat |
| 253* | 26-Nov-14 | 57-58 | 1205 | 1 | 31 | 43 | N | 120 | 34 | 74 | E | AFADs /stylefoam | colour: yellow / fishing boat* |
| | | | | | | | | | | | | | EK-60 / fish sampling |
| 254 | 26-Nov-14 | 57-58 | 1518 | 1 | 28 | 02 | N | 120 | 42 | 17 | E | AFADs /Bamboo | |
| 255 | 26-Nov-14 | 57-58 | 1525 | 1 | 31 | 81 | N | 120 | 43 | 24 | E | AFADs /Bamboo | |
| 256 | 26-Nov-14 | 57-58 | 1535 | 1 | 30 | 30 | N | 120 | 45 | 75 | E | AFADs /Bamboo | with stylefoam |
| 257 | 26-Nov-14 | 57-58 | 1555 | 1 | 32 | 23 | N | 120 | 50 | 13 | E | AFADs /Bamboo | with stylefoam |
| 258 | 27-Nov-14 | 59-60 | 0545 | 1 | 29 | 68 | N | 122 | 41 | 98 | E | AFADs steel drum | colour: blue/white |
| 259 | 27-Nov-14 | 59-60 | 0630 | 1 | 29 | 31 | N | 122 | 50 | 17 | E | AFADs steel drum | colour: red |
| 260 | 27-Nov-14 | 59-60 | 0633 | 1 | 31 | 03 | N | 122 | 52 | 63 | E | AFADs steel drum | Ring net fishing boat |
| 261 | 27-Nov-14 | 59-60 | 0710 | 1 | 30 | 16 | N | 122 | 57 | 19 | E | AFADs steel drum | colour: Red |
| 262 | 27-Nov-14 | 59-60 | 0743 | 1 | 28 | 42 | N | 123 | 02 | 47 | E | AFADs steel drum | |
| 263 | 27-Nov-14 | 59-60 | 0753 | 1 | 27 | 28 | N | 123 | 04 | 67 | E | AFADs steel drum | |
| 264 | 27-Nov-14 | 59-60 | 0830 | 1 | 27 | 45 | N | 123 | 11 | 81 | E | AFADs steel drum | |
| 265 | 27-Nov-14 | 59-60 | 0835 | 1 | 31 | 77 | N | 123 | 10 | 92 | E | AFADs steel drum | |
| 266 | 27-Nov-14 | 59-60 | 0840 | 1 | 30 | 96 | N | 123 | 12 | 26 | E | AFADs steel drum | |
| 267 | 27-Nov-14 | 59-60 | 0840 | 1 | 30 | 54 | N | 123 | 13 | 94 | E | AFADs steel drum | |
| 268 | 27-Nov-14 | 59-60 | 0900 | 1 | 27 | 82 | N | 123 | 14 | 96 | E | AFADs steel drum | |
| 269 | 27-Nov-14 | 59-60 | 0931 | 1 | 31 | 32 | N | 123 | 30 | 64 | E | AFADs steel drum | |
| 270 | 27-Nov-14 | 59-60 | 0931 | 1 | 28 | 00 | N | 123 | 22 | 36 | E | AFADs steel drum | |
| 271 | 27-Nov-14 | 59-60 | 1010 | 1 | 30 | 36 | N | 123 | 29 | 68 | E | AFADs steel drum | colour: Yellow |
| 272 | 27-Nov-14 | 59-60 | 1010 | 1 | 31 | 22 | N | 123 | 29 | 37 | E | AFADs steel drum | colour: Blue/white |
| 273 | 27-Nov-14 | 59-60 | 1015 | 1 | 29 | 07 | N | 123 | 29 | 49 | E | AFADs steel drum | colour: Yellow |
| 274 | 27-Nov-14 | 59-60 | 1343 | 1 | 30 | 31 | N | 123 | 29 | 70 | E | AFADs steel drum | colour: Orange |
| 275 | 27-Nov-14 | 59-60 | 1343 | 1 | 31 | 17 | N | 123 | 29 | 29 | E | AFADs steel drum | colour: Orange |
| 276 | 27-Nov-14 | 60-61 | 1415 | 1 | 29 | 94 | N | 123 | 35 | 39 | E | AFADs steel drum | colour: Red/white |
| 277 | 27-Nov-14 | 60-61 | 1433 | 1 | 31 | 85 | N | 123 | 40 | 14 | E | AFADs steel drum | colour: Red |
| 278 | 27-Nov-14 | 60-61 | 1445 | 1 | 29 | 43 | N | 123 | 42 | 75 | E | AFADs steel drum | with small house |
| 279 | 27-Nov-14 | 60-61 | 1506 | 1 | 29 | 56 | N | 123 | 47 | 73 | E | AFADs steel drum | colour: white / small house |
| 280 | 27-Nov-14 | 60-61 | 1638 | 1 | 30 | 54 | N | 124 | 03 | 01 | E | AFADs steel drum | |
| 281 | 27-Nov-14 | 60-61 | 1638 | 1 | 31 | 52 | N | 124 | 01 | 73 | E | AFADs steel drum | colour: Red |
| 282 | 27-Nov-14 | 60-61 | 1645 | 1 | 27 | 14 | N | 124 | 02 | 97 | E | AFADs steel drum | |
| 283 | 27-Nov-14 | 60-61 | 1652 | 1 | 31 | 18 | N | 124 | 05 | 95 | E | AFADs steel drum | |
| 284 | 27-Nov-14 | 60-61 | 1656 | 1 | 29 | 60 | N | 124 | 07 | 51 | E | AFADs steel drum | |
| 285 | 27-Nov-14 | 60-61 | 1700 | 1 | 31 | 5 | N | 124 | 05 | 44 | E | AFADs steel drum | |
| 286 | 27-Nov-14 | 60-61 | 1715 | 1 | 27 | 67 | N | 124 | 10 | 74 | E | AFADs steel drum | |
| 287 | 27-Nov-14 | 60-61 | 1716 | 1 | 28 | 74 | N | 124 | 10 | 92 | E | AFADs steel drum | |

Appendix 3 FADs/*Payaos* inventory in Sulu and Sulawesi Seas the second cruise survey in 28 April to 5 May 2015

| No. | Date | Station | Time | Location | | | | | Type of FADs | Remark | |
|-------|-----------|----------|------|----------|--------|---|-----|--------|--------------|------------------|------------------------------------|
| | | | | Lat | Long | | | | | | |
| 1 | 28-Mar-15 | to St.1 | 1130 | 9 | 49.67 | N | 118 | 1.29 | E | AFADs steel drum | colour: orange |
| 2 | 29-Mar-15 | 3 | 0927 | 10 | 14.96 | N | 121 | 30.22 | E | AFADs/Stylefoam | |
| 3 | 30-Mar-15 | 11- 6 | 0620 | 8 | 51.84 | N | 122 | 25.44 | E | AFADs steel drum | |
| 4 | 30-Mar-15 | 11- 6 | 0750 | 8 | 56.72 | N | 122 | 11.88 | E | AFADs /bamboo | |
| 5 | 30-Mar-15 | 11- 6 | 0930 | 9 | 3.52 | N | 121 | 56.19 | E | AFADs steel drum | |
| 6 | 31-Mar-15 | 9-10 | 1105 | 9 | 9.01 | N | 118 | 50.06 | E | AFADs steel drum | 3 fishing boat |
| 7 | 31-Mar-15 | 9-10 | 1320 | 8 | 48.50 | N | 118 | 35.98 | E | AFADs steel drum | 1 fishing boat |
| 8 | 31-Mar-15 | 9-10 | 1340 | 8 | 42.34 | N | 118 | 31.26 | E | AFADs steel drum | 3 fishing boat |
| 9 | 31-Mar-15 | 9-10 | 1347 | 8 | 43.50 | N | 118 | 37.22 | E | AFADs steel drum | colour: white |
| 10 | 31-Mar-15 | 10 | 1625 | 8 | 39.63 | N | 118 | 28.10 | E | AFADs steel drum | colour: white |
| 11 | 31-Mar-15 | 10-11 | 1700 | 8 | 40.99 | N | 118 | 35.48 | E | AFADs/Stylefoam | |
| 12* | 4-Apr-15 | 21 | 1247 | 6 | 19.14 | N | 119 | 30.11 | E | AFADs steel drum | 5 fishing boat /collected sample |
| 13 | 4-Apr-15 | 21-22 | 1425 | 6 | 27.59 | N | 119 | 39.89 | E | AFADs steel drum | colour: white |
| 14 | 4-Apr-15 | 21-22 | 1445 | 6 | 31.457 | N | 119 | 42.08 | E | AFADs steel drum | colour: Red |
| 15 | 4-Apr-15 | 21-22 | 1500 | 6 | 30.00 | N | 119 | 45.43 | E | AFADs steel drum | colour: white |
| 16 | 4-Apr-15 | 21-22 | 1630 | 6 | 37.19 | N | 119 | 59.44 | E | AFADs steel drum | colour: white |
| 17 | 4-Apr-15 | 21-22 | 1645 | 6 | 42.50 | N | 120 | 2.72 | E | AFADs steel drum | colour: white |
| 18 | 4-Apr-15 | 22 | 1710 | 6 | 45.49 | N | 120 | 5.62 | E | AFADs steel drum | colour: white |
| Leg 2 | | | | | | | | | | | |
| 19 | 8-Apr-15 | to St.24 | 0915 | 6 | 49.35 | N | 122 | 18.82 | E | AFADs /bamboo | |
| 20 | 8-Apr-15 | 24 | 1050 | 6 | 50.06 | N | 121 | 28.24 | E | AFADs /bamboo | |
| 21 | 8-Apr-15 | 24 | 1053 | 6 | 50.04 | N | 121 | 29.13 | E | AFADs /bamboo | |
| 22 | 8-Apr-15 | 24 | 1056 | 6 | 50.04 | N | 122 | 29.59 | E | AFADs /bamboo | |
| 23 | 8-Apr-15 | 24 | 1058 | 6 | 50.04 | N | 122 | 29.93 | E | AFADs /bamboo | |
| 24 | 8-Apr-15 | 24-25 | 1257 | 6 | 52.95 | N | 122 | 31.48 | E | AFADs /bamboo | |
| 25 | 8-Apr-15 | 24-25 | 1317 | 6 | 52.02 | N | 122 | 34.93 | E | AFADs /bamboo | |
| 26 | 8-Apr-15 | 24-25 | 1329 | 6 | 50.01 | N | 122 | 34.689 | E | AFADs /bamboo | |
| 27 | 8-Apr-15 | 24-25 | 1341 | 6 | 49.55 | N | 122 | 37.73 | E | AFADs steel drum | |
| 28 | 8-Apr-15 | 24-25 | 1345 | 6 | 52.04 | N | 122 | 37.14 | E | AFADs steel drum | |
| 29 | 8-Apr-15 | 24-25 | 1430 | 6 | 46.00 | N | 122 | 43.0 | E | AFADs steel drum | |
| 30 | 8-Apr-15 | 24-25 | 1440 | 6 | 46.00 | N | 122 | 45.0 | E | AFADs steel drum | |
| 31 | 8-Apr-15 | 24-25 | 1450 | 6 | 51.00 | N | 122 | 58.0 | E | AFADs steel drum | colour: white |
| 32 | 9-Apr-15 | 27-28 | 0550 | 6 | 15.34 | N | 123 | 45.51 | E | AFADs steel drum | colour: white |
| 33 | 9-Apr-15 | 27-28 | 0755 | 6 | 14.99 | N | 123 | 22.68 | E | AFADs steel drum | |
| 34 | 9-Apr-15 | 27-28 | 0806 | 6 | 14.99 | N | 123 | 21.40 | E | AFADs steel drum | with fishing boat |
| 35 | 9-Apr-15 | 27-28 | 0904 | 6 | 14.93 | N | 123 | 11.25 | E | AFADs steel drum | with fishing boat |
| 36 | 9-Apr-15 | 27-28 | 0905 | 6 | 14.93 | N | 123 | 11.14 | E | AFADs steel drum | with fishing boat |
| 37* | 9-Apr-15 | 27-28 | 0946 | 6 | 15.14 | N | 123 | 1.89 | E | AFADs steel drum | with fishing boat/collected sample |
| 38 | 9-Apr-15 | 28-30 | 1355 | 6 | 1.40 | N | 122 | 58.94 | E | AFADs steel drum | with fishing boat /colour: orange |
| 39 | 9-Apr-15 | 28-30 | 1358 | 6 | 0.45 | N | 122 | 58.95 | E | AFADs steel drum | with fishing boat /colour: orange |
| 40 | 9-Apr-15 | 28-30 | 1730 | 5 | 42.32 | N | 122 | 59.76 | E | AFADs steel drum | colour: white |
| 41 | 10-Apr-15 | 31-32 | 1059 | 5 | 45.72 | N | 124 | 7.75 | E | AFADs steel drum | colour: white |
| 42 | 10-Apr-15 | 31-32 | 1120 | 5 | 42.73 | N | 124 | 9.54 | E | AFADs steel drum | with fishing boat /colour:white |
| 43 | 10-Apr-15 | 31-32 | 1138 | 5 | 42.20 | N | 124 | 15.38 | E | AFADs steel drum | with fishing boat /colour:white |
| 44 | 10-Apr-15 | 31-32 | 1147 | 5 | 43.18 | N | 124 | 14.92 | E | AFADs steel drum | with PSfishing boat /colour:orange |
| 45 | 10-Apr-15 | 31-32 | 1209 | 5 | 38.75 | N | 124 | 19.23 | E | AFADs steel drum | with PSfishing boat /colour:orange |
| 46 | 10-Apr-15 | 31-32 | 1211 | 5 | 37.96 | N | 124 | 20.05 | E | AFADs steel drum | with PSfishing boat /colour:orange |
| 47 | 10-Apr-15 | 31-32 | 1218 | 5 | 38.57 | N | 124 | 20.21 | E | AFADs steel drum | with 3 fishing boat /colour:orange |
| 48 | 10-Apr-15 | 31-32 | 1219 | 5 | 39.34 | N | 124 | 21.89 | E | AFADs steel drum | with 1 fishing boat /colour:orange |
| 49 | 10-Apr-15 | 31-32 | 1226 | 5 | 41.62 | N | 124 | 24.10 | E | AFADs steel drum | with 2 fishing boat /colour:orange |

| No. | Date | Station | Time | Location | | | | | Type of FADs | Remark | |
|-----|-----------|---------|------|----------|--------|---|-----|-------|--------------|------------------|-------------------------------------|
| | | | | Lat | Long | | | | | | |
| 50 | 10-Apr-15 | 31-32 | 1247 | 5 | 39.08 | N | 124 | 24.83 | E | AFADs steel drum | colour: white |
| 51 | 10-Apr-15 | 31-32 | 1259 | 5 | 38.37 | N | 124 | 28.09 | E | AFADs steel drum | colour: white |
| 52 | 10-Apr-15 | 31-32 | 1300 | 5 | 37.56 | N | 124 | 27.47 | E | AFADs steel drum | colour: white |
| 53 | 10-Apr-15 | 31-32 | 1302 | 5 | 39.54 | N | 124 | 29.66 | E | AFADs steel drum | colour: white |
| 54 | 10-Apr-15 | 31-32 | 1314 | 5 | 35.36 | N | 124 | 29.96 | E | AFADs steel drum | with 4 fishing boat /colour:white |
| 55 | 10-Apr-15 | 31-32 | 1318 | 5 | 35.70 | N | 124 | 30.64 | E | AFADs steel drum | with 2 fishing boat /colour:white |
| 56 | 10-Apr-15 | 31-32 | 1320 | 5 | 38.47 | N | 124 | 31.00 | E | AFADs steel drum | with 2 fishing boat /colour:white |
| 57 | 10-Apr-15 | 31-32 | 1321 | 5 | 38.81 | N | 124 | 33.13 | E | AFADs steel drum | colour:white |
| 58 | 10-Apr-15 | 31-32 | 1343 | 5 | 36.15 | N | 124 | 35.58 | E | AFADs steel drum | with 2 fishing boat /colour:white |
| 59 | 10-Apr-15 | 31-32 | 1602 | 5 | 40.35 | N | 124 | 33.04 | E | AFADs steel drum | with 2 fishing boat /colour:white |
| 60 | 10-Apr-15 | 31-32 | 1604 | 5 | 41.71 | N | 124 | 34.86 | E | AFADs steel drum | with 1 fishing boat /colour:white |
| 61* | 10-Apr-15 | 31-32 | 1608 | 5 | 40.57 | N | 124 | 33.93 | E | AFADs/Stylefoam | with PS fishing boat /collect SP. |
| 62 | 10-Apr-15 | 31-32 | 1642 | 5 | 38.70 | N | 124 | 33.29 | E | AFADs steel drum | with 1 fishing boat /colour:white |
| 63 | 10-Apr-15 | 31-32 | 1655 | 5 | 37.28 | N | 124 | 36.82 | E | AFADs steel drum | with 1 fishing boat /colour:white |
| 64 | 10-Apr-15 | 31-32 | 1657 | 5 | 36.84 | N | 124 | 35.95 | E | AFADs steel drum | Rusty /colour:orange |
| 65 | 10-Apr-15 | 31-32 | 1710 | 5 | 35.21 | N | 124 | 33.59 | E | AFADs steel drum | Rusty /colour:orange |
| 66 | 10-Apr-15 | 31-32 | 1714 | 5 | 33.87 | N | 124 | 32.57 | E | AFADs steel drum | Rusty /colour:orange |
| 67 | 10-Apr-15 | 31-32 | 1722 | 5 | 32.73 | N | 124 | 31.24 | E | AFADs steel drum | with 3 fishing boat /colour:orange |
| 68 | 10-Apr-15 | 31-32 | 1730 | 5 | 33.38 | N | 124 | 29.58 | E | AFADs steel drum | with 3 fishing boat /colour:orange |
| 69 | 10-Apr-15 | 31-32 | 1734 | 5 | 31.50 | N | 124 | 29.64 | E | AFADs steel drum | with 5 fishing boat /colour:orange |
| 70 | 11-Apr-15 | 34-35 | 0855 | 4 | 59.90 | N | 122 | 49.93 | E | AFADs steel drum | colour:orange |
| 71 | 11-Apr-15 | 34-35 | 0958 | 5 | 2.91 | N | 122 | 38.26 | E | AFADs steel drum | colour: white |
| 72 | 11-Apr-15 | 34-35 | 1100 | 5 | 0.44 | N | 122 | 26.95 | E | AFADs steel drum | colour:orange |
| 73 | 11-Apr-15 | 34-35 | 1118 | 4 | 58.79 | N | 122 | 24.13 | E | AFADs steel drum | colour:orange |
| 74 | 11-Apr-15 | 34-35 | 1124 | 5 | 00.05 | N | 122 | 23.51 | E | AFADs steel drum | Rusty /colour:white |
| 75 | 11-Apr-15 | 34-35 | 1154 | 5 | 01.66 | N | 122 | 17.40 | E | AFADs steel drum | colour:orange |
| 76 | 11-Apr-15 | 34-35 | 1157 | 4 | 58.26 | N | 122 | 17.58 | E | AFADs steel drum | colour:orange |
| 77 | 11-Apr-15 | 34-35 | 1236 | 5 | 01.78 | N | 122 | 8.45 | E | AFADs steel drum | Rusty /colour:white |
| 78 | 11-Apr-15 | 34-35 | 1300 | 5 | 00.00 | N | 122 | 6.57 | E | AFADs steel drum | colour:orange |
| 79 | 11-Apr-15 | 35-39 | 1549 | 5 | 05.46 | N | 122 | 00.29 | E | AFADs steel drum | colour:orange |
| 80 | 11-Apr-15 | 35-39 | 1616 | 5 | 08.48 | N | 122 | 00.41 | E | AFADs steel drum | with 1 fishing boat /colour: orange |
| 81 | 11-Apr-15 | 35-39 | 1622 | 5 | 10.59 | N | 121 | 59.05 | E | AFADs steel drum | 2 FADs |
| 82 | 11-Apr-15 | 35-39 | 1718 | 5 | 19.34 | N | 122 | 2.26 | E | AFADs steel drum | colour: white |
| 83 | 11-Apr-15 | 35-39 | 1749 | 5 | 28.66 | N | 122 | 1.48 | E | AFADs steel drum | colour: white |
| 84 | 12-Apr-15 | 36-37 | 0632 | 5 | 14.22 | N | 121 | 18.06 | E | AFADs /bamboo | |
| 85 | 12-Apr-15 | 36-37 | 0730 | 5 | 8.97 | N | 121 | 10.29 | E | AFADs steel drum | colour: white |
| 86 | 12-Apr-15 | 36-37 | 0825 | 5 | 4.13 | N | 121 | 5.06 | E | AFADs steel drum | colour: white |
| 87 | 12-Apr-15 | 37-38 | 1129 | 4 | 57.40 | N | 121 | 4.015 | E | AFADs steel drum | colour: white |
| 88 | 12-Apr-15 | 37-38 | 1136 | 4 | 58.34 | N | 121 | 5.69 | E | AFADs steel drum | colour: white |
| 89 | 12-Apr-15 | 37-38 | 1137 | 4 | 56.70 | N | 121 | 7.12 | E | AFADs steel drum | with 2 fishing boat /colour:white |
| 90 | 12-Apr-15 | 37-38 | 1207 | 4 | 53.85 | N | 121 | 10.87 | E | AFADs steel drum | colour: white |
| 91 | 12-Apr-15 | 37-38 | 1224 | 4 | 54.51 | N | 121 | 17.88 | E | AFADs steel drum | colour: white |
| 92 | 12-Apr-15 | 37-38 | 1228 | 4 | 50.91 | N | 121 | 15.06 | E | AFADs steel drum | colour: white |
| 93 | 12-Apr-15 | 37-38 | 1234 | 4 | 54.49 | N | 121 | 17.91 | E | AFADs steel drum | with 1 fishing boat /colour:white |
| 94 | 12-Apr-15 | 37-38 | 1235 | 4 | 51.82 | N | 121 | 15.05 | E | AFADs steel drum | colour: white |
| 95 | 12-Apr-15 | 37-38 | 1239 | 4 | 52.46 | N | 121 | 18.76 | E | AFADs steel drum | colour: white |
| 96 | 12-Apr-15 | 37-38 | 1240 | 4 | 49.68 | N | 121 | 18.29 | E | AFADs steel drum | colour: white |
| 97 | 12-Apr-15 | 37-38 | 1243 | 4 | 49.53 | N | 121 | 18.79 | E | AFADs steel drum | with 3 fishing boat /colour:white |
| 98 | 12-Apr-15 | 37-38 | 1245 | 4 | 52.66 | N | 121 | 20.05 | E | AFADs steel drum | with 2 fishing boat /colour:white |
| 99 | 12-Apr-15 | 37-38 | 1251 | 4 | 50.102 | N | 121 | 20.31 | E | AFADs steel drum | with 1 fishing boat /colour:white |

| No. | Date | Station | Time | Location | | | | | Type of FADs | Remark | |
|------|-----------|---------|------|----------|-------|------|-----|-------|--------------|------------------|---------------------------------------|
| | | | | Lat | | Long | | | | | |
| 100 | 12-Apr-15 | 37-38 | 1301 | 4 | 50.22 | N | 121 | 22.87 | E | AFADs steel drum | with 1 fishing boat /colour:white |
| 101 | 12-Apr-15 | 37-38 | 1304 | 4 | 48.60 | N | 121 | 21.37 | E | AFADs steel drum | 2 FADs with 1 fishing boat /:white |
| 102 | 12-Apr-15 | 37-38 | 1315 | 4 | 51.85 | N | 121 | 23.11 | E | AFADs steel drum | with 1 fishing boat /colour:white |
| 103 | 12-Apr-15 | 37-38 | 1324 | 4 | 50.46 | N | 121 | 26.05 | E | AFADs steel drum | with 1 fishing boat /colour:white |
| 104 | 12-Apr-15 | 37-38 | 1328 | 4 | 46.82 | N | 121 | 24.78 | E | AFADs steel drum | with 1 fishing boat /colour:white |
| 105 | 12-Apr-15 | 37-38 | 1334 | 4 | 47.66 | N | 121 | 26.55 | E | AFADs steel drum | with 1 fishing boat /colour:white |
| 106 | 12-Apr-15 | 37-38 | 1406 | 4 | 47.82 | N | 121 | 32.68 | E | AFADs steel drum | with 1 fishing boat /colour:white |
| 107 | 12-Apr-15 | 37-38 | 1420 | 4 | 44.83 | N | 121 | 34.14 | E | AFADs steel drum | with 1+6 fishing boat /colour:white |
| 108 | 12-Apr-15 | 37-38 | 1443 | 4 | 42.46 | N | 121 | 36.03 | E | AFADs steel drum | colour: white / black |
| 109 | 12-Apr-15 | 37-38 | 1500 | 4 | 42.15 | N | 121 | 40.21 | E | AFADs steel drum | with 1 fishing boat /colour: orange |
| 110* | 12-Apr-15 | 37-38 | 1508 | 4 | 40.88 | N | 121 | 40.15 | E | AFADs steel drum | 1+6 fishing boat/orange*/collected SP |
| 111 | 12-Apr-15 | 37-38 | 1547 | 4 | 42.64 | N | 121 | 44.91 | E | AFADs steel drum | with 1 fishing boat /:white/green |
| 112 | 12-Apr-15 | 37-38 | 1551 | 4 | 36.49 | N | 121 | 43.35 | E | AFADs steel drum | with 1 fishing boat /:white/green |
| 113 | 12-Apr-15 | 37-38 | 1601 | 4 | 38.34 | N | 121 | 46.02 | E | AFADs steel drum | :white/green |
| 114 | 12-Apr-15 | 37-38 | 1615 | 4 | 35.16 | N | 121 | 47.57 | E | AFADs steel drum | with 1 fishing boat /:white/green |
| 115 | 12-Apr-15 | 37-38 | 1634 | 4 | 36.66 | N | 121 | 52.57 | E | AFADs steel drum | :white/green |
| 116 | 12-Apr-15 | 37-38 | 1653 | 4 | 32.36 | N | 121 | 59.81 | E | AFADs steel drum | PS fishing boat /colour: orange |
| 117 | 12-Apr-15 | 37-38 | 1701 | 4 | 34.63 | N | 121 | 55.63 | E | AFADs steel drum | :white/blue |
| 118 | 12-Apr-15 | 37-38 | 1703 | 4 | 32.25 | N | 121 | 54.43 | E | AFADs steel drum | :white/blue |
| 119 | 12-Apr-15 | 37-38 | 1705 | 4 | 31.69 | N | 121 | 52.69 | E | AFADs steel drum | :white/blue |
| 120 | 13-Apr-15 | 37 | 1205 | 3 | 57.34 | N | 122 | 56.04 | E | AFADs steel drum | :white/orange |
| 121 | 13-Apr-15 | 38-39 | 1404 | 3 | 59.99 | N | 122 | 2.89 | E | AFADs steel drum | :white/green |
| 122 | 13-Apr-15 | 38-39 | 1619 | 3 | 59.24 | N | 122 | 34.14 | E | AFADs steel drum | :white/green |
| 123 | 13-Apr-15 | 38-39 | 1648 | 3 | 55.96 | N | 122 | 27.00 | E | AFADs steel drum | :white/green |
| 124 | 13-Apr-15 | 38-39 | 1704 | 3 | 00.06 | N | 122 | 28.52 | E | AFADs steel drum | with 5 fishing boat /:white/green |
| 125 | 13-Apr-15 | 38-39 | 1705 | 3 | 00.04 | N | 122 | 28.28 | E | AFADs steel drum | with 6 fishing boat /:white/green |
| 126 | 13-Apr-15 | 38-39 | 1736 | 3 | 00.72 | N | 122 | 22.35 | E | AFADs steel drum | colour: white |
| 127 | 13-Apr-15 | 38-39 | 1737 | 3 | 00.90 | N | 122 | 21.34 | E | AFADs steel drum | colour: white |
| 128 | 13-Apr-15 | 38-39 | 1750 | 3 | 00.82 | N | 122 | 20.17 | E | AFADs steel drum | Green |
| 129 | 14-Apr-15 | 40-41 | 0630 | 3 | 00.10 | N | 120 | 36.93 | E | AFADs steel drum | Orange |
| 130 | 14-Apr-15 | 41-42 | 0705 | 3 | 59.37 | N | 120 | 29.47 | E | AFADs steel drum | colour: white |
| 131 | 14-Apr-15 | 41-42 | 0706 | 3 | 59.38 | N | 120 | 29.47 | E | AFADs steel drum | colour: white |
| 132 | 14-Apr-15 | 41-42 | 0900 | 3 | 56.32 | N | 120 | 26.90 | E | AFADs steel drum | colour: white |
| 133 | 14-Apr-15 | 41-42 | 1035 | 3 | 55.57 | N | 120 | 23.60 | E | AFADs steel drum | colour: white |
| 134 | 14-Apr-15 | 41-42 | 1043 | 4 | 00.05 | N | 120 | 20.24 | E | AFADs steel drum | colour: white |
| 135 | 14-Apr-15 | 41-42 | 1044 | 4 | 00.06 | N | 120 | 20.93 | E | AFADs steel drum | colour: Red / Yellow |
| 136 | 14-Apr-15 | 41-42 | 1053 | 4 | 03.61 | N | 120 | 16.81 | E | AFADs steel drum | with 1+5fishing boat /:red/yellow |
| 137 | 14-Apr-15 | 41-42 | 1100 | 3 | 88.30 | N | 120 | 16.53 | E | AFADs steel drum | colour: Red / Yellow |
| 138 | 14-Apr-15 | 41-42 | 1110 | 3 | 58.83 | N | 120 | 15.45 | E | AFADs steel drum | with 1+5fishing boat /:red/yellow |
| 139 | 14-Apr-15 | 41-42 | 1121 | 3 | 58.42 | N | 120 | 12.96 | E | AFADs steel drum | :white/blue |
| 140 | 14-Apr-15 | 41-42 | 1124 | 4 | 00.66 | N | 120 | 12.11 | E | AFADs steel drum | :white/blue |
| 141 | 14-Apr-15 | 41-42 | 1126 | 3 | 59.07 | N | 120 | 11.63 | E | AFADs steel drum | :white/blue |
| 142 | 14-Apr-15 | 41-42 | 1135 | 3 | 58.77 | N | 120 | 09.68 | E | AFADs steel drum | :white/blue |
| 143 | 14-Apr-15 | 41-42 | 1152 | 3 | 58.27 | N | 120 | 6.18 | E | AFADs steel drum | :white/blue / 1 fishing boat |
| 144 | 14-Apr-15 | 41-42 | 1207 | 3 | 59.94 | N | 120 | 5.04 | E | AFADs steel drum | :white/orange |
| 145 | 14-Apr-15 | 41-42 | 1217 | 3 | 57.33 | N | 120 | 3.02 | E | AFADs steel drum | with 1 fishing boat /:white/oragne |
| 146 | 14-Apr-15 | 41-42 | 1219 | 3 | 59.14 | N | 120 | 1.85 | E | AFADs steel drum | :white/orange |
| 147 | 14-Apr-15 | 41-42 | 1222 | 4 | 00.67 | N | 120 | 00.93 | E | AFADs steel drum | :white/orange |
| 148 | 14-Apr-15 | 41-42 | 1237 | 3 | 58.79 | N | 119 | 57.94 | E | AFADs steel drum | :white/blue |
| 149 | 14-Apr-15 | 41-42 | 1237 | 3 | 58.77 | N | 119 | 57.94 | E | AFADs steel drum | :white/orange |

| No. | Date | Station | Time | Location | | | | | Type of FADs | Remark | |
|--------------|-----------|---------|------|----------|-------|------|-----|--------|--------------|------------------|--------------------------------------|
| | | | | Lat | | Long | | | | | |
| 150 | 14-Apr-15 | 41-42 | 1253 | 4 | 2.66 | N | 119 | 53.88 | E | AFADs steel drum | :white/blue |
| 151 | 14-Apr-15 | 41-42 | 1254 | 3 | 59.33 | N | 119 | 54.23 | E | AFADs steel drum | :white/blue |
| 152 | 14-Apr-15 | 41-42 | 1311 | 3 | 59.16 | N | 119 | 50.64 | E | AFADs steel drum | :white/blue |
| 153 | 14-Apr-15 | 41-42 | 1400 | 3 | 59.95 | N | 119 | 41.55 | E | AFADs steel drum | with 1 fishing boat /colour:orange |
| 154 | 14-Apr-15 | 41-42 | 1403 | 4 | 1.91 | N | 119 | 40.24 | E | AFADs steel drum | with 1 fishing boat /colour:orange |
| 155 | 14-Apr-15 | 41-42 | 1405 | 4 | 1.29 | N | 119 | 39.54 | E | AFADs steel drum | with 1+4 fishing boat /colour:orange |
| 156 | 22-Apr-15 | SK-BT | 0528 | 2 | 19.43 | N | 124 | 18.68 | E | AFADs /bamboo | with hut |
| 157 | 22-Apr-15 | SK-BT | 0543 | 2 | 11.11 | N | 124 | 23.81 | E | AFADs steel drum | with hut |
| 158 | 22-Apr-15 | SK-BT | 0545 | 2 | 21.27 | N | 124 | 23.44 | E | AFADs steel drum | with hut |
| 159 | 22-Apr-15 | SK-BT | 0610 | 2 | 17.37 | N | 124 | 30.61 | E | AFADs /bamboo | |
| 160 | 22-Apr-15 | SK-BT | 0618 | 2 | 12.24 | N | 124 | 29.19 | E | AFADs /bamboo | |
| 161 | 22-Apr-15 | SK-BT | 0618 | 2 | 11.44 | N | 124 | 30.77 | E | AFADs /bamboo | |
| 162 | 22-Apr-15 | SK-BT | 0622 | 2 | 14.92 | N | 124 | 32.87 | E | AFADs steel drum | with hut |
| 163 | 22-Apr-15 | SK-BT | 0715 | 2 | 10.08 | N | 124 | 38.22 | E | AFADs steel drum | with hut |
| 164 | 22-Apr-15 | SK-BT | 0716 | 2 | 9.17 | N | 124 | 38.77 | E | AFADs steel drum | with hut |
| 165 | 22-Apr-15 | SK-BT | 0728 | 2 | 9.66 | N | 124 | 37.91 | E | AFADs steel drum | with hut |
| 166 | 22-Apr-15 | SK-BT | 0734 | 2 | 12.15 | N | 124 | 42.05 | E | AFADs steel drum | with hut |
| 167 | 22-Apr-15 | SK-BT | 0747 | 2 | 5.18 | N | 124 | 40.53 | E | AFADs steel drum | with hut |
| 168 | 22-Apr-15 | SK-BT | 0748 | 2 | 7.89 | N | 124 | 42.65 | E | AFADs steel drum | with hut |
| 169 | 22-Apr-15 | SK-BT | 0753 | 2 | 7.07 | N | 124 | 41.23 | E | AFADs steel drum | colour:yellow |
| 170 | 22-Apr-15 | SK-BT | 0758 | 2 | 6.51 | N | 124 | 42.79 | E | AFADs steel drum | |
| 171 | 22-Apr-15 | SK-BT | 0806 | 2 | 5.95 | N | 124 | 45.45 | E | AFADs steel drum | with hut |
| 172 | 22-Apr-15 | SK-BT | 1437 | 1 | 45.64 | N | 125 | 8.53 | E | AFADs /bamboo | |
| 173 | 22-Apr-15 | SK-BT | 1440 | 1 | 45.73 | N | 125 | 9.62 | E | AFADs /bamboo | |
| Leg 3 | | | | | | | | | | | |
| 174 | 25-Apr-15 | BT-45 | 1500 | 2 | 24.98 | N | 125 | 0.10 | E | AFADs steel drum | with hut |
| 175 | 25-Apr-15 | BT-45 | 1505 | 2 | 25.05 | N | 125 | 2.77 | E | AFADs steel drum | |
| 176 | 25-Apr-15 | BT-45 | 1508 | 2 | 24.70 | N | 124 | 59.10 | E | AFADs steel drum | with hut |
| 177 | 25-Apr-15 | BT-45 | 1514 | 2 | 25.09 | N | 124 | 56.96 | E | AFADs steel drum | with hut |
| 178 | 25-Apr-15 | BT-45 | 1520 | 2 | 29.94 | N | 124 | 59.35 | E | AFADs steel drum | with hut |
| 179 | 25-Apr-15 | BT-45 | 1521 | 2 | 29.88 | N | 124 | 56.98 | E | AFADs steel drum | with hut |
| 180 | 25-Apr-15 | BT-45 | 1540 | 2 | 34.81 | N | 124 | 58.47 | E | AFADs steel drum | with hut |
| 181 | 25-Apr-15 | BT-45 | 1540 | 2 | 24.55 | N | 124 | 59.38 | E | AFADs /bamboo | with hut |
| 182 | 25-Apr-15 | BT-45 | 1543 | 2 | 24.70 | N | 125 | 0.51 | E | AFADs /bamboo | with hut |
| 183 | 25-Apr-15 | BT-45 | 1545 | 2 | 24.91 | N | 124 | 57.18 | E | AFADs /bamboo | with hut |
| 184 | 25-Apr-15 | 45-46 | 1753 | 2 | 34.77 | N | 124 | 59.22 | E | AFADs /bamboo | with hut |
| 185 | 26-Apr-15 | 50 | 1117 | 2 | 33.43 | N | 124 | 0.63 | E | AFADs /bamboo | with hut |
| 186 | 26-Apr-15 | 50 | 1117 | 2 | 33.67 | N | 124 | 1.97 | E | AFADs /bamboo | with hut |
| 187 | 26-Apr-15 | 50 | 1117 | 2 | 36.49 | N | 123 | 55.85 | E | AFADs /bamboo | with hut |
| 188 | 26-Apr-15 | 50 | 1117 | 2 | 34.71 | N | 123 | 59.120 | E | AFADs /bamboo | with hut |
| 189 | 26-Apr-15 | 50 | 1117 | 2 | 30.67 | N | 123 | 59.23 | E | AFADs /bamboo | with hut |
| 190 | 27-Apr-15 | 50-51 | 1154 | 2 | 30.09 | N | 123 | 58.67 | E | AFADs steel drum | with hut |
| 191 | 27-Apr-15 | 50-51 | 1220 | 2 | 30.00 | N | 123 | 57.12 | E | AFADs steel drum | |
| 192 | 27-Apr-15 | 50-51 | 1303 | 2 | 30.56 | N | 123 | 47.30 | E | AFADs steel drum | with fishinh boat |
| 193 | 27-Apr-15 | 50-51 | 1305 | 2 | 30.91 | N | 123 | 44.91 | E | AFADs steel drum | with fishinh boat |
| 194 | 27-Apr-15 | 50-51 | 1335 | 2 | 29.75 | N | 123 | 44.14 | E | AFADs steel drum | |
| 195 | 27-Apr-15 | 50-51 | 1405 | 2 | 28.18 | N | 123 | 38.25 | E | AFADs steel drum | with hut |
| 196 | 27-Apr-15 | 50-51 | 1419 | 2 | 24.44 | N | 123 | 36.29 | E | AFADs steel drum | with hut |
| 197 | 27-Apr-15 | 50-51 | 1449 | 2 | 25.70 | N | 123 | 30.31 | E | AFADs steel drum | with hut |
| 198 | 27-Apr-15 | 50-51 | 1450 | 2 | 28.74 | N | 123 | 30.44 | E | AFADs steel drum | |

| No. | Date | Station | Time | Location | | | | | Type of FADs | Remark | |
|------|-----------|---------|------|----------|-------|------|-----|-------|--------------|------------------|---|
| | | | | Lat | | Long | | | | | |
| 199 | 27-Apr-15 | 50-51 | 1453 | 2 | 31.71 | N | 123 | 29.31 | E | AFADs steel drum | with hut |
| 200 | 27-Apr-15 | 50-51 | 1455 | 2 | 24.68 | N | 123 | 28.19 | E | AFADs steel drum | with hut and fishing boat |
| 201 | 27-Apr-15 | 50-51 | 1517 | 2 | 28.42 | N | 123 | 25.94 | E | AFADs steel drum | with hut |
| 202 | 27-Apr-15 | 50-51 | 1533 | 2 | 25.13 | N | 123 | 22.25 | E | AFADs steel drum | with hut |
| 203 | 27-Apr-15 | 50-51 | 1548 | 2 | 29.53 | N | 123 | 21.48 | E | AFADs steel drum | |
| 204 | 27-Apr-15 | 50-51 | 1426 | 2 | 31.92 | N | 123 | 13.70 | E | AFADs steel drum | with hut and fishing boat |
| 205 | 27-Apr-15 | 50-51 | 1711 | 2 | 31.70 | N | 123 | 5.88 | E | AFADs steel drum | with hut |
| 206 | 28-Apr-15 | | 1306 | 2 | 33.59 | N | 120 | 40.43 | E | AFADs steel drum | |
| 207* | 30-Apr-15 | 58 | 0645 | 1 | 28.96 | N | 121 | 31.40 | E | AFADs steel drum | Hydro acoustic survey, colour:orange, f |
| 208 | 30-Apr-15 | 58 | 0648 | 1 | 32.05 | N | 121 | 31.05 | E | AFADs steel drum | |
| 209 | 30-Apr-15 | 58 | 1136 | 1 | 29.99 | N | 121 | 40.30 | E | AFADs steel drum | colour:white |
| 210 | 30-Apr-15 | 58 | 1221 | 1 | 27.25 | N | 121 | 49.79 | E | AFADs steel drum | with hut |
| 211 | 30-Apr-15 | 58-59 | 1452 | 1 | 27.32 | N | 122 | 21.81 | E | AFADs steel drum | with fishing boat |
| 212 | 30-Apr-15 | 58-59 | 1454 | 1 | 29.04 | N | 122 | 21.87 | E | AFADs steel drum | colour:white |
| 213 | 30-Apr-15 | 58-59 | 1504 | 1 | 29.55 | N | 122 | 23.77 | E | AFADs steel drum | Hydro acoustic survey, with fishing bo |
| 214 | 1-May-15 | 60-61 | 0535 | 1 | 29.66 | N | 124 | 11.32 | E | AFADs steel drum | colour:white red |
| 215 | 1-May-15 | 60-61 | 0615 | 1 | 30.27 | N | 124 | 18.68 | E | AFADs steel drum | colour:white brown |
| 216 | 1-May-15 | 60-61 | 0618 | 1 | 30.37 | N | 124 | 19.61 | E | AFADs steel drum | colour:white brown |
| 217 | 1-May-15 | 60-61 | 0624 | 1 | 28.98 | N | 124 | 21.27 | E | AFADs steel drum | colour:white |
| 218 | 1-May-15 | 60-61 | 0627 | 1 | 30.83 | N | 124 | 22.58 | E | AFADs steel drum | |
| 219 | 1-May-15 | 60-61 | 0631 | 1 | 28.31 | N | 124 | 22.09 | E | AFADs styrofoam | |
| 220 | 1-May-15 | 60-61 | 0633 | 1 | 31.89 | N | 124 | 23.26 | E | AFADs steel drum | |
| 221 | 1-May-15 | 60-61 | 0635 | 1 | 30.33 | N | 124 | 23.33 | E | AFADs steel drum | |
| 222 | 1-May-15 | 60-61 | 0645 | 1 | 30.28 | N | 124 | 26.46 | E | AFADs steel drum | |
| 223 | 1-May-15 | 60-61 | 0650 | 1 | 28.23 | N | 124 | 24.90 | E | AFADs styrofoam | |

SEAFDEC Addresses

Secretariat

P.O. Box 1046
Kasetsart Post Office, Chatuchak
Bangkok 10903, Thailand
Tel: +66 2940 6326
Fax: +66 2940 6336
E-mail: secretariat@seafdec.org
<http://www.seafdec.org>

Training Department (TD)

P.O. Box 97 Phrasamutchedi,
Samut Prakan 10209, Thailand
Tel: +66 2425 6100
Fax: +66 2425 6110 to 11
E-mail: td@seafdec.org
<http://www.seafdec.or.th>

Marine Fisheries Research Department (MFRD)

2 Perahu Road,
Off Lim Chu Kang Road,
Singapore 718915
Tel: +65 6790 7973
Fax: +65 6861 3196
E-mail: ava_mfrd@ava.gov.sg
<http://www.seafdec.org>

Aquaculture Department (AQD)

Main Office: Tigbauan,
5021 Iloilo, Philippines
Tel: +63 33 511 9171
Fax: +63 33 511 8709, 511 9170
Manila Office: Rm 102 G/F
Philippines Social Science Center (PSSC)
Commonwealth Avenue, Diliman
Quezon City 1101, Philippines
Tel & Fax: +63 2 927 7825
E-mail: aqdchief@seafdec.org.ph
<http://www.seafdec.org.ph>

Marine Fishery Resources Development and Management Department (MFRDMD)

Taman Perikanan, Chendering,
21080 Kuala Terengganu, Malaysia
Tel: +609 616 3150
Fax: +609 617 5136
E-mail: mfrdmd@seafdec.org.my
<http://www.seafdec.org.my>

Inland Fishery Resources Development and Management Department (IFRDMD)

Jl. Gub. HA. Bastari No.08
RT.29 RW.07 Kel. Silaberanti
Kec. Seberang Ulu 1, Jakabaring,
Palembang 30252,
Sumatra Selatan, Indonesia
Tel: +62 711 5649600
Fax: +62 711 5649601
<http://www.seafdec.id>



Joint Research Program on Tuna Resources
in Sulu and Sulawesi Seas